

Ratcliffe Close

Uxbridge • Middlesex • UB8 2DD
Guide Price: £670,000



coopers
est 1986

Ratcliffe Close

Uxbridge • Middlesex • UB8 2DD

Nestled in the desirable area of Ratcliffe Close, Uxbridge, this charming three bedroom detached family home offers a versatile accommodation ideal for modern family living. The property boasts a spacious open plan kitchen, living, and dining room overlooking the rear garden. The contemporary kitchen is fitted with a range of modern units, integrated appliances and a breakfast bar, while French doors provide direct access to the rear garden and allow an abundance of natural light throughout.

The first floor comprises three well proportioned bedrooms, including a spacious principal bedroom, together with a family bathroom.

Externally, the property benefits from a private rear garden with patio area, ideal for outdoor dining and summer entertaining. To the front is a driveway providing off-street parking alongside an integral garage offering further storage or potential for conversion, subject to the necessary consents.

Three bedroom detached family home

Quiet residential location

Spacious open-plan living

Kitchen with integrated appliances & breakfast bar

Reception room / Fourth bedroom

Ground floor cloakroom & family bathroom

Rear garden with patio seating area & storage shed

Driveway parking & integral garage

Highly regarded schools nearby

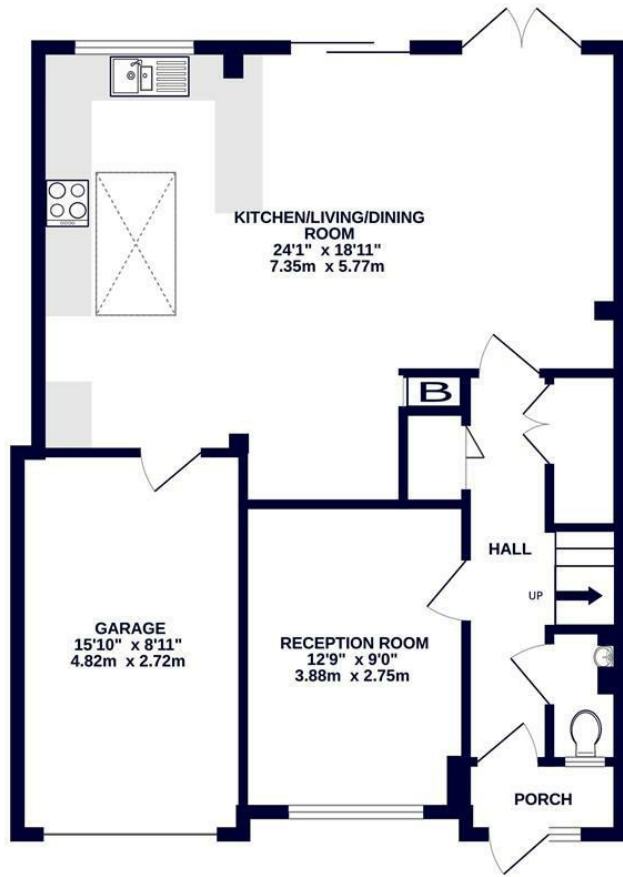
Close to convenient transport links

These particulars are intended as a guide and must not be relied upon as statements of fact. Your attention is drawn to the Important Notice on the last page.

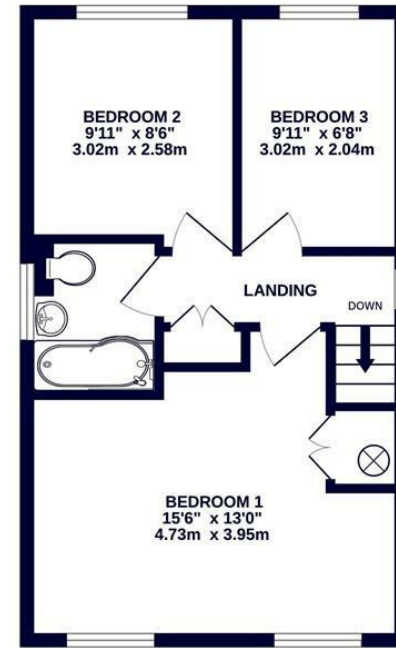




GROUND FLOOR
785 sq.ft. (73.0 sq.m.) approx.



1ST FLOOR
402 sq.ft. (37.3 sq.m.) approx.



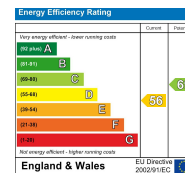
TOTAL FLOOR AREA: 1187 sq.ft. (110.3 sq.m.) approx.

Whilst every attempt has been made to ensure the accuracy of the floorplan contained here, measurements of doors, windows, rooms and any other items are approximate and no responsibility is taken for any error, omission or mis-statement. This plan is for illustrative purposes only and should be used as such by any prospective purchaser. The services, systems and appliances shown have not been tested and no guarantee as to their operability or efficiency can be given.
Made with Metropix ©2026



1 Vine Street, Uxbridge,
Middlesex, UB8 1QE
us@coopersresidential.co.uk

CoopersResidential.co.uk



Important Notice: These particulars, whilst believed to be accurate are set out as a general outline only for guidance and do not constitute any part of an offer or contract. Intending purchasers should not rely on them as statements or representation of fact, but must satisfy themselves by inspection or otherwise has the authority to make or give any representation or warranty in respect of the property.