

martin-thornton.com
01484 508000



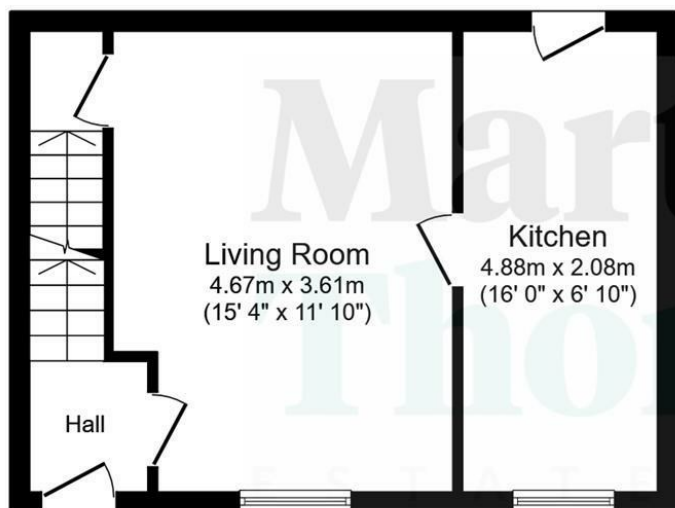
Greenwood Street, Primrose Hill Huddersfield,

**Offers in the region of
£125,000**

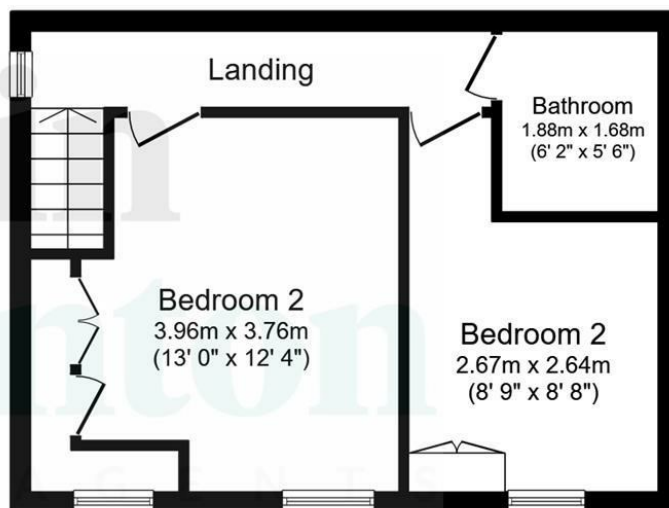
This two double bedroom terraced home is offered with the advantage of no onward chain and provides a stylish and contemporary interior. The property would make an ideal first home and is located on a no-through-road. The accommodation comprises an entrance lobby, good-sized living room with media wall, separate breakfast kitchen with built-in oven and hob. There is useful storage within the keeping cellar. On the first floor are two double bedrooms, both of which have built-in furniture, and a stylish bathroom. The property has a gas-fired central heating system and uPVC double-glazing. Externally, there is an enclosed garden area at the front with composite decking and, at the rear, use of a communal area with laundry hanging rights. Parking is informal on the road.

Greenwood Street, Primrose Hill Huddersfield,

Floorplan



Ground Floor



First Floor

Total floor area: 65.9 sq.m. (709 sq.ft.)

This floor plan is for illustrative purposes only. It is not drawn to scale. Any measurements, floor areas (including any total floor area), openings and orientations are approximate. No details are guaranteed, they cannot be relied upon for any purpose and do not form any part of any agreement. No liability is taken for any error, omission or misstatement. A party must rely upon its own inspection(s). Powered by www.Propertybox.io

Greenwood Street, Primrose Hill Huddersfield,

Details



Entrance Lobby

A composite external entrance door gives access to the entrance lobby, which has a decorative ceiling archway and a staircase rising to the first floor accommodation. The initial portion of the lobby has matting style carpeting and then a grey carpet beyond this. There is a radiator and a door leading into the living room.

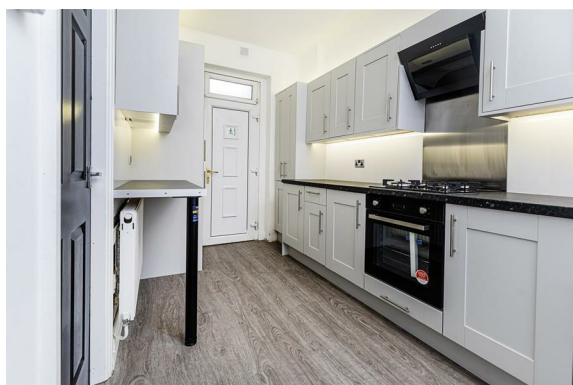
Living Room

This good-sized reception room has a media wall incorporating acoustic panelling, low-level storage cupboards and open shelving. There is plenty of space for furniture and the light and bright room has neutral decor and grey carpeting. A uPVC window overlooks the frontage and there is a radiator. A door leads into the breakfast kitchen.



Breakfast Kitchen

The stylish breakfast kitchen has an array of units to high and low levels, with worktops and a one-and-a-half bowl sink with mixer tap and single drainer. There is a breakfast bar with storage cupboards and a wine rack above, beneath which is a radiator. Integrated appliances comprise a fan oven and a four-ring gas hob with splashback and filter hood above. There is a tall housing unit for a fridge freezer, along with space and plumbing for an automatic washing machine. Concealed is the Vaillant boiler for the central heating system. The room has laminate flooring, a uPVC window to the front elevation and an external uPVC door leading out to a communal laundry hanging area.



Storage Cellar

From the living room, steps lead down to a useful storage cellar with a stone slab table and recessed shelving.

Greenwood Street, Primrose Hill Huddersfield,

Details



First Floor Landing

From the entrance lobby, the staircase rises to the first floor landing, which has a continuation of the grey carpeting and a uPVC window.



Bedroom One

This spacious double bedroom has twin uPVC windows maximising natural light. It has built-in furniture comprising a treble wardrobe, matching drawers, dressing table and further storage cupboards. There is also a radiator.



Bedroom Two

This double bedroom has built-in furniture comprising a double wardrobe and side cabinet. It has a uPVC window, neutral decor, grey carpeting and a radiator.



Greenwood Street, Primrose Hill Huddersfield,

Details



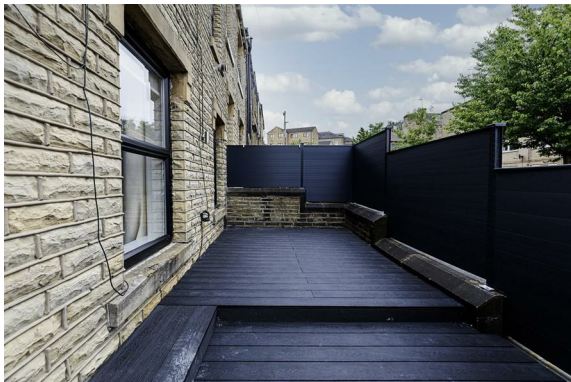
House Bathroom

The stylish bathroom has a white three-piece suite comprising a bath with a shower screen, an overhead waterfall style shower fitting and a hand-held shower attachment; a rectangular hand basin with storage beneath and a low-level WC. There is aqua panelling to the walls and ceiling, downlighting, an illuminated mirror and an upright chrome ladder style radiator.



External Details

In front of the property, there is a garden area designed for ease of maintenance and perfect for outdoor eating and entertaining. It has a stone perimeter wall with composite fencing and a matching lockable gate. There is an all-weather composite decked patio area. At the rear, there is a communal garden area with hanging rights for laundry.



Tenure

The vendor informs us that the property is freehold.

Greenwood Street, Primrose Hill Huddersfield,

Directions

