



Price
£110,000

Leasehold

2x 🏠 1x ↻ 1x 🚗

**Blackthorn Road,
Reigate, Surrey, RH2**

cubitt & west
Helping you move forwards



Main features

- Shared Ownership 40% share
£110,000/100% £275,000
- Monthly rent based on 40% share
£350 & service charge £151.42
- Spacious ground floor apartment
- Large lounge/diner & kitchen/
breakfast area, allocated parking
- Private terrace, communal gardens
- Short walk to shops & schools

Accommodation

GROUND FLOOR

Entrance Hall: 8'0 x 3'0 (2.44m x 0.92m) plus 8'0 x 4'0 (2.44m x 1.22m)

Lounge/Diner: 15'0 x 11'8 (4.58m x 3.56m)

Kitchen/Breakfast Room: 15'0 x 9'9 (4.58m x 2.97m)

Bedroom 1: 13'1 x 8'7 (3.99m x 2.62m)

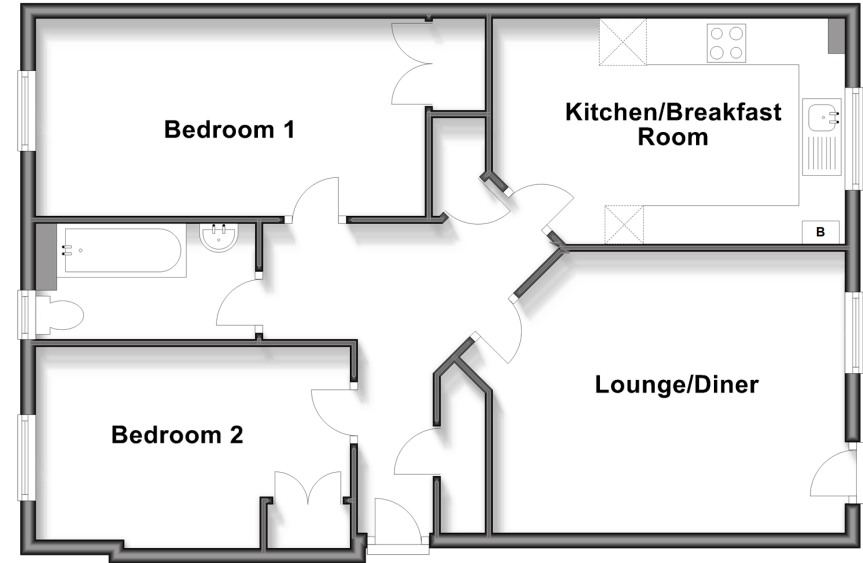
Bedroom 2: 10'8 x 8'5 (3.25m x 2.57m)

Bathroom: 8'5 x 5'0 (2.57m x 1.53m)

OUTSIDE

- Private Terrace
- Communal Gardens
- Allocated Parking

Ground Floor
Approx. 70.9 sq. metres (763.2 sq. feet)



Call Reigate - 01737 222020 ■ cubittandwest.co.uk

- Legal advice should be taken to verify fixtures/fittings, planning, alterations and/or lease details
- Appliances & services are untested, dimensions are approximate and floor plans are not to scale



21613028/20250912/NF1/JB1