



## Ericsson Close, SW18

### £450,000

Set within a quiet residential development, this well-presented one-bedroom ground floor apartment offers a bright and practical layout. The property features a fully fitted integrated kitchen with underfloor heating and breakfast bar as well as a separate lounge with French doors, a double bedroom with an inbuilt double wardrobe and a newly renovated bathroom. The flat further benefit's from two off street parking spaces.

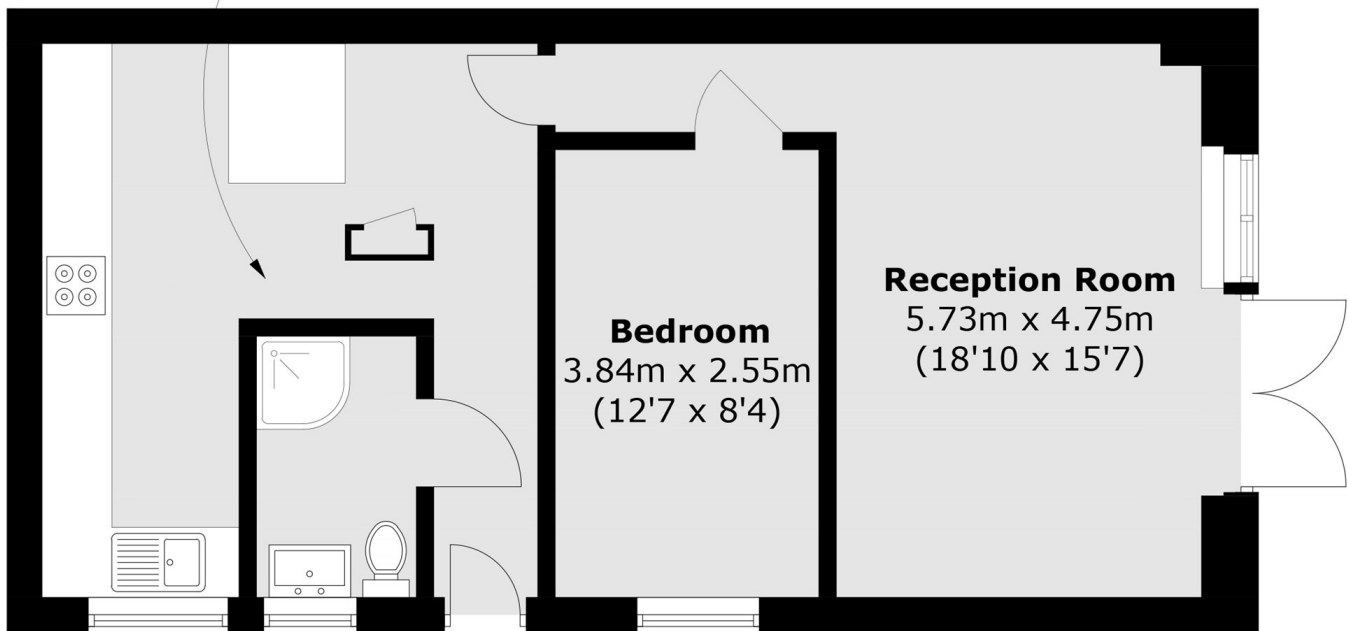
Ericsson Close is conveniently located for the amenities of Wandsworth, with a variety of shops, cafés and restaurants nearby. Excellent transport links include Wandsworth Town station (National Rail) and East Putney Underground station (District Line), offering easy access into Central London.

### Features

- 519.9 sq. ft
- Chain Free
- Large private garden
- Two parking spaces
- Own Front Door
- Large kitchen with breakfast bar and underfloor heating

# Ericsson Close, London, SW18

**Kitchen /  
Dining Room**  
4.75m x 4.38m  
(15'7 x 14'4)



Total area (approx.): 48.3 sq. m (519.9 sq. ft)