



COBBLESTONE SQUARE, E1W

£2,250 per week (pcm)

Furnished one double bedroom apartment with private balcony and dock & City views. Features a sleek fully integrated kitchen (incl. Wine cooler), wood flooring, excellent storage, and a modern bathroom.

- Available 28th May
- Fully Furnished
- Private Balcony
- Gym, Hydro pool and Sauna

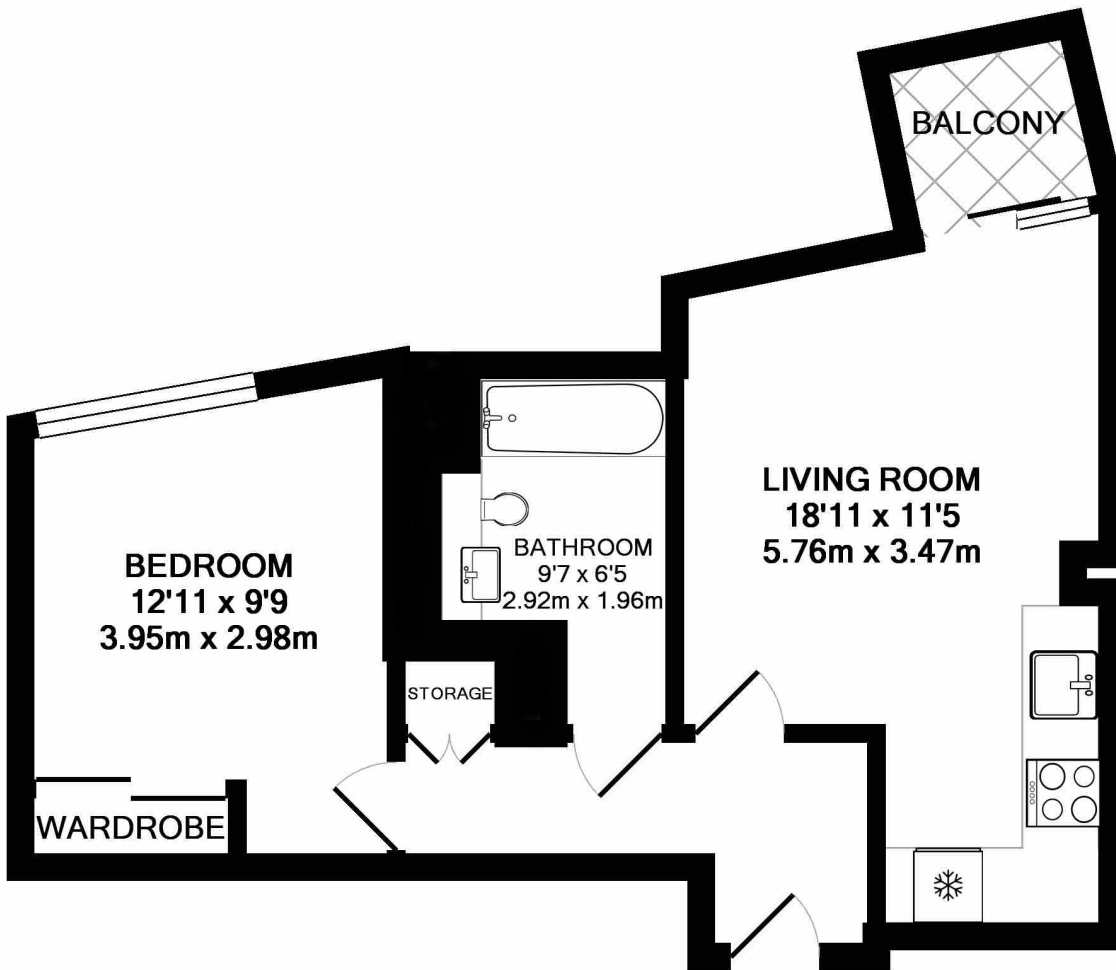


ABOUT THE HOME

Set in a premium development just 0.2 miles from Wapping Station, with 24hr concierge, gym, spa & hydro pool.







TOTAL APPROX. FLOOR AREA 408 SQ.FT. (37.9 SQ.M.)

Whilst every attempt has been made to ensure the accuracy of the floor plan contained here, measurements of doors, windows, rooms and any other items are approximate and no responsibility is taken for any error, omission, or mis-statement. This plan is for illustrative purposes only and should be used as such by any prospective purchaser. The services, systems and appliances shown have not been tested and no guarantee as to their operability or efficiency can be given

Made with Metropix ©2018



LiFE RESIDENTIAL

71 Drayton Park, London, N5

1BF

Sales: 020 3838 8666

Lettings: 020 7359 4488

Energy Rating: B. We aim to make our particulars both accurate and reliable. However they are not guaranteed; nor do they form part of an offer or contract. If you require clarification on any points then please contact us, especially if you're traveling some distance to view. Please note that appliances and heating systems have not been tested and therefore no warranties can be given as to their good working order.