

Fleetwood Road, KT1

£240,000

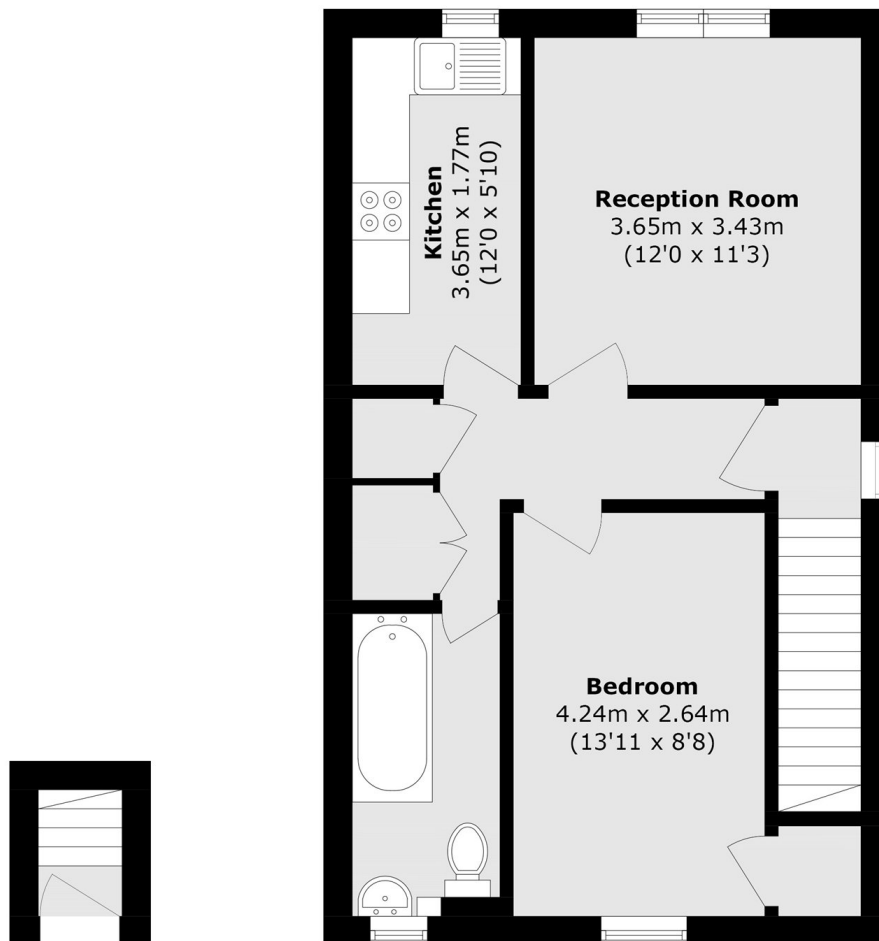
A unique opportunity to purchase a first floor maisonette, the property offers plenty of space and light throughout in the heart of Norbiton. It has use of a private garden, a fully boarded loft and is being sold chain free.

Fleetwood Road is ideally positioned close to Norbiton Station and central Kingston is close-by as well. There are plenty of local routes into the city including buses and trains.

Features

- Maisonette
- One Double Bedroom
- First Floor
- Use Of a Private Garden
- Great Location
- Chain Free

Fleetwood Road, Kingston Upon Thames, KT1



Ground Floor

First Floor

Total area (approx.): 50.4 sq. m (542.5 sq. ft)