



 4  2  2
South Road, Sully Penarth
£625,000

 peter
alan

02920 703799
penarth@peteralan.co.uk



About the property

This four bedroom semi-detached property is located on the desirable South Road in Sully, with ample living space and potential. Benefiting from traditional features such as parquet flooring and stained glass windows. Briefly comprising of an entrance porch, spacious hallway, lounge, additional reception room, dining room, kitchen, conservatory, utility room, spacious landing, four double bedrooms, two en-suites, family bathroom, enclosed rear garden with mature shrubs and trees, outbuildings such as potting shed, workshop area, log store, garage, parking to front for multiple vehicles.

Situated in the Vale of Glamorgan, Sully offers the best of both worlds - peaceful solace in a rural location and excellent transport links. With the beach nearby, you can take a relaxing stroll by the open waters before settling down at the local pub. With Sully Primary school just under a mile away, you can walk the children to school. The nearby train station makes it a perfect location for commuters, with times of just 20 minutes into Cardiff. The M4 is also just 9 miles away and offers easy access to Cardiff and beyond.

Accommodation

Entrance Hall

Stained glass, parquet flooring, under stairs storage.

Cloakroom

W.C, sink, tiled

Lounge

16' 2" Max x 15' 6" (4.93m Max x 4.72m)
Window to front, carpet, log burner, picture rail.

Dining Room

13' 9" x 12' 10" (4.19m x 3.91m)
Window to front, parquet, alcoves with storage.

Reception Room

17' x 13' 9" (5.18m x 4.19m)
Patio doors to rear, picture rail, open fireplace.

Kitchen

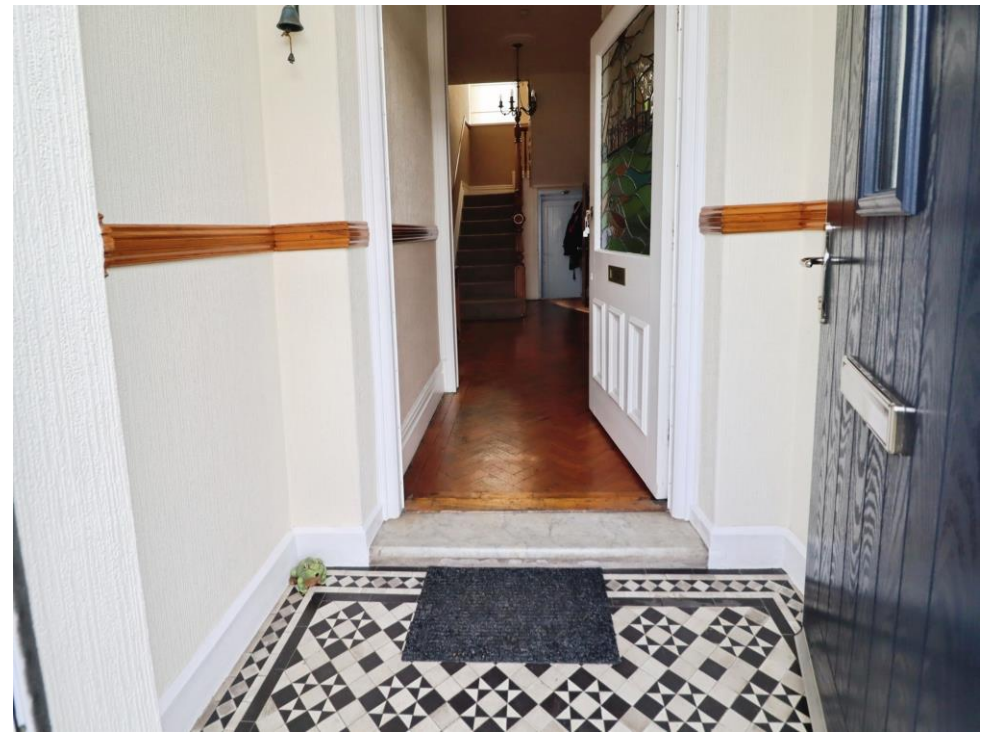
14' 4" x 13' 10" (4.37m x 4.22m)
Tiled, fridge, dishwasher, range cooker.

Utility Room

10' 7" x 7' (3.23m x 2.13m)
Tiled floor, space for appliances.

Sun Room

13' 3" x 8' 7" (4.04m x 2.62m)





Bedroom One

16' 1" x 15' 5" (4.90m x 4.70m)

Carpet, window seat with storage, fitted wardrobes, bay window with sea view.

En Suite

Sink, shower, towel radiator.

Bedroom Two

12' 4" x 11' 9" (3.76m x 3.58m)

Fitted storage, sea view.

Bedroom Three

12' 4" x 11' 9" (3.76m x 3.58m)

Baxi boiler, carpet, fitted storage, sash windows.

Bedroom Four

12' 2" x 8' 6" (3.71m x 2.59m)

Carper, window to rear.

En Suite

Laminate, w.c, sink, double shower.

Bathroom



W.C, sink, roll top bath, tiled walls, towel radiator, stained glass.

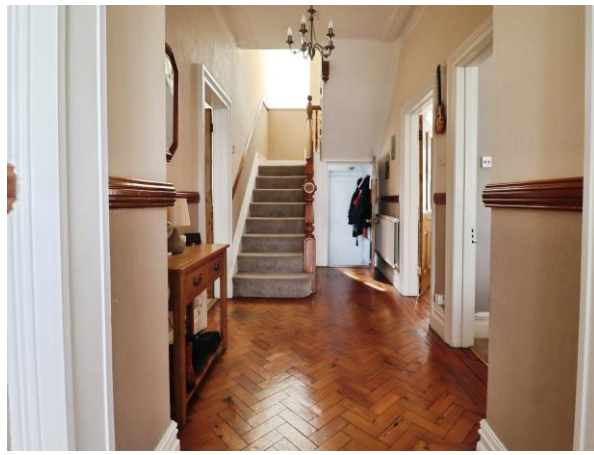
Loft Space

Pull down ladder, boarded, insulated, lighting.

Rear Garden

Patio, tree, lawn, pottering shed, log shed, garage.





02920 703799

penarth@peteralan.co.uk



Total floor area 186.8 m² (2,011 sq.ft.) approx

This floor plan is for illustrative purposes only. It is not drawn to scale. Any measurements, floor areas (including any total floor area), openings and orientation are approximate. No details are guaranteed, they cannot be relied upon for any purpose and they do not form part of any agreement. No liability is taken for any error, omission or misstatement. A party must rely upon its own inspection(s). Powered by www.propertybox.io



Important Information

Note while we endeavour to make our sales details accurate and reliable, if there is any point which is of particular interest to you, please contact the office and we will be pleased to confirm the position for you. We have not personally tested any apparatus, equipment, fixtures, fittings or services and cannot verify they are in working order or fit for their purposes. Nothing in these particulars is intended to indicate that carpets or curtains, furnishings or fittings, electrical goods (whether wired or not), Gas fires or light fittings or any other fixtures not expressly included form part of the property offered for sale. This computer generated Floorplan, if applicable, is intended as a general guide to the layout and design of the property. It is not to scale and should not be relied upon for dimensions. Tenure: We cannot confirm the tenure of the property as we have not had access to the legal documents. The buyer is advised to obtain verification from their solicitor or surveyor.

Peter Alan Limited is registered in England and Wales under company number 2073153, Registered Office is Cumbria House, 16-20 Hockliffe Street, Leighton Buzzard, Bedfordshire, LU7 1GN. VAT Registration Number is 500 2481 05. For activities relating to regulated mortgages and non-investment insurance contracts, Peter Alan Limited is an appointed representative of Connells Limited which is authorised and regulated by the Financial Conduct Authority. Connells Limited's Financial Services Register number is 302221. Most buy-to-let mortgages are not regulated.

