

New Station Road

FISHPONDS

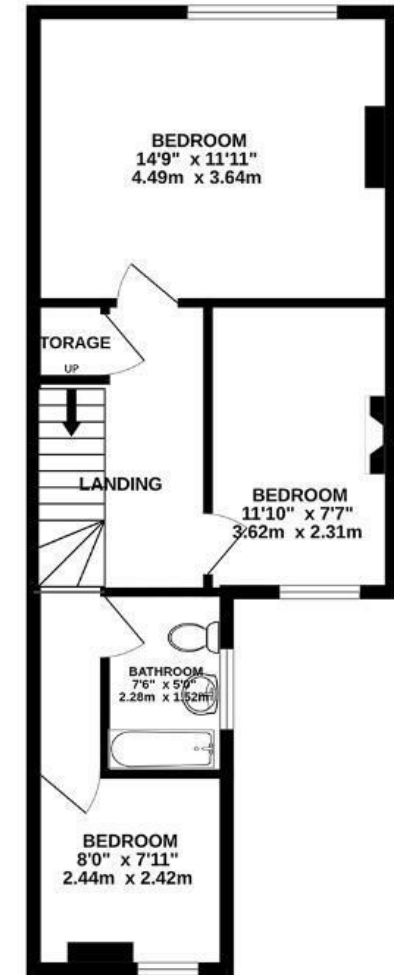
APPROXIMATE FLOOR AREA
86.6 SQM / 932 SQFT



GROUND FLOOR



FIRST FLOOR



Boardwalk

New Station , BRISTOL

£
£360,000

zzz
3 Bedrooms

📍
BS16 3RS

🦆
1 Bathrooms

"We have loved living here as both a couple and a young family. We have enjoyed taking our daughter to the nearby parks and the incredible riverside walk as well as cycle rides on the Bristol to Bath Railway path – all just minutes away. We have spent many wonderful afternoons and evenings in the garden, having BBQs and entertaining friends. We have enjoyed many great conversations with neighbours, even sharing yoga classes in the garden during lockdown! Many wonderful memories."

