



Conington Road, SE13

£325,000

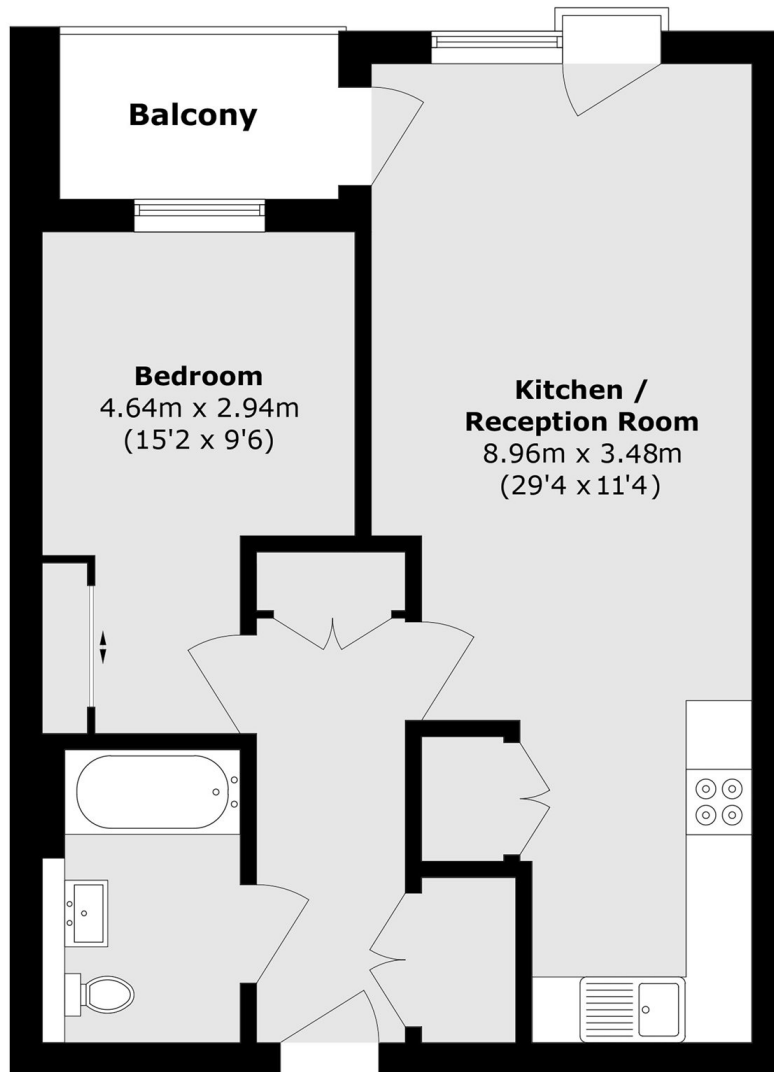
A modern one double bedroom apartment within the Silvermill development in Lewisham. With a light, open plan and spacious fitted kitchen/reception room and a private balcony offering natural light throughout the apartment. Ideally located for easy access to Lewisham town centre's amenities and transport links.

Enjoying unparalleled transport links from Lewisham Station and the Docklands Light Railway offering easy commute into London Bridge and Canary Wharf. Also a quick walking access to some of London's best green spaces, including Blackheath, Greenwich Park, and Ladywell Fields.

Features

- Double Bedroom
- Private Balcony
- On Site Gym
- 575 Sq Ft
- Close To Transport
- Chain Free

Conington Road,
London, SE13



Total area (approx.): 53.5 sq. m (575.9 sq. ft)

Balcony area (approx.): 3.9 sq. m (41.9 sq. ft)

Dexters

Brockley
369 Brockley Road
London
SE4 2AG

Sales
020 8815 2220

Energy Rating: B. We aim to make our particulars both accurate and reliable. However they are not guaranteed; nor do they form part of an offer or contract. If you require clarification on any points then please contact us, especially if you're traveling some distance to view. Please note that appliances and heating systems have not been tested and therefore no warranties can be given as to their good working order.

 **RICS** | Regulated
Estate Agent
and Letting Agent

dexters.co.uk