



Lyme Place, 195 King Street, Dukinfield, SK16 4TH

Price £170,000

Nestled in the heart of Dukinfield on the prestigious King Street, this stunning penthouse apartment offers a perfect blend of modern living and comfort. With two spacious bedrooms, this property is ideal for professionals, couples, or small families seeking a stylish home.

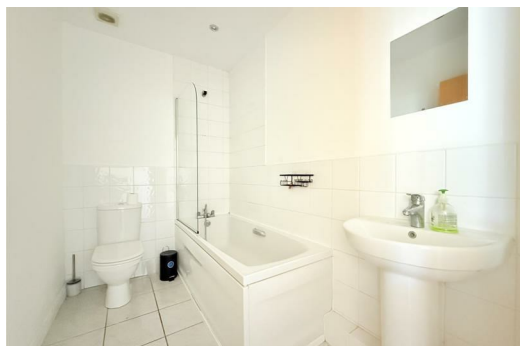
As you enter the apartment, you are greeted by a bright and airy reception room that serves as the heart of the home. This inviting space is perfect for entertaining guests or simply relaxing after a long day. The large windows allow natural light to flood in, creating a warm and welcoming atmosphere.

The penthouse boasts two generously sized bedrooms, each designed with comfort in mind. These rooms provide ample space for furnishings and personal touches, ensuring a restful retreat. The two well-appointed bathrooms add convenience and privacy, making morning routines a breeze.

One of the standout features of this property is the sun terrace, which offers a delightful outdoor space to enjoy the fresh air and sunshine. Whether you wish to sip your morning coffee or host a small gathering, this terrace is a wonderful addition to your living experience.

For those with a vehicle, the property includes parking for one car, providing added convenience in this bustling area.

In summary, this penthouse apartment on King Street is a rare find, combining spacious living with modern amenities in a desirable location. Don't miss the opportunity to make this exceptional property your new home.



Hall

Electric radiator, door to:

Living room/kitchen diner

28'6" x 16'5" (8.69m x 5.01m)

Two windows to side, two skylights, double door.

Bathroom

Door to:

Bedroom 1

24'1" x 10'2" (7.34m x 3.09m)

Window to side, skylight, electric radiator.

En-suite

Heated towel rail, door to:

Bedroom 2

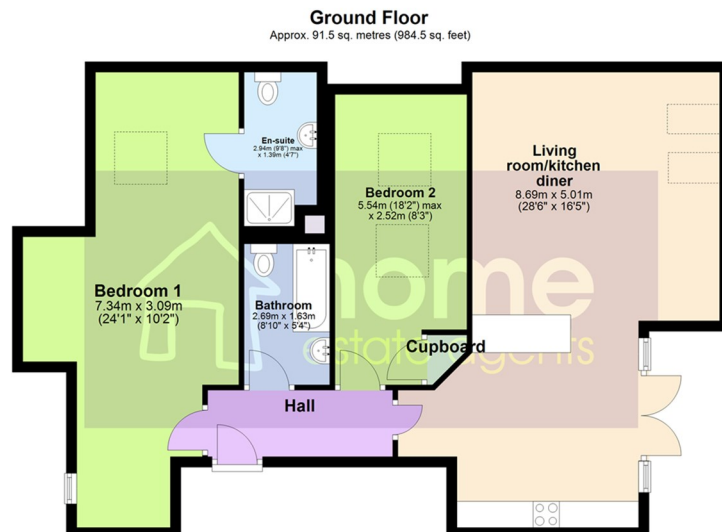
18'2" x 8'3" (5.54m x 2.52m)

Two skylights, electric radiator, door to:

DISCLAIMER

Home Estate Agents believe all the particulars given to be accurate. They have not tested or inspected any equipment, apparatus, fixtures or fittings and cannot, therefore, offer any proof or confirmation as to their condition or fitness for purpose thereof. The purchaser is advised to obtain the necessary verification from the solicitor or the surveyor. All measurements given are approximate and for guide purposes only and should not be relied upon as accurate for the purpose of buying fixtures, floor-coverings, etc. The buyer should satisfy him/herself of all measurements prior to purchase.

WWW.HOMEAA.CO.UK



Total area: approx. 91.5 sq. metres (984.5 sq. feet)

