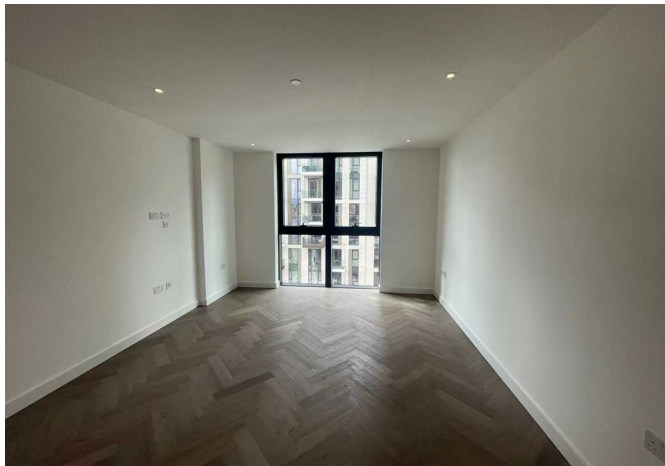




Flat 607 23 Gauging Square, London, E1W 2AW
£692 Per Week



Flat 607 23 Gauging Square, London, E1W 2AW

£692 Per Week

Welcome to this charming property located in the prestigious Gauging Square, London Dock, E1W. This delightful flat boasts a spacious reception room, perfect for entertaining guests or simply relaxing after a long day. With one cosy bedroom, this property offers a peaceful retreat from the hustle and bustle of city life.

The two bathrooms provide convenience and privacy for both residents and visitors alike. Spanning across 646 sq ft, this flat offers a comfortable living space with ample room for all your needs. Whether you're a young professional looking for a stylish city pad or a couple seeking a cosy home, this property has something for everyone.

Situated in the heart of London, this flat provides easy access to a plethora of amenities, including trendy cafes, restaurants, and shops. The vibrant atmosphere of the area is sure to captivate you from the moment you step outside your door.

Don't miss out on the opportunity to make this lovely flat your new home. Contact us today to arrange a viewing and take the first step towards living in this desirable London location.

Fees may apply please view Lessel website.

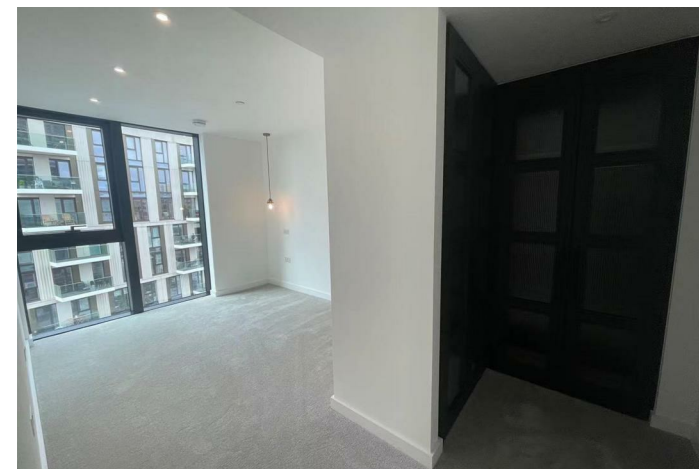
Description

Situation

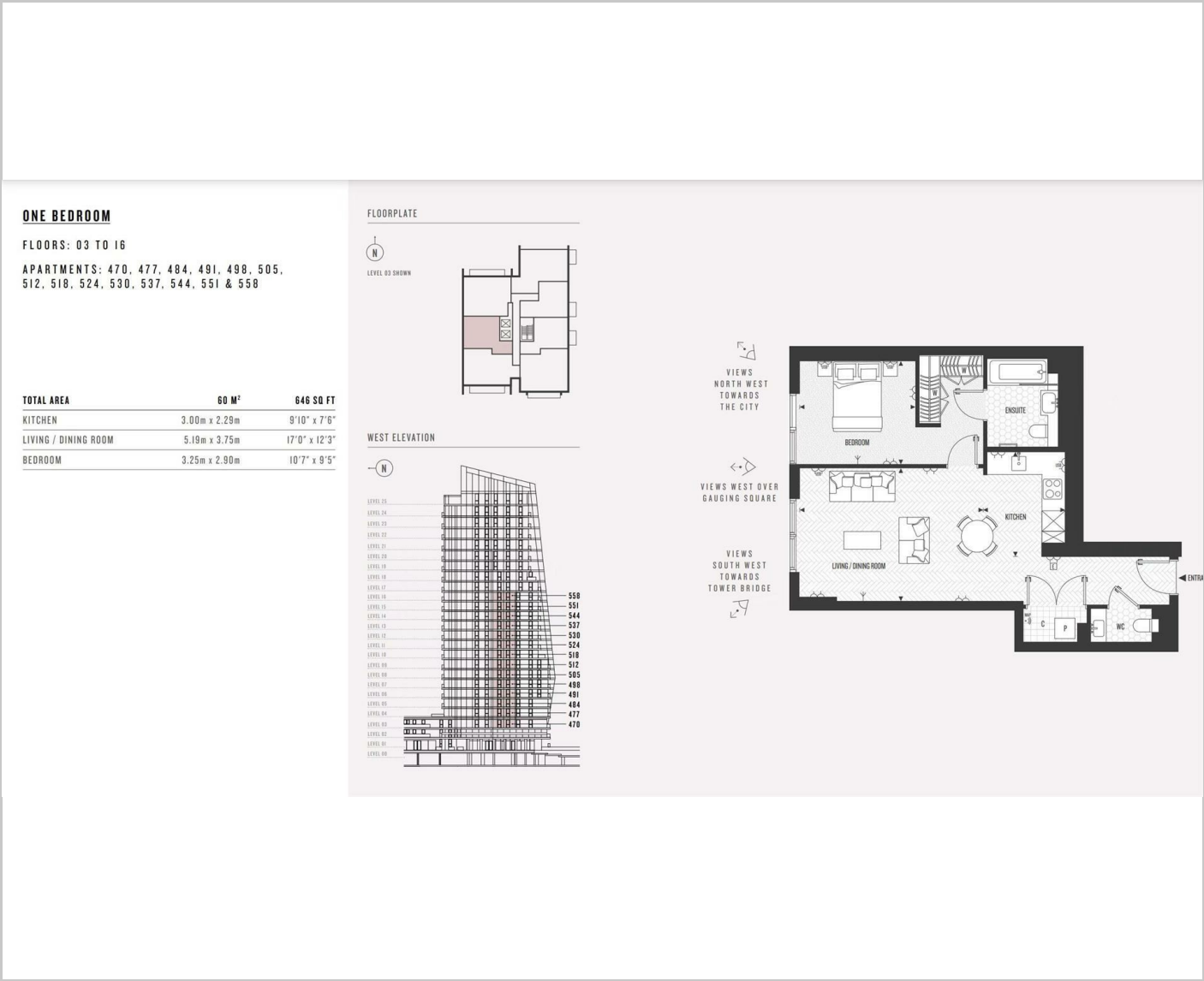
Furnished

Council Tax Band: F

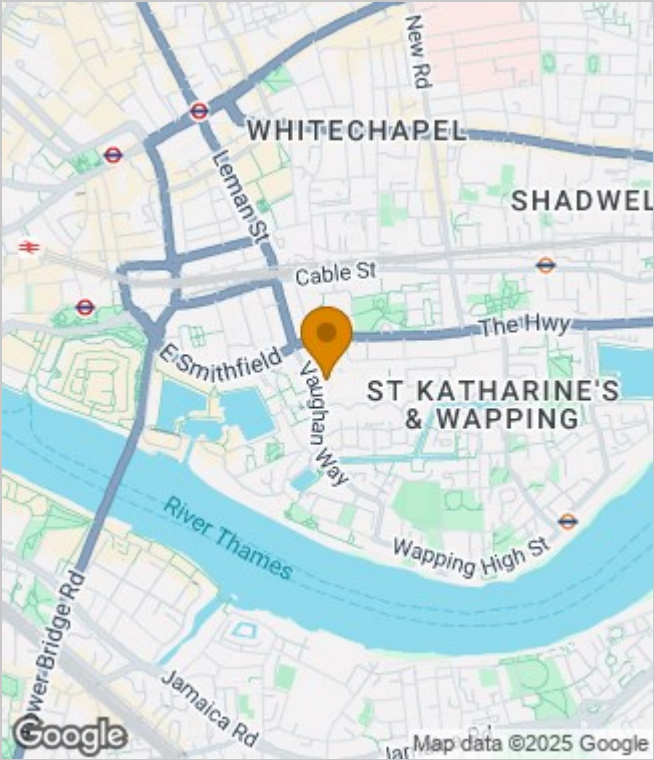
Available: 21st December 2025



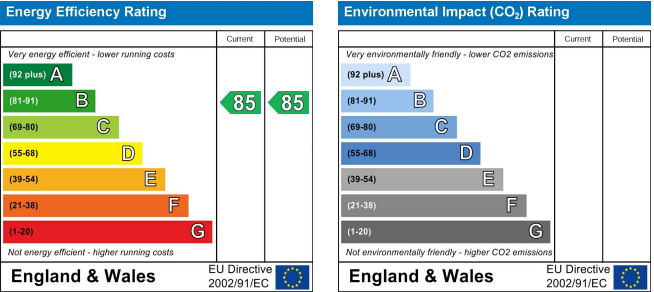
Floor Plans



Area Map



Energy Performance Graph



These particulars, whilst believed to be accurate are set out as a general outline only for guidance and do not constitute any part of an offer or contract. Intending purchasers should not rely on them as statements of representation of fact, but must satisfy themselves by inspection or otherwise as to their accuracy. No person in this firms employment has the authority to make or give any representation or warranty in respect of the property.