

**TERCELET TERRACE
HAMPSTEAD
LONDON
NW3**



Bargets Estate Agents

**A SUPERB MODERN TERRACED FAMILY HOME IN THE HEART OF HAMPSTEAD
MOMENT'S FROM HAMPSTEAD VILLAGE**



A superb modern terraced house of 2672 sq ft/248 sqm situated minutes from Hampstead Village.

The property boasts a large galleried first floor reception room as well as a spacious open plan kitchen/dining room on the ground floor that opens onto a decked private garden.

Benefits includes off street parking spaces. The nearest tube stations are Hampstead Northern Line (0.3 miles) and Finchley Road Jubilee Line (0.7 miles).

ACCOMMODATION & AMENITIES

**2 RECEPTION ROOMS, KITCHEN, 4 BEDROOMS, 3 BATHROOMS,
OFF STREET PARKING, PRIVATE GARDEN**

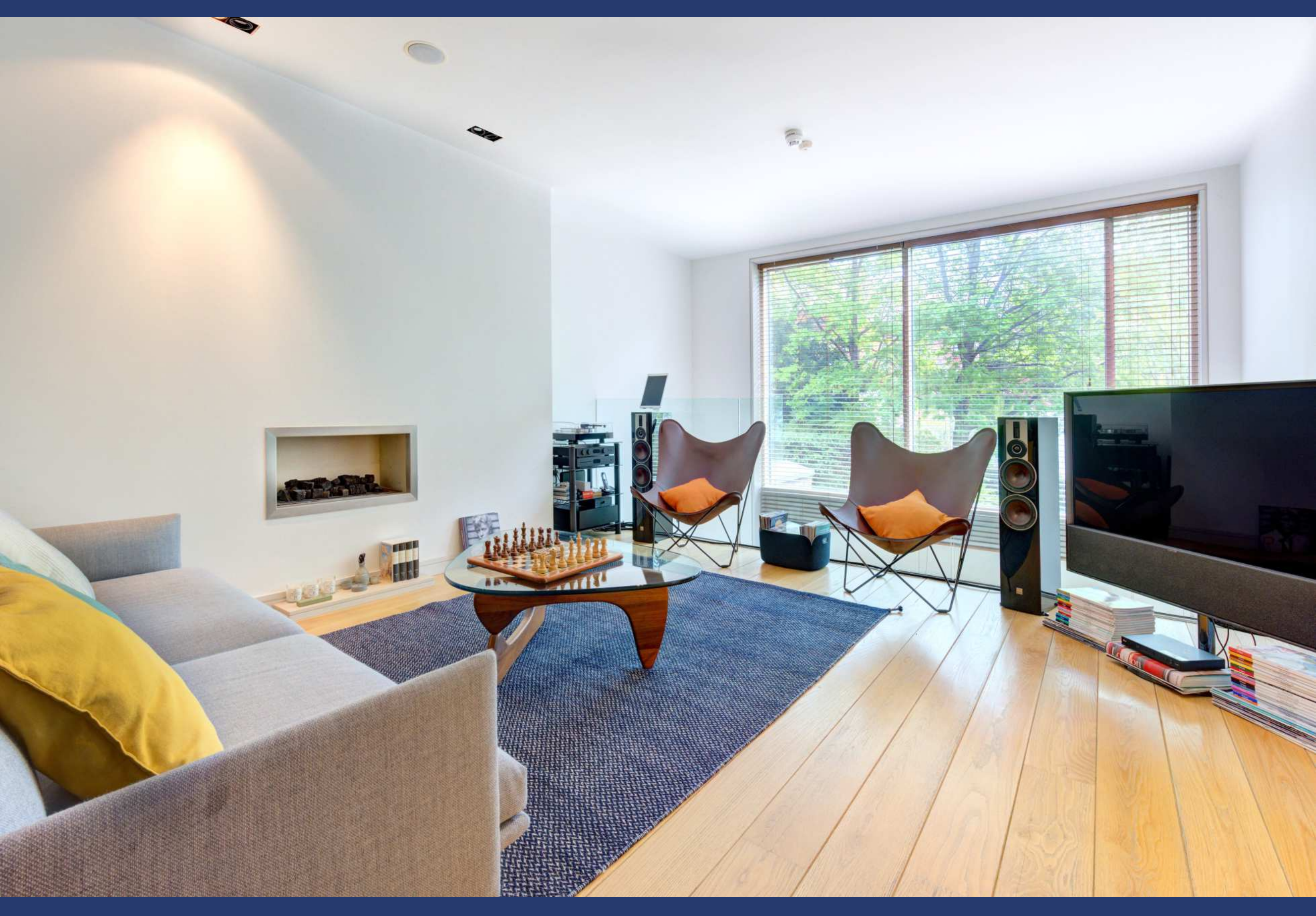
£3,550

Per Week

Subject to Contract



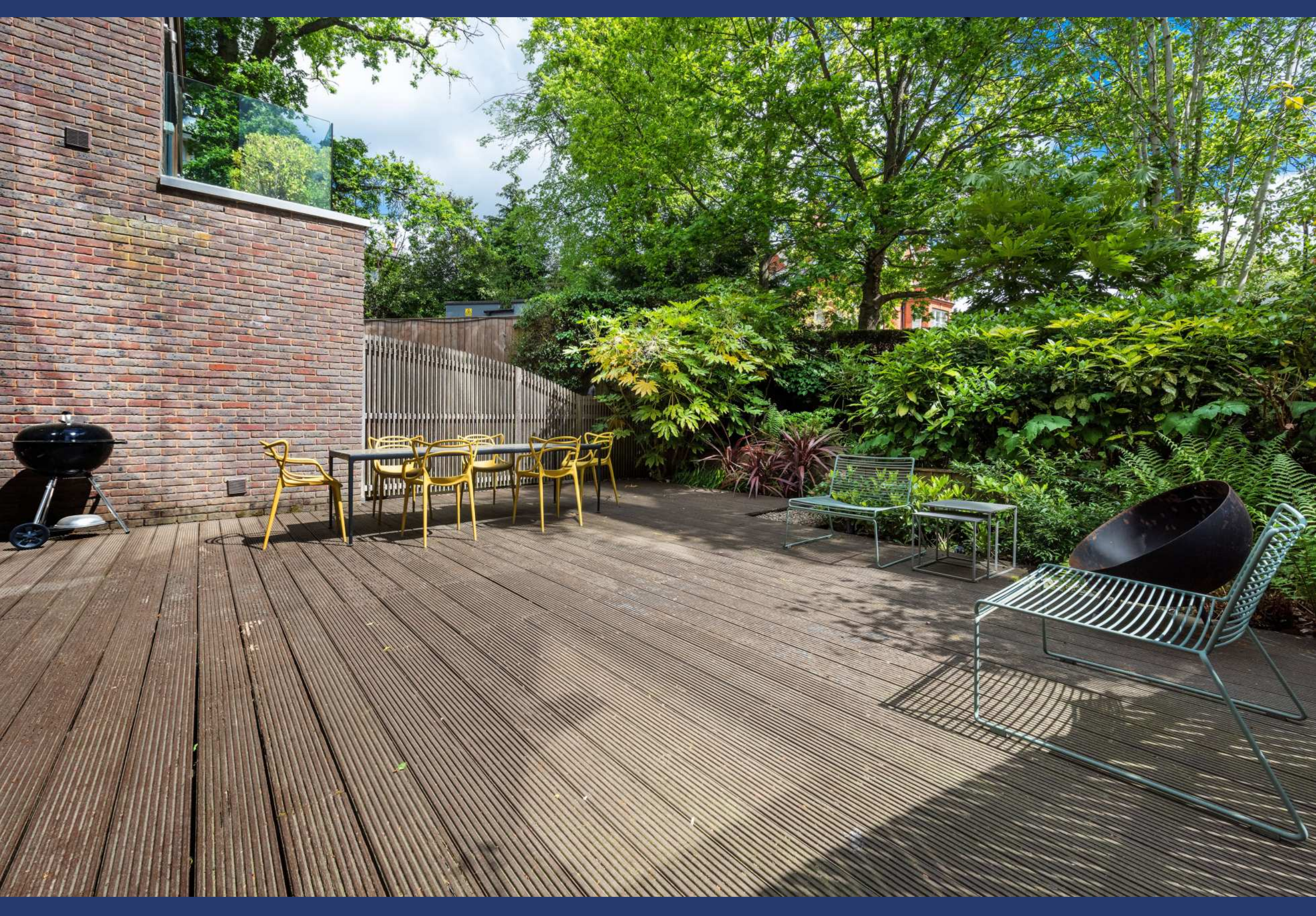














4 Tercelet Terrace

2672 sq ft (248 sq m)

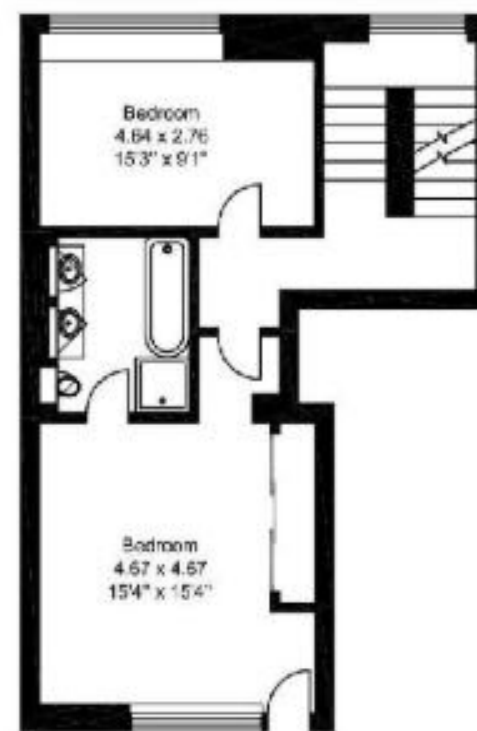
For identification purposes only. Not to scale



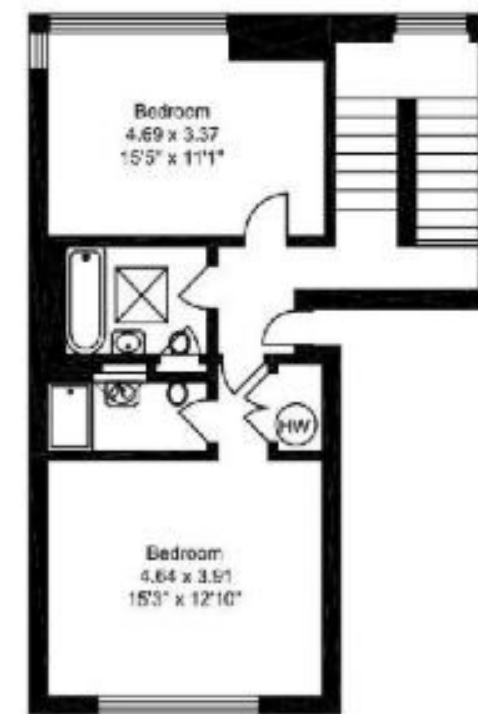
Ground Floor



First Floor



Second Floor



Third Floor

