



## Hepple Close

Isleworth, TW7

O.I.E.O £190,000

Priced for a quick sale to Cash Buyers only, this well presented one bedroom top floor flat is situated in a quiet, gated development, within a short walk of the beautiful Syon park, Syon Lane train station and local amenities. Offered to the market with no forward chain, the property offers a bright spacious reception room, modern fitted kitchen, large double bedroom with a built in wardrobe, family bathroom and a utility room. The property also benefits from allocated parking, a long lease, ample internal storage, bike storage and well kept communal areas. This is the perfect property for first time buyers or investors.

Tenure: Leasehold

EPC Energy Efficiency Rating: E

EPC Environmental Impact Rating: F

- No Forward Chain
- Gated Development
- Allocated Parking
- Beautifully Presented
- Close to the Thames Riverside
- Long Lease

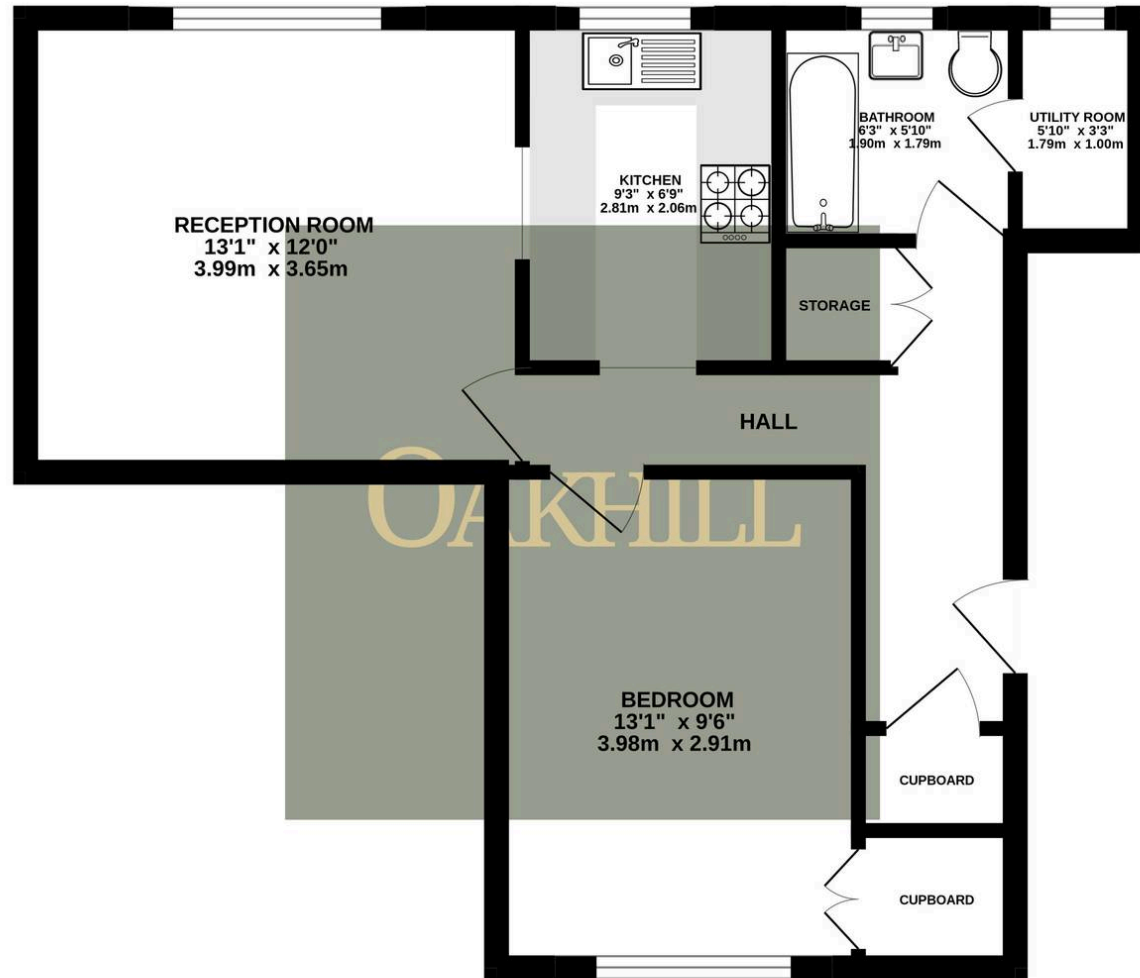


SCAN HERE  
FOR  
PROPERTY  
DETAILS



OAKHILL

510 sq.ft. (47.4 sq.m.) approx.



TOTAL FLOOR AREA : 510 sq.ft. (47.4 sq.m.) approx.

Whilst every attempt has been made to ensure the accuracy of the floorplan contained here, measurements of doors, windows, rooms and any other items are approximate and no responsibility is taken for any error, omission or mis-statement. This plan is for illustrative purposes only and should be used as such by any prospective purchaser. The services, systems and appliances shown have not been tested and no guarantee as to their operability or efficiency can be given.  
Made with Metropix ©2025

