



190 Earl's Court Road | | London | SW5 9QG

£2,390 Per month

**ESON2**  
REAL ESTATE

## Key features

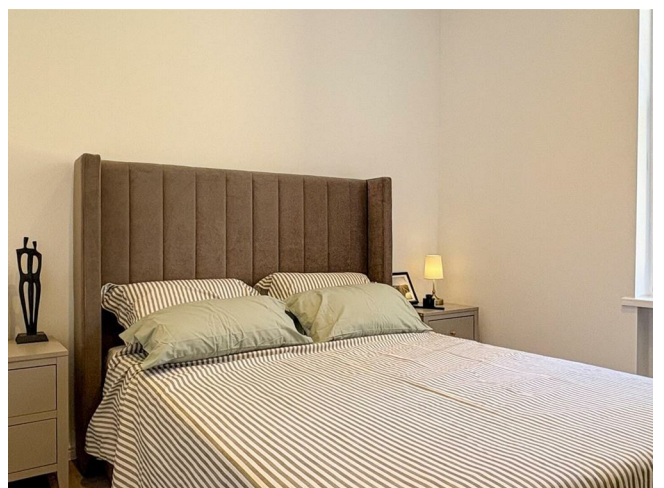


## Description

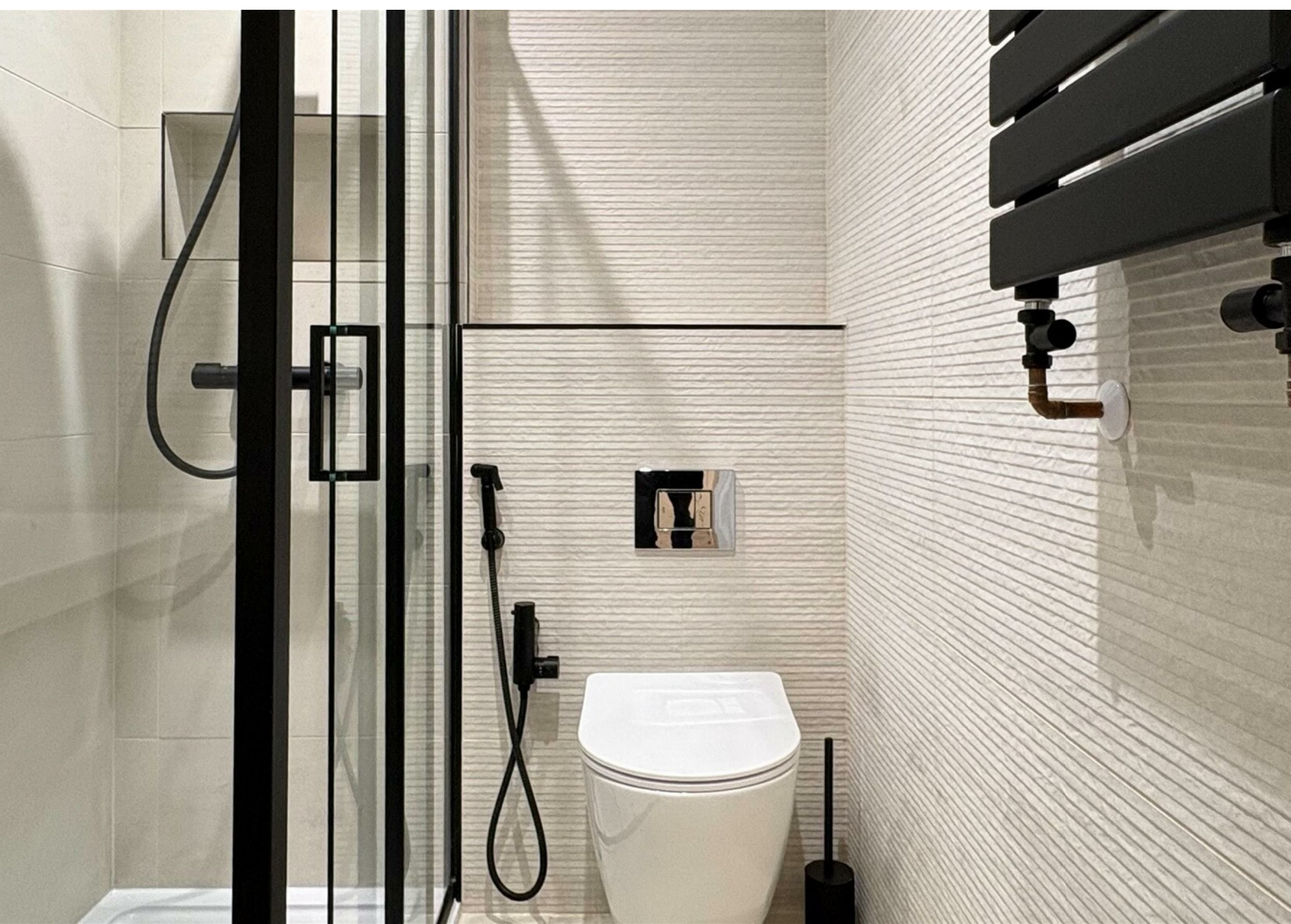
Newly refurbished one-bedroom apartment in the heart of Earl's Court, featuring high-spec finishes, a sleek integrated kitchen, stylish navy and olive living area, and a tranquil double bedroom. Close to boutique amenities and excellent transport links.



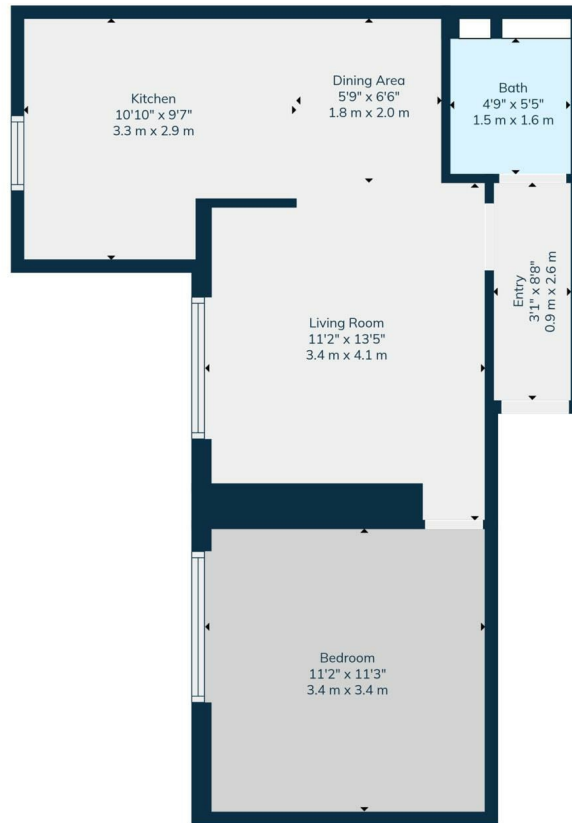
## Directions



A beautifully refurbished one-bedroom apartment in Kensington SW5 with a modern design and clean aesthetics. The separate living area features sleek lines and a versatile layout, while the kitchen includes seamless cabinetry, stone-effect worktops, and high-end integrated appliances.



# Floor plans



**Total: 474 sq. Ft, 44 m2**  
 First Floor: 474 sq. Ft, 44 m2  
 Excluded Areas: Walls: 54 sq. Ft, 5 m2

Dimensions Shown Are The Max Width Of Each Area. Sizes And Dimensions Are Approximate Actual May Vary. E & D.E.



Energy Efficiency Rating		
	Current	Potential
<i>Very energy efficient - lower running costs</i>		
(92 plus) <b>A</b>		
(81-91) <b>B</b>		
(69-80) <b>C</b>	70	72
(55-68) <b>D</b>		
(39-54) <b>E</b>		
(21-38) <b>F</b>		
(1-20) <b>G</b>		
<i>Not energy efficient - higher running costs</i>		
<b>England &amp; Wales</b>	EU Directive 2002/91/EC	

**Council Tax Band D    EPC Rating C**



301 Michelin House 81 Fulham road  
 London  
 Greater London  
 SW3 6RD  
 07920 257649  
 fayeel@eson2.co.uk  
 www.eson2.co.uk