



Gosling Way, SW9

£2,250 Per calendar month

A well maintained two bedroom, split-level apartment located just off Brixton Road. The property is in great condition with wooden flooring throughout, a modern kitchen, a separate bathroom/WC and a private balcony.

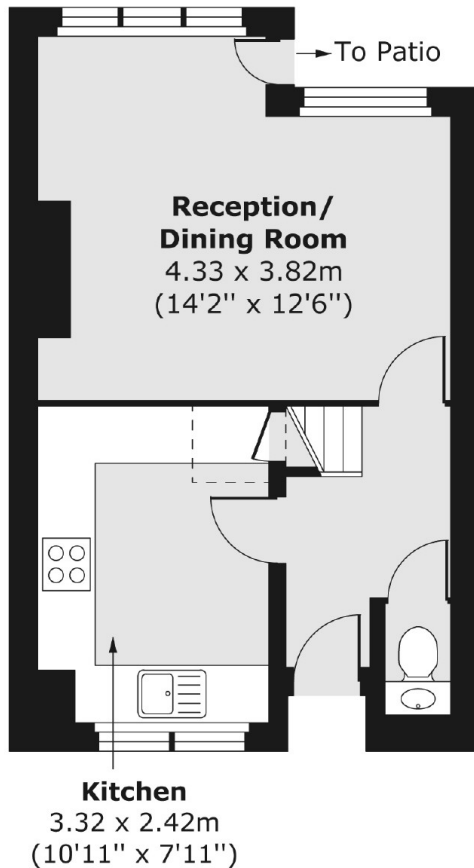
Gosling Way is a short walk from Brixton, Oval and Stockwell with an array of shops on Brixton Road and close to the green open space of Eythorne Park.

Features

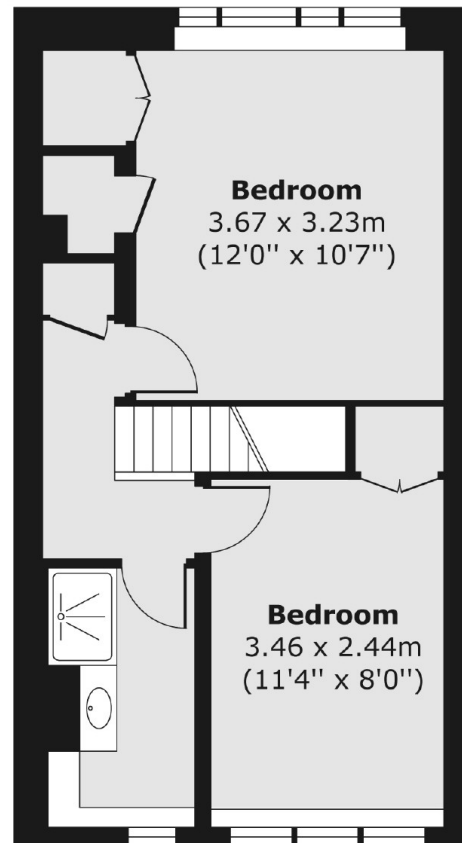
- Two Bedrooms
- Modern Bathroom
- Private Entrance
- Duplex Apartment
- Private Balcony
- Prime Location

Gosling Way, London, SW9

Ground Floor



First Floor



Total area (approx.) 62.10 sq. m (668 sq. ft)