

Property ref: 12338

Josephine Court, Southcote Road, Reading, RG30 2DG

£1,000 PCM

HASLAM'S
Lettings



This well presented one bedroom apartment is situated within a popular development which is convenient for Reading town centre, Reading West railway station and bus routes.

Reading Borough Council tax band B.

Broadband/Mobile Info: Connections available. For an indication of specific speeds and supply of Broadband and Mobile, we advise applicants go to the Ofcom website Broadband and Mobile Coverage Checker.

Available 04/06/2026

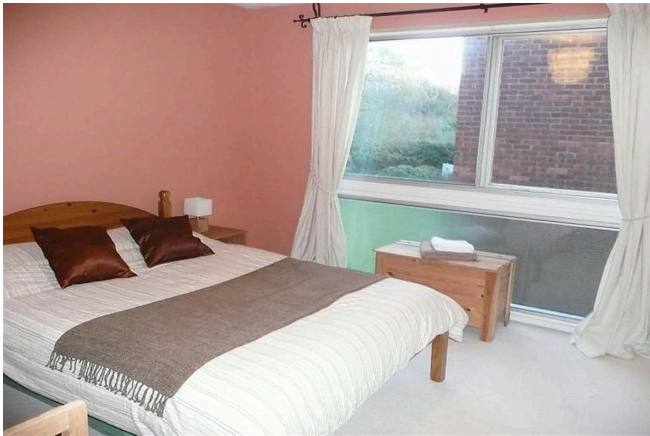
- Open-plan reception room
- Well fitted kitchen; Furnished
- Double bedroom with fitted wardrobes
- Bathroom suite with a shower; Electric heating
- First floor position; Off road parking
- EPC Rating C; Managed by HASLAM'S

*Fees For Assured Shorthold Tenancies: when you rent a property from us you will be required to pay a sum equivalent to one weeks' rent for a holding deposit. Upon successful application, this amount will be off set against your first months' rent. You will also be required to pay a security deposit equivalent to 5 weeks' rent which will be held and protected in line with Deposit legislation. For more information about our fees please visit: www.haslams.net
Fees for all other tenancies (Non Housing Act Tenancies / Company Lets): when you rent a property from us we will charge you a one-off fee per property. This charge is the equivalent of 15 days of the monthly rental charge (+VAT) with a minimum fee of £450 (inc.VAT) up to a maximum of £650 (inc.VAT). Other fees may apply depending on your circumstances.

0118 960 1055

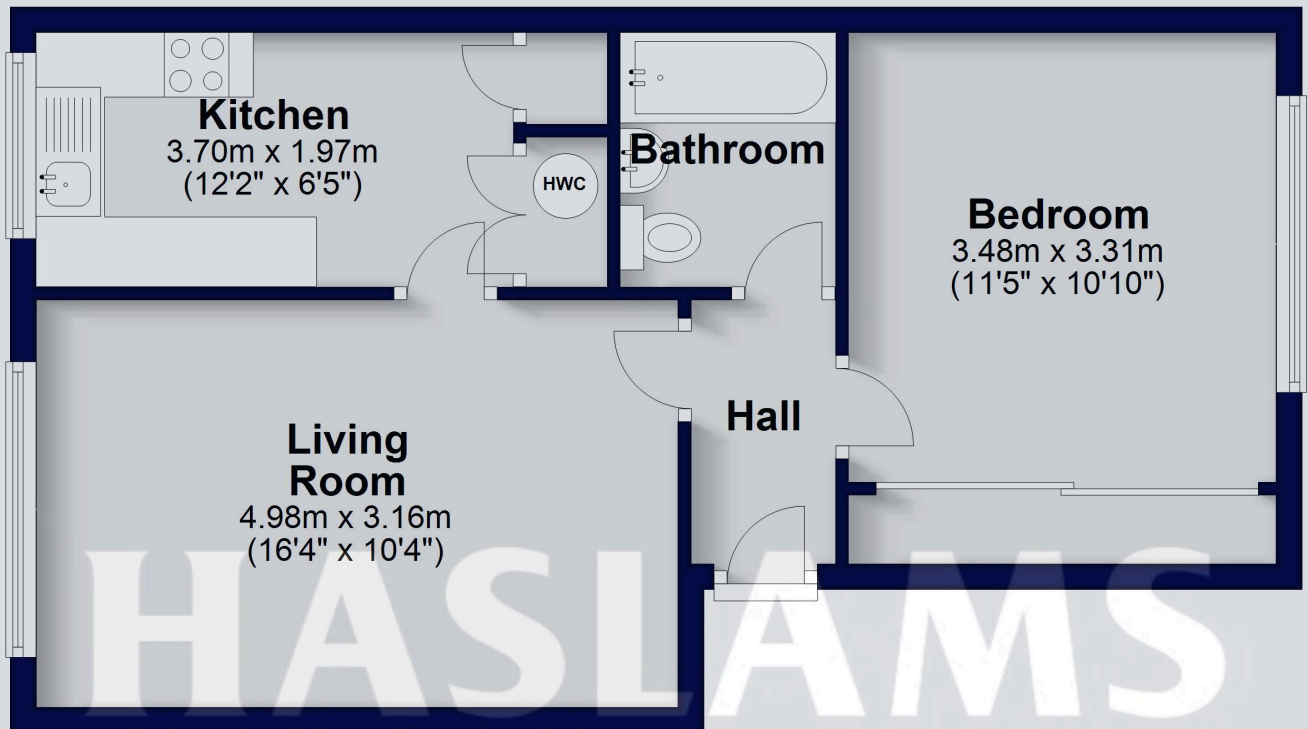
lettings@haslams.net www.haslams.net

Haslams Estate Agents Ltd, 159 Friar Street, Reading, Berkshire, RG1 1HE



First Floor

Approx. 45.0 sq. metres (484.9 sq. feet)



Total area: approx. 45.0 sq. metres (484.9 sq. feet)

This floorplan is for illustrative purposes only and is not to scale. The total area includes all the areas shown.

Plan produced using PlanUp.