



## Cable Street, E1

£2,000 Per month



- Modern One Bedroom
- South Facing Balcony
- Fitted Wardrobes
- Bike Storage
- Secured Building
- Tower Hill



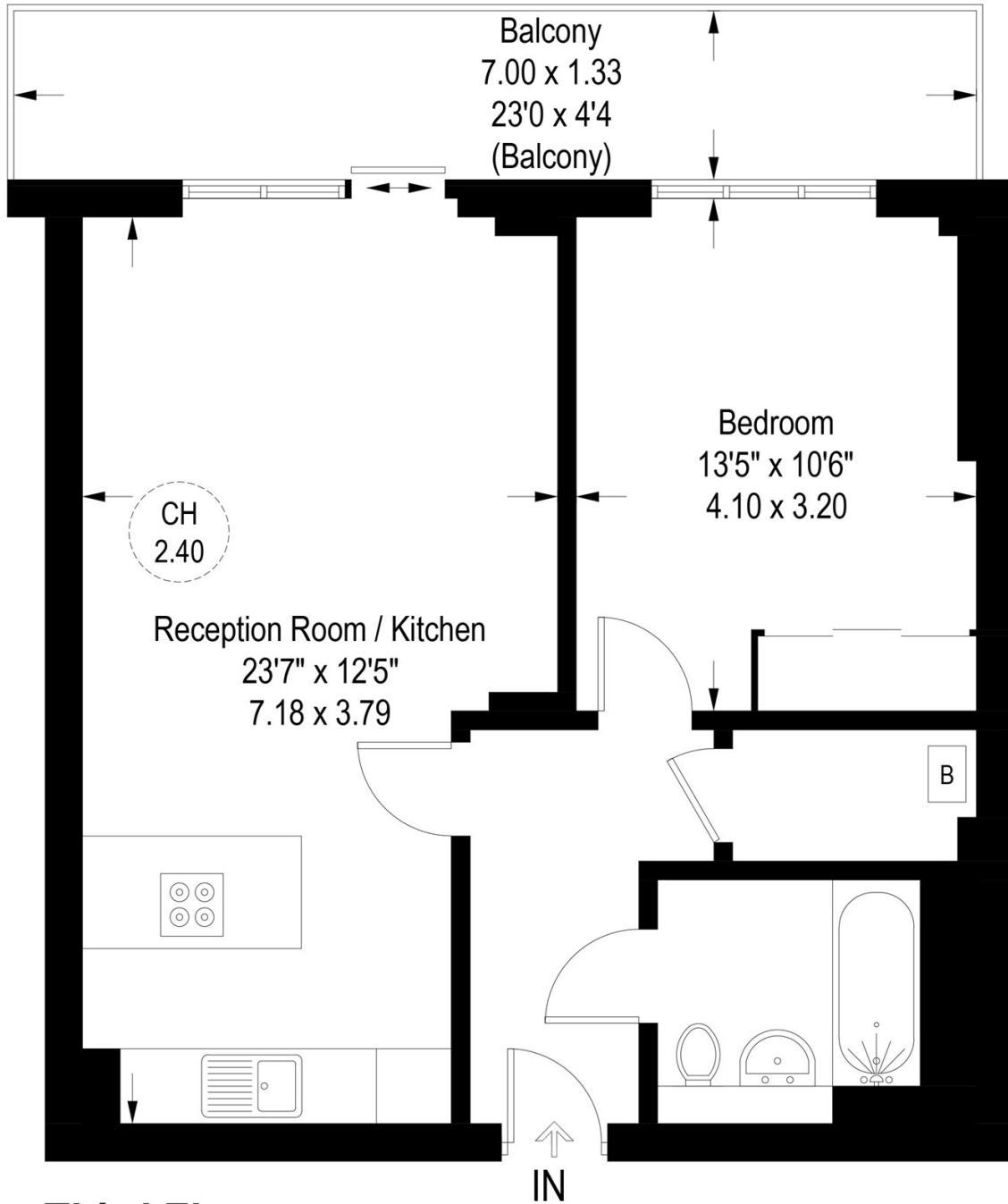
Well presented one bedroom apartment with a large South facing balcony on the third floor of this new building conveniently located close to Shadwell, Aldgate East and Tower Hill Stations. The apartment comprises of a spacious and bright reception with an open plan kitchen, a nice bedroom with fitted wardrobes and a modern bathroom. Ample storage available. Wooden floors and underfloor heating throughout. Bike storage. Secure entry system.

Ideally located near Tower Hill, Aldgate and Goodman's Fields with a wide selection of pubs, bars, restaurants and cafes nearby. Only a short walk from the Tube and DLR links and buses right around the corner for an easy access to the City, London Bridge, Canary Wharf & Shoreditch.



# Blenheim Apartments, Cable Street, E1 8NS

Approximate Gross Internal Area = 566 sq ft / 52.6 sq m  
Out Side Area = 112 sq ft / 10.4 sq m  
Total = 678 sq ft / 63.0 sq m



## Third Floor

Illustration for identification purposes only,  
measurements are approximate, not to scale. (ID725269)

35A Wapping High Street,  
London, E1W 1NR  
020 7702 3456  
ea2group.com