

Thelton Avenue, Broadbridge Heath

Offers Over £325,000

🛏️ 2 🚿 1 🚗 1



A spacious Two Bedroom Home located in the Popular Village of Broadbridge Heath, boasting a Refitted Family Bathroom, 11'10 x 11'0 Kitchen Diner and an 7'11 x 7'9 Home Office.

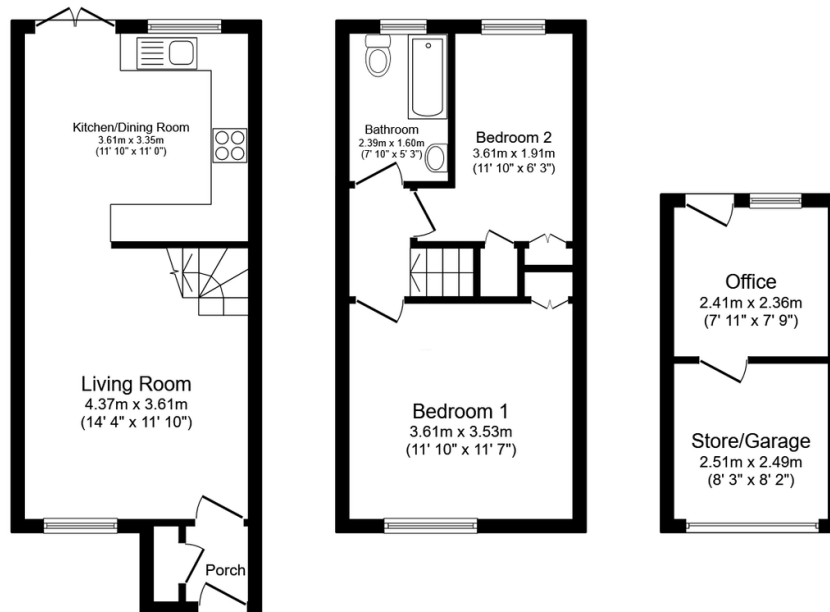
Tenure: Freehold

Council Tax: Band C

EPC Rating: Current C - Potential B

Key Features

- Watch Our Video Tour
- 7'11 x 7'9 Home Office
- 14ft Living Room
- 8'3 x 8'2 Garage/Store
- Attractive Rear Garden
- Two Bedroom Terraced Home
- 11'10 x 11'0 Kitchen Diner
- Refitted Family Bathroom
- Popular Village Location
- Close To Village School



Ground Floor Floor area 30.2 sq.m. (326 sq.ft.)

First Floor Floor area 28.2 sq.m. (304 sq.ft.)

Outbuilding Floor area 12.5 sq.m. (135 sq.ft.)

Total floor area: 71.0 sq.m. (764 sq.ft.)

This floor plan is for illustrative purposes only. It is not drawn to scale. Any measurements, floor areas (including any total floor area), openings and orientations are approximate. No details are guaranteed, they cannot be relied upon for any purpose and do not form any part of any agreement. No liability is taken for any error, omission or misstatement. A party must rely upon its own inspection(s). Powered by www.Propertybox.io