



Price
£250,000

Leasehold

2x  1x  1x 

**Nova Avenue,
Faversham, Kent, ME13**

OVER 60?

Secure this property
for up to **59% less!**

Wards
Helping you move forwards



Main features

- Exceptional purpose built flat
- Good road links and walking distance to station
- Well designed spacious accommodation featuring an en-suite shower room
- Naturally light interior with pleasant outlook
- Allocated parking

Accommodation

SECOND FLOOR

Entrance Hall

Kitchen/Living Area: 15'4 x 14'3 (4.68m x 4.35m)

Kitchen: 8'8 x 8'0 (2.64m x 2.44m)

Bedroom 1: 17'6 x 8'7 (5.34m x 2.62m)

En-Suite Shower Room

Bedroom 2: 12'6 x 10'4 (3.81m x 3.15m)

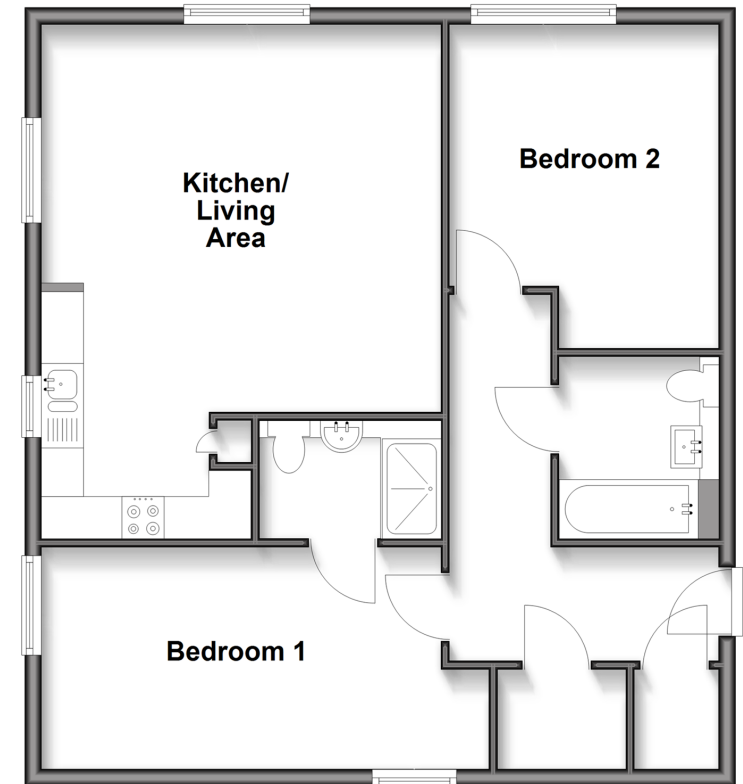
Bathroom

OUTSIDE

Allocated Parking

Top Floor

Approx. 70.8 sq. metres (762.3 sq. feet)



Call Faversham - 01795 535517 ■ wardsofkent.co.uk

- Legal advice should be taken to verify fixtures/fittings, planning, alterations and/or lease details
- Appliances & services are untested, dimensions are approximate and floor plans are not to scale
- Through a Homewise Home For Life Plan people aged 60+ can secure this property for up to 59% less, by purchasing a Lifetime Lease.



10832376/20250602/JB/PJ