



Hunter Street, WC1N

£2,700 Per calendar month

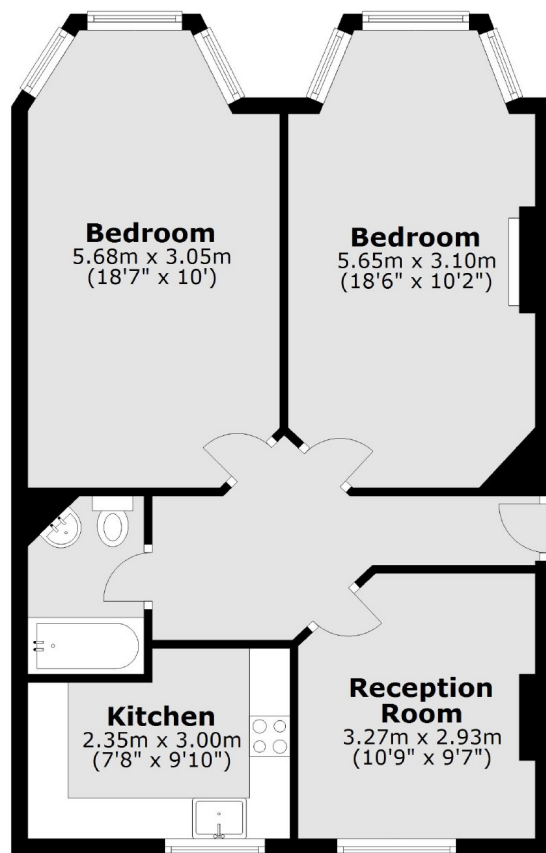
Two double bedroom flat on the raised ground level in a red brick mansion block. It has parquet wood flooring throughout with a separate kitchen and bathroom with shower over bath.

Hunter House is a very well located red brick mansion building situated close to the Brunswick Centre, Russell Square and Kings Cross. The building has a secure communal entrance and is well kept and presented. It is also close to SOAS, UCL and LSE.

Features

Two Double Bedrooms
Separate Kitchen
Parquet Wood Floor
Close To Brunswick Centre
Near To UCL, SOAS, LSE
Mansion Block

Hunter Street, London, WC1N



Total area: approx. 60.0 sq. metres (645.6 sq. feet)