



**17C, KELLY STREET, GREENOCK, PA16
8JY**



 **neillclerk**
ESTATE AGENTS



Description

Occupying a corner setting within a popular West End location next to the McLean Museum & Art Gallery this well presented, generous sized three bedroom FIRST FLOOR FLAT offers an ideal family home. Conveniently positioned for local amenities, the town centre and transport facilities including Greenock West railway station.

Specification includes: double glazing which was replaced in 2025 and gas central heating. There is a private cellar with light installed plus two additional communal cellars. Shared rear drying green. The building is protected by a security door entry system. Access to the flat is by a well maintained communal close with ornate handrail.

Apartments comprise: Entrance Vestibule by timber door with single glazed panel above, A single glazed door leads to the Reception Hallway with inbuilt cupboard. The bright and spacious Lounge features a timber fireplace with inset marble surround, electric fire and shelved alcove. A compact Home Office/Boxroom is accessed from the lounge.

There is a rear facing Dining Kitchen with maple style fitted units and black/grey marble style work surfaces. Appliances include: stainless steel chimney extractor hood, 5 ring gas hob, electric oven, integrated dishwasher & washing machine. There is ample space for table and chairs which is perfect for family living.

There are three double sized Bedrooms. The 1st bedroom benefits from three storage cupboards. The 2nd and 3rd bedrooms both benefit from working window shutters. There is a Bathroom with side window and three piece suite offering: pedestal wash hand basin, wc and bath with "Triton" shower. Additional benefits include: partial wet wall and wall tiling plus a chrome style heated towel rail.

Viewing is highly recommended for this three bedroom West End home. EPC = C

Measurements

Entrance Vestibule

Hallway

Lounge

5.03m x 5.16m (16'6" x 16'11")

Home Office / Boxroom

1.68m x 1.30m (5'6" x 4'3")

Dining Kitchen

3.05m x 4.45m (10'0" x 14'7")

Bedroom 1

3.86m x 5.16m (12'8" x 16'11")

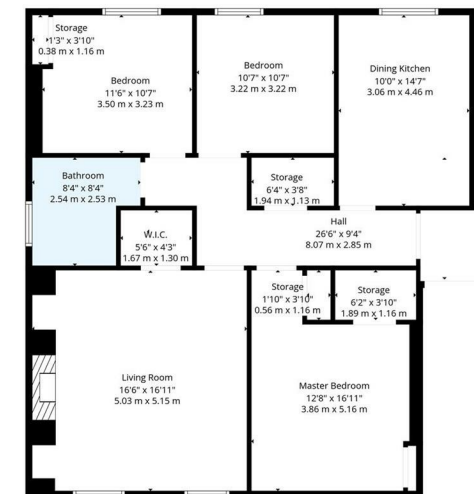
Bedroom 2

3.51m x 3.23m (11'6" x 10'7")

Bedroom 3

3.23m x 3.23m (10'7" x 10'7")

Bathroom

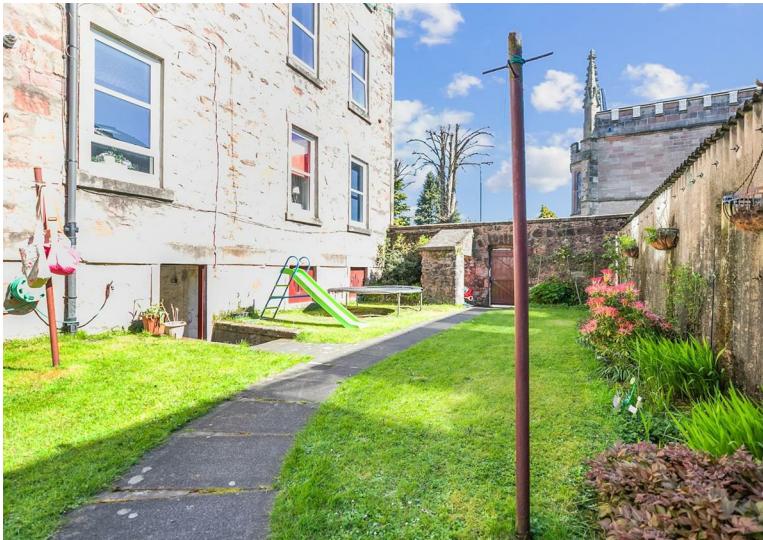
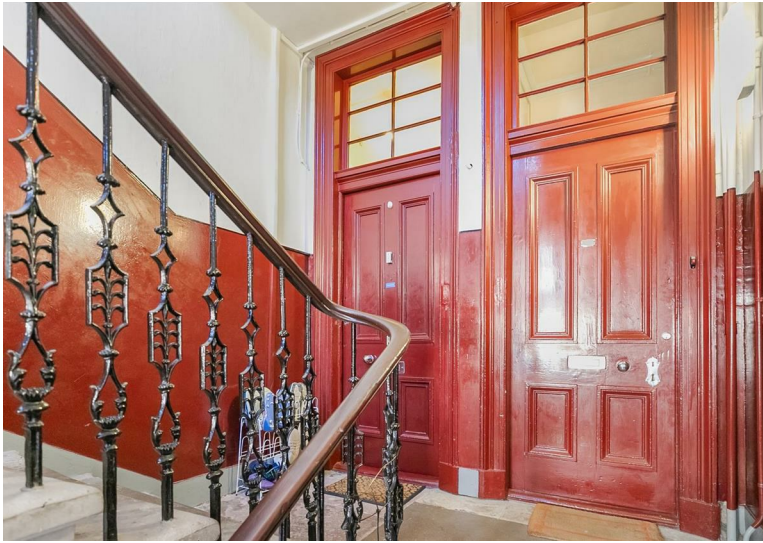












The next step..



To view call 01475 888400. Speak to us 7 days a week until 11pm every day to book your viewing appointment.

House to sell or rent?

Call 01475 888400 to book your free market appraisal.

Require a solicitor?

Ask us to supply a free legal quotation from Neill Clerk & Murray, Solicitors.
www.neillclerkmurray.co.uk

Stay fully up-to-date by following Neill Clerk on:



**60 West Blackhall Street
Greenock
Renfrewshire
PA15 1UY**

t: 01475 888400

e: sales@neillclerk.co.uk

w: www.neillclerk.co.uk



Agents Notes:

These sales particulars are set out as a general outline only, issued in good faith, but do not constitute representations of fact and do not form part of any offer or contract. Any services, equipment, appliances, fittings or central heating systems have not been tested and no warranty is given or implied that these are in working order. All measurements are approximate and for guidance only.

Neither Neill Clerk Estate Agents nor any of its employees or agents has any authority to make or give any representation or warranty whatever in relation to this property.