



SUMMERLEY STREET, SW18

£1,850 PCM

- Ground floor maisonette
- Reception room
- Modern kitchen
- One double bedroom
- Large private rear garden
- Energy rating: C





## ABOUT THE HOME

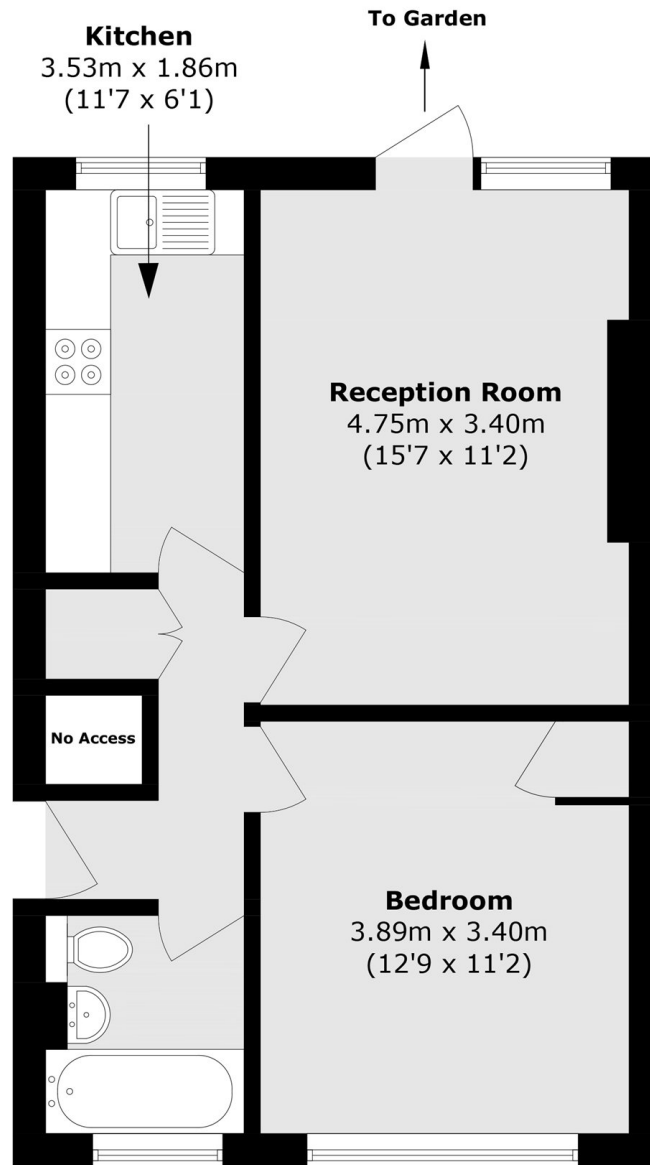
A spacious one double bedroom ground floor purpose built maisonette with large private rear garden and ample storage. This property would be ideal for a couple or single occupant.

Comprising a reception room with feature fireplace and space for dining, a modern fitted kitchen, a good size double bedroom, a modern bathroom and boasts a large private garden.

Located within minutes of Earlsfield Station as well as the local amenities of Garratt Lane, The property is best suited for a professional couple needing good transport links.







Total area (approx.): 39.6 sq. m (426.2 sq. ft)  
(Excluding External Cupboard)

#### JACKSONS EARLSFIELD

372-374 Garratt Lane,  
Earlsfield, London, SW18 4ES  
Sales: 020 8971 7979  
Lettings: 020 8971 7070

Energy Rating: Wandsworth Borough Council We aim to make our particulars both accurate and reliable. However they are not guaranteed; nor do they form part of an offer or contract. If you require clarification on any points then please contact us, especially if you're traveling some distance to view. Please note that appliances and heating systems have not been tested and therefore no warranties can be given as to their good working order.