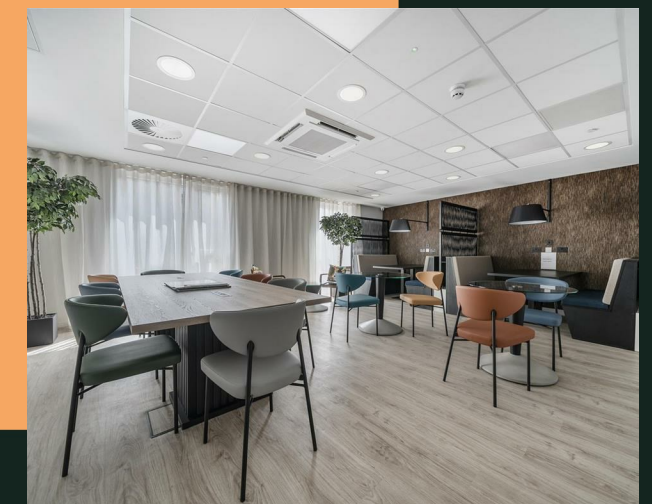
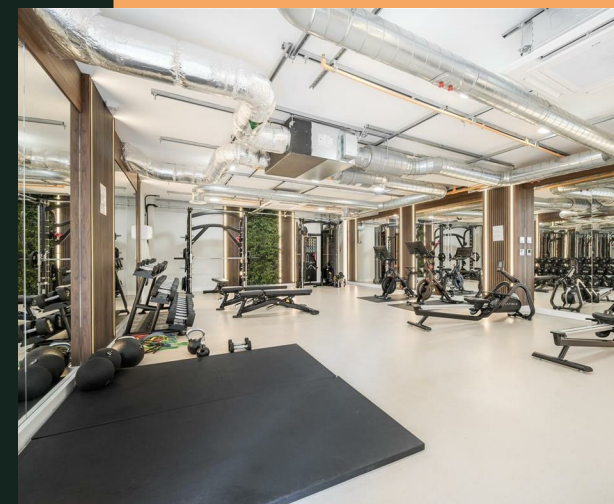


Griffiths Close, B12



PROPERTY ADDRESS
 Apartment 314
 1 Griffiths Close
 Birmingham
 B12 9BB

Energy Efficiency Rating		Current	Potential
<i>Very energy efficient - lower running costs</i>			
(92 plus) A			
(81-91) B		84	84
(69-80) C			
(55-68) D			
(39-54) E			
(21-38) F			
(1-20) G			
<i>Not energy efficient - higher running costs</i>			
England & Wales		EU Directive 2002/91/EC	

- Total cost of first month: £2,046.15 (rent & deposit)
- Unfurnished
- Parking space
- Available now
- Concierge

The recently-built apartment briefly comprises of a bright and airy open plan living, kitchen and dining area, a double bedroom with built-in wardrobe, and a bathroom. The property benefits from high spec fixtures and fittings throughout.

Offered unfurnished but includes white goods.

A parking space is available.

Belgrave Village is the new vibrant neighbourhood located in the heart of Birmingham with access to local amenities such as Edgbaston stadium, Cannon Hill Park, Moseley Village, Broadway Plaza, Brindley Place, Bullring and Grand Central. These are all easily accessible with the excellent local transport system which includes a vast range of bus services and nearby train stations such as New Street, Snow Hill and Five Ways.

The development itself offers numerous facilities for residents including a concierge, gym, co-working space and screening room, all set within attractive green surroundings.

Available now subject to acceptable referencing.

Rent: £950 per calendar month
Holding deposit: £219.23
Deposit: £1,096.15

Please note the photos and floorplan are of a similar apartment at Belgrave Village



Your Text Here

