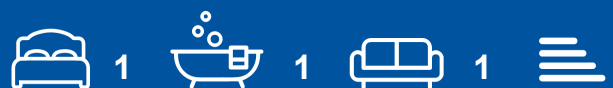




Flat (EPC Rating: )

## 3 OLD ALMSHOUSES CRUXWELL STREET, BROMYARD, HR7 4EB

# £525



# 1 Bedroom Flat located in Bromyard

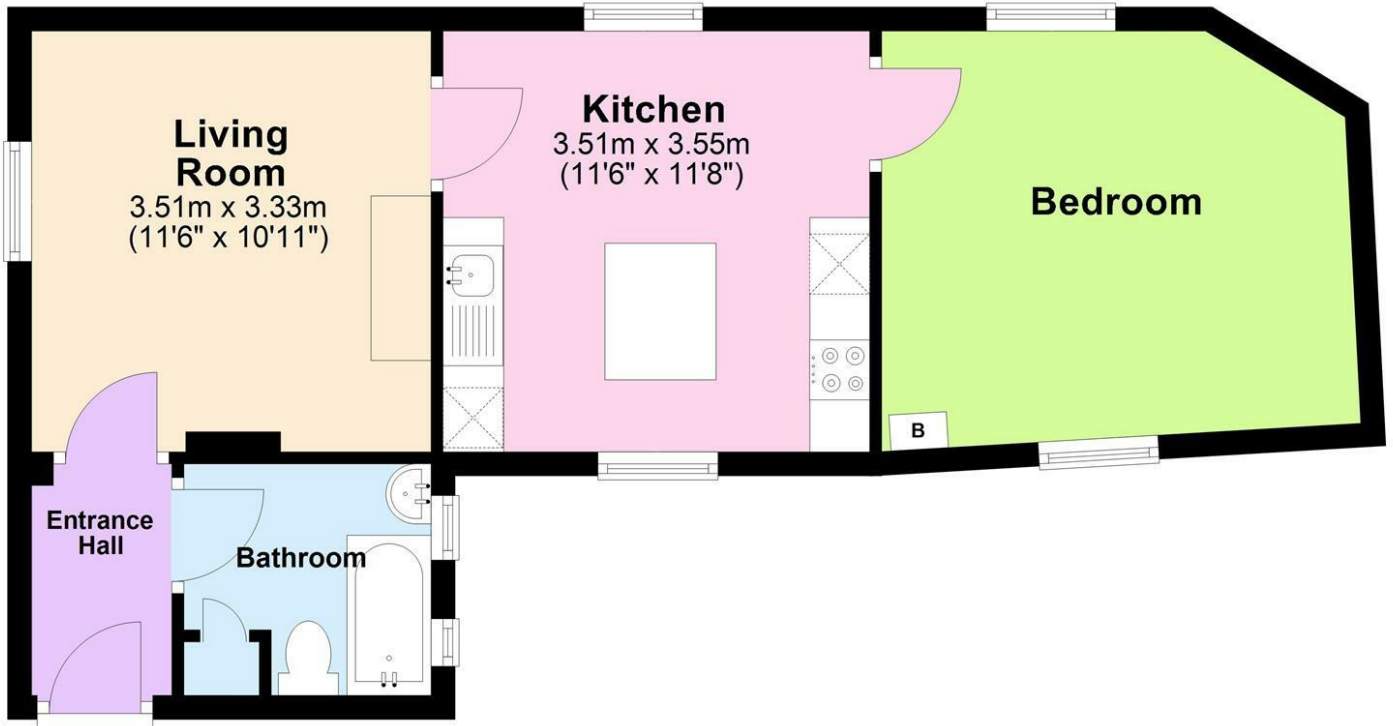
1 Bedroom | Central Town Location | Living Room | Kitchen | Communal Garden |  
Let Available Subject To Referencing And Landlords Consent



FLINT AND COOK HEREFORD LETTINGS | 22 BROAD STREET, HEREFORD,  
HEREFORDSHIRE, HR4 9AP

## Ground Floor

Approx. 44.4 sq. metres (477.9 sq. feet)



Total area: approx. 44.4 sq. metres (477.9 sq. feet)

Council Tax Band

Call us on

**01432 355455**

Energy Performance Graph

[lettings@flintandcook.co.uk](mailto:lettings@flintandcook.co.uk)

<https://www.flintandcook.co.uk/>

Energy Efficiency Rating		Current	Potential
<i>Very energy efficient - lower running costs</i>			
(92 plus) <b>A</b>			
(81-91) <b>B</b>			
(69-80) <b>C</b>			
(55-68) <b>D</b>			
(39-54) <b>E</b>			
(21-38) <b>F</b>			
(1-20) <b>G</b>			
<i>Not energy efficient - higher running costs</i>			
<b>England &amp; Wales</b>	EU Directive 2002/91/EC		

Agents Note: Whilst every care has been taken to prepare these particulars, they are for guidance purposes only. All measurements are approximate and are for general guidance purposes only and whilst every care has been taken to ensure their accuracy, they should not be relied upon and potential buyers are advised to recheck the measurements.

