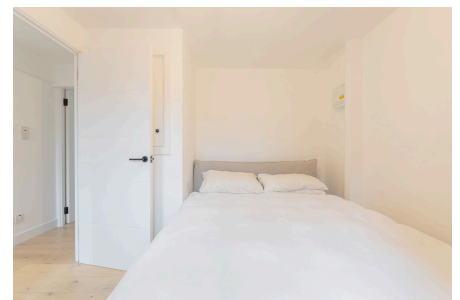
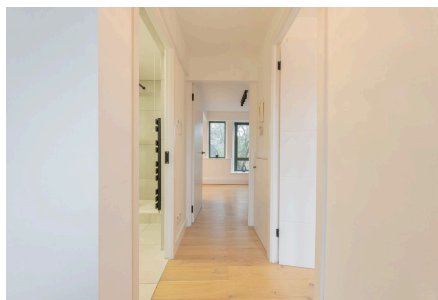


**St. Pauls Square, Birmingham, B3 1QS**

Offers Over £150,000

1 1 1



REF: CS1106

Welcome to Stevens Terrace, an exceptional opportunity for investors or first-time buyers. This beautifully presented and thoughtfully improved one-bedroom, second-floor apartment offers a prime position overlooking the highly sought-after St. Paul's Square in the Jewellery Quarter.

## Key Features

- REF: CS1106
- One Bedroom Apartment
- Second Floor Apartment
- Situated On St. Pauls Square
- Open Plan Lounge And Kitchen
- Views Over The Square
- Recently Refurbished
- Perfect For First Time Buyers Or Investors
- City Centre Living
- 387 Sq. Ft.

