



## Mastmaker Road, E14

£475,000

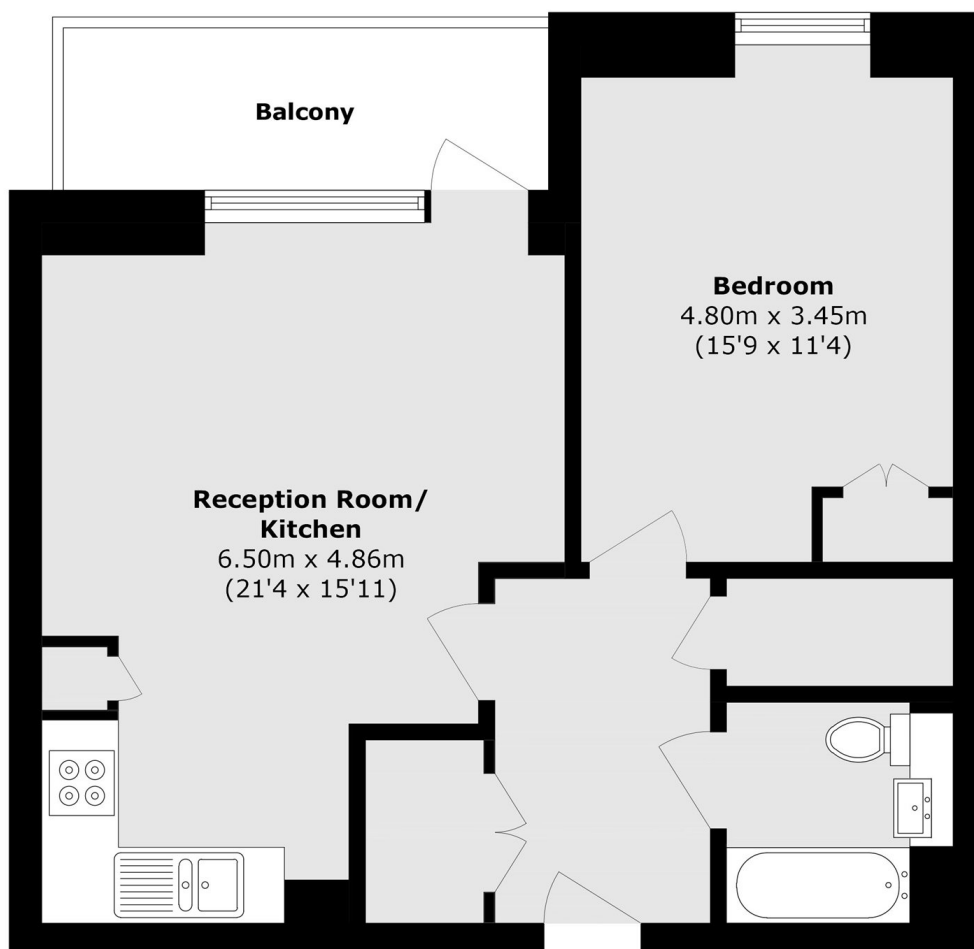
We are delighted to offer this one-bedroom home to the market within the sought-after Salvor Tower development. The property features a private balcony with river views, floor-to-ceiling windows, and is ideally located just moments from Canary Wharf.

South Quay DLR station is just 0.1 miles from Salvor Tower, with Canary Wharf also within a short walking distance, offering excellent transport links and a wealth of local amenities.

### Features

- West Facing Balcony
- Views Of The River
- Modern Throughout
- Full Height Windows
- Short walk From Canary Wharf
- Sought After Development

# Mastmaker Road, London, E14



Total area (approx.): 60.6 sq. m (652.2 sq. ft)  
Balcony area (approx.): 6.7 sq. m (72.1 sq. ft)