

15D Bedford Towers Kings Road

Brighton, BN1 2JG

Guide price £350,000

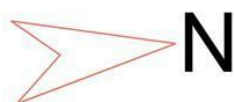
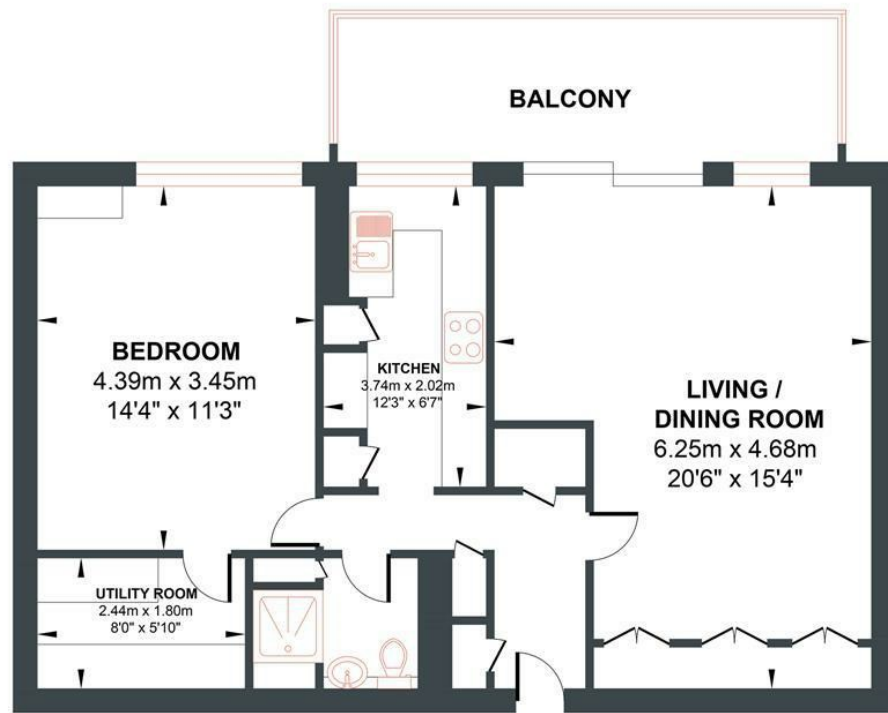


- Exceptional Sea Views
- Fully Fitted Kitchen
- Maintenance Service Charge includes Heating, Hot Water and Water
- Concierge
- Ample Storage
- 1/2 Bedrooms
- Large Living Room
- Lift to 15th Floor
- Enclosed Balcony
- Central Brighton Location

Energy Efficiency Rating		
	Current	Potential
Very energy efficient - lower running costs		
(92 plus) A		
(81-91) B		
(69-80) C	77	77
(55-68) D		
(39-54) E		
(21-38) F		
(1-20) G		
Not energy efficient - higher running costs		
England & Wales	EU Directive 2002/91/EC	

KINGS ROAD

Approximate Gross Internal Area = 64.69 sq m / 696.31 sq ft
Illustration for identification purposes only, measurements are approximate, not to scale.



FIFTEENTH FLOOR

Approximate Floor Area
696.31 sq ft
(64.69 sq m)



Foster & Co and their clients give notice that:
These sales particulars do not constitute any part of an offer of contract and are for guidance for prospective purchases only and should be not relied upon as a statement of fact.
We are not to be held responsible for material information that has not been given to us by our client at the time of marketing.
All measurements are approximate

