



Pelham Street, SW7

£3,000 Per week

Dexters



Pelham Street, SW7

This impeccably maintained four/five bedroom terraced house has been finished to an exceptionally high standard throughout.

Providing ample accommodation for both living and entertaining, the property offers two generously proportioned reception rooms, a large main bedroom, and a private roof terrace. Ideally suited to a couple or a young family in search of additional space, but also open to sharers, this home offers a harmonious blend of comfort, elegance, and functionality in a highly desirable location.

Pelham Street enjoys a prime location, offering convenient access to a variety of contemporary restaurants and artisanal delicatessens. The property is exceptionally well-connected, with South Kensington Underground Station situated nearby, providing efficient transport links to all parts of London.

Features

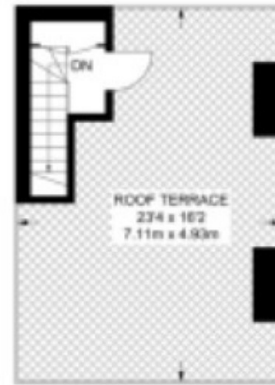
- Five Bedrooms
- Two Bathrooms
- Two Receptions
- Private Patio
- Roof Terrace
- Wood Flooring







Pelham Street, London, SW7



SECOND FLOOR
40 SQ FT / 3.7 SQ M



LOWER GROUND FLOOR
686 SQ FT / 63.7 SQ M



RAISED GROUND FLOOR
436 SQ FT / 40.5 SQ M



FIRST FLOOR
435 SQ FT / 40.4 SQ M

APPROXIMATE GROSS INTERNAL AREA
1597 SQ FT / 148.3 SQ M

This plan has been drawn for illustrative and identification purposes only.