



RALPH SAYER
SOLICITORS & ESTATE AGENTS

5/5 Oxgangs Crescent

Edinburgh EH13 9QQ

5/5 Oxgangs Crescent

Nestled in a quiet residential estate, this two-bedroom second floor flat, offers generously proportioned accommodation, along with fabulous views of the Pentlands, shared drying green and private external store. Beautifully presented, with stylish decor and in ready to move-in condition, the property is sure to appeal to a wealth of buyers and lies conveniently close to excellent amenities, schools, and has great transport links into the city centre.

Extras: all fitted floor coverings, blinds, fully integrated dishwasher and all other kitchen appliances, will be included in the sale.

Property Summary

- Second floor flat
- Lounge & dining room with views of the Pentlands
- Generous kitchen/diner
- Two excellent double bedrooms
- Three-piece bathroom
- Gas central heating & double glazing
- Shared drying green to rear
- Private external store
- Unrestricted on-street parking
- EPC Rating - C | Council Tax Band - B

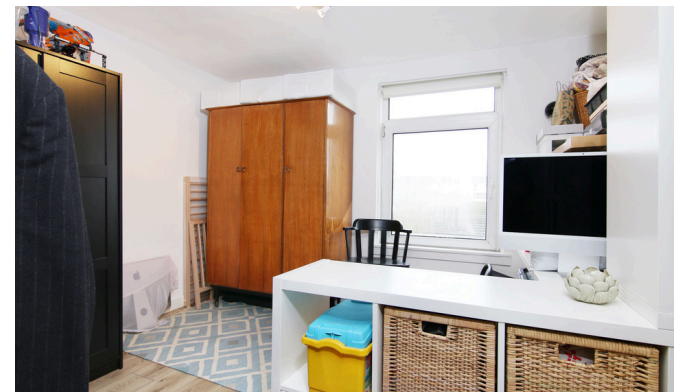
Home Report Value - £160,000







Spacious
two bedroom
flat with
Pentland views





Let us help you find your next
dream property!



RALPH SAYER
SOLICITORS & ESTATE AGENTS

property@ralphsayer.com

0131 225 5567

www.ralphsayer.com

Birch House
10 Bankhead Crossway South
Edinburgh, EH11 4EP



CHARTERED FIRM

Zoopa.co.uk **rightmove** **onTheMarket.com**

DISCLAIMER

Interested parties are advised to note interest through a solicitor, so that they are notified of any closing date, and on whose behalf their solicitor may request a copy of the seller's home report. These particulars do not form part of any contract and the statements or plans contained herein are not warranted nor to scale. Approximate measurements have been taken by electronic device at the widest point. Services and appliances have not been tested for efficiency or safety and no warranty is given as to their compliance with any regulations. Confirmation of Council tax bands can be obtained from the local Council websites. Where the property has been altered or extended in any way by the sellers or previous owners, we are not always in a position to verify, prior to preparation of the schedule of particulars, that all necessary Local Authority consents are available.



Second Floor

Approx. 69.7 sq. metres (750.4 sq. feet)

Location



Oxgangs is a very popular residential area, sandwiched between the highly regarded areas of Colinton Mains and Fairmilehead, which are all located south of the city. There are an excellent selection of local amenities, including a large Tesco store, post office, library and medical centre, as well as a wide choice of schooling, from primary through to secondary. Edinburgh Napier University's Craiglockhart campus is a 15 minute walk. Various parks can be found nearby, Colinton Mains Park is only a 5 minute stroll and it's just a short drive to the Pentlands Regional park, which offers, golfing, fishing, horseriding, dry slope skiing and fabulous walks. Excellent transport links within the area, including a regular bus service and fast, easy access to the city by pass linking to all the major road networks, Edinburgh International Airport and the Gyle Business Park.