



34 Eastdean Avenue, Epsom
Epsom

Guide Price **£575,000**



34 Eastdean Avenue

Epsom, Epsom

CHAIN FREE WITH POTENTIAL TO EXTEND SUBJECT TO PLANNING - Three-bedroom semi-detached bungalow with spacious reception, modern kitchen, generous garden, near top schools, Epsom town centre, station, and Epsom Common. Ideal family home. Call to view!
Council Tax band: D

Tenure: Freehold

EPC Energy Efficiency Rating: D

EPC Environmental Impact Rating: D

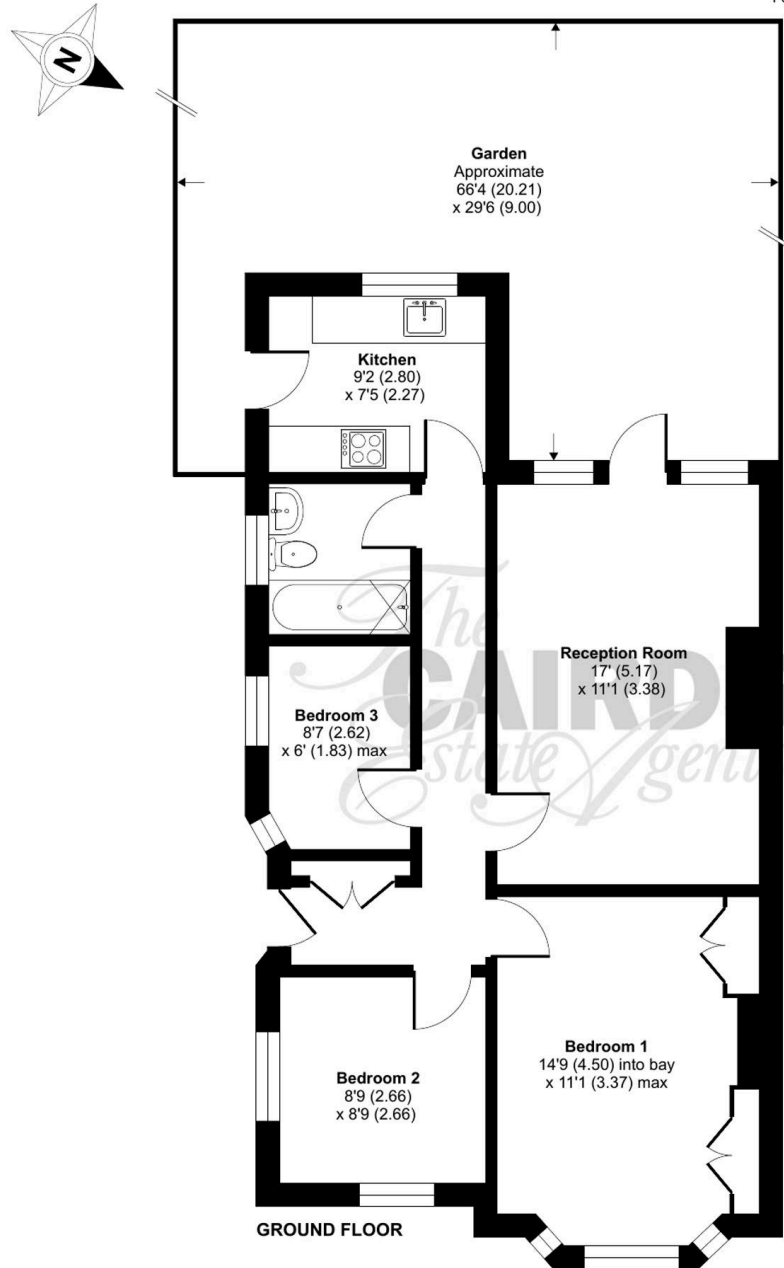
- Potential To Extend (Subject to Planning)
- No Onward Chain
- Spacious Reception
- Contemporary Kitchen
- Three Bedrooms
- Modern Bathroom
- Generous Garden
- Catchment Area For Stamford Green & Rosebery
- Easy Reach Of Town Centre & Station
- Short Walk Of Epsom Common



Eastdean Avenue, Epsom, KT18

Approximate Area = 701 sq ft / 65.1 sq

For identification only - Not to scale







Cairds The Estate Agents

Cairds The Estate Agents, 128-130 High Street - KT19 8BT

01372 743033 • homes@cairds.co.uk • www.cairds.co.uk