

Towers Wills

Town & Country

📞 01935 577 032 | 01460 298 530 | ✉ info@towerswills.co.uk



31, Glastonbury Court, Yeovil, Somerset BA21 3TW

£210,000

Towers Wills are pleased to welcome to the market this well presented two bedroom mid-terrace home, situated in a cul-de-sac on the ever popular Abbey Manor Park development. The property benefits from a garage in a separate block with two parking spaces in front, in addition to driveway parking directly in front of the property. With a conservatory and an enclosed rear garden, this home would make an ideal first time purchase or buy-to-let investment. Early viewing is strongly advised.

Accommodation:

Entrance Hall

Double glazed door to the front and radiator.

Kitchen – 2.39m x 2.38m

Double glazed window to the front. Fitted with a one and a half bowl stainless steel sink with drainer, gas central heating boiler, integrated gas hob with extractor over, integrated electric oven, and space for washing machine, slimline dishwasher and fridge freezer.

Lounge/Diner – 5.09m x 3.61m

A light and spacious living area with two radiators, staircase rising to the first floor, and double glazed patio doors opening into the conservatory.

Conservatory – 2.98m x 2.43m

With power and light, double glazed windows to the side and rear, and double glazed French doors opening onto the rear garden.

First Floor Landing

With loft hatch access.

Bedroom One – 4.09m max x 2.97m max

Double glazed window to the rear, radiator and built-in double wardrobe.

Bedroom Two – 3.22m max x 2.05m max

Double glazed window to the front, radiator and two built-in storage cupboards.

Shower Room

Double glazed window to the front. Suite comprising shower cubicle, wash hand basin, WC, heated towel rail, shaver point and extractor fan.

Outside:

To the front, the property is laid to hardstanding providing driveway parking. The garage is located in a nearby separate block and measures 5.04m x 2.53m, with up-and-over door and two additional parking spaces positioned in front.

The rear garden features a patio seating area, lawn and planted borders, providing a pleasant and low-maintenance outdoor space.

A well maintained home in a sought-after location, ideally suited to first time buyers or investors. Early viewing is highly recommended—contact Towers Wills today to arrange your appointment.

Key Features

- Mid-Terrace
- Two Bedrooms
- Well Presented Throughout
- Driveway Parking
- Garage in a Block
- Enclosed Rear Garden

Contact Us

Towers Wills Estate Agents - Yeovil

114, Hendford Hill

Yeovil

Somerset

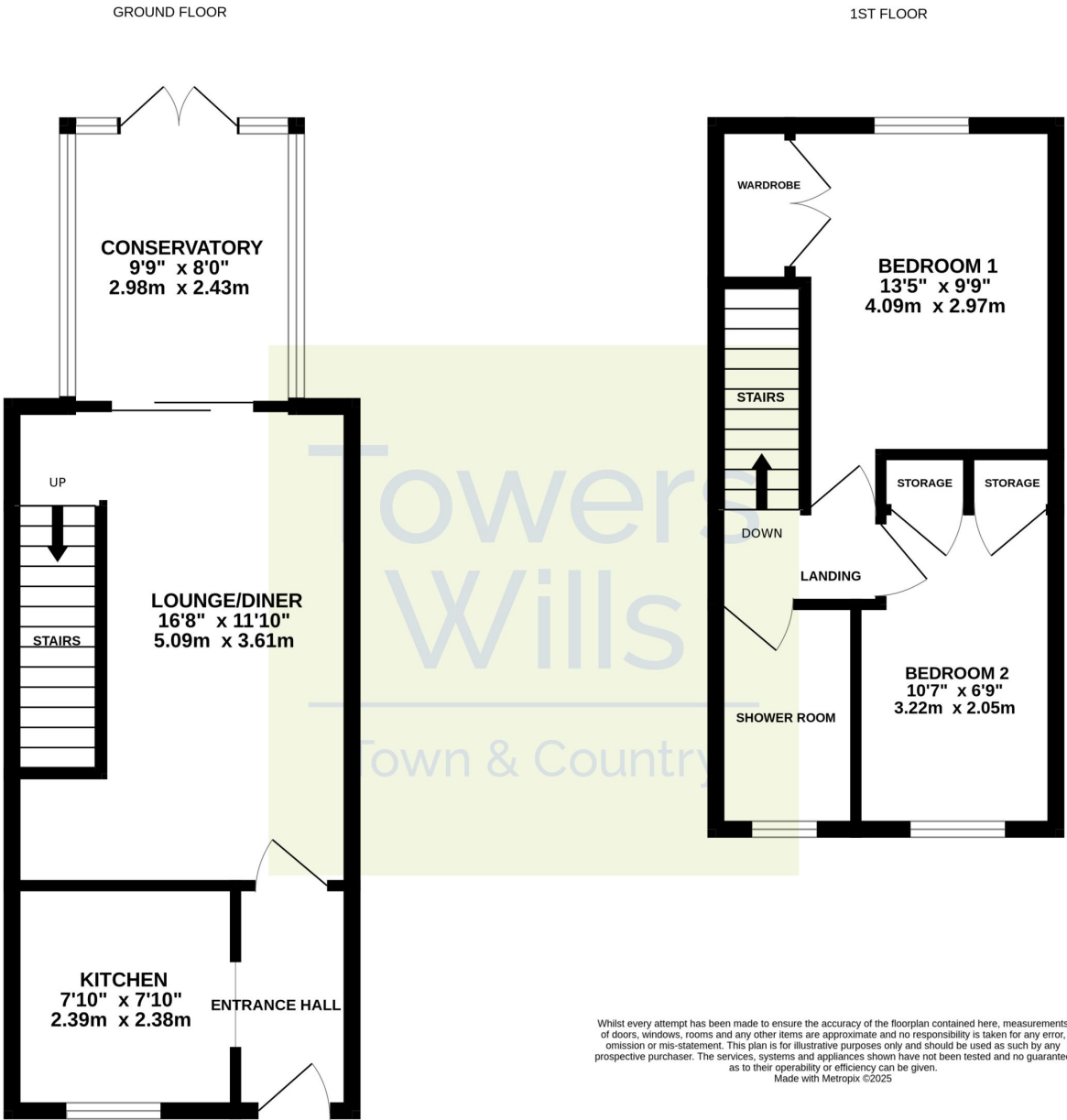
BA202RF

T: 01935 577032

E: info@towerswills.co.uk



Floor Plan



Please Note No tests have been undertaken of any of the services and any intending purchasers should satisfy themselves in this regard. Towers Wills Ltd for themselves and for the vendor of this property whose agents they are, give notice that, (i) these particulars do not constitute any part of an offer or contract, (ii) all statements contained within these particulars are made without responsibility on the part of Towers Wills or the vendor, (iii) whilst made in good faith, none of the statements contained within these particulars are to be relied upon as a statement of representation or fact, (iv) any intending purchaser must satisfy him/herself by inspection or otherwise as to the correctness of each of the statements contained within these particulars, (v) the vendor does not make or give either Towers Wills or any person in their employment any authority to make or give representation or warranty whatsoever in relation to this property.

Photographs / Floor Plans Photographs are reproduced for general information and it must not be inferred that any item is included for sale with this property. Please note floor plans are not to scale and are for identification purposes only. The photographs used in these particulars may have been taken with the use of a wide angle lens. If you have any queries as to the size of the accommodation or plot, please address these with the agent prior to making an appointment to view