

H Together Homes



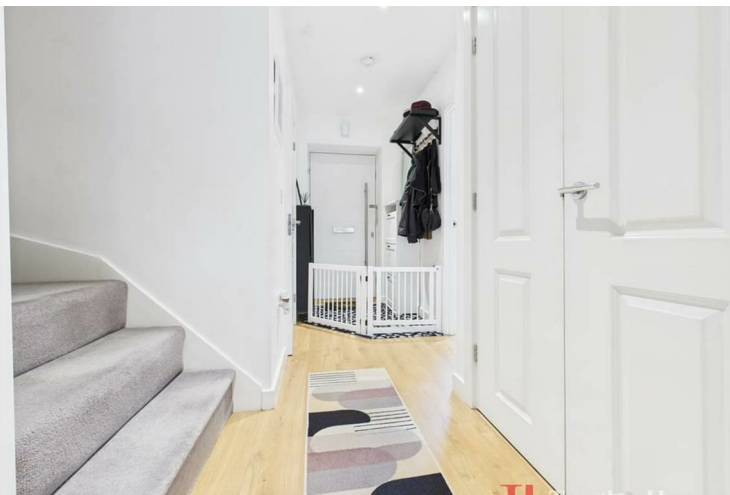
GLADIATOR WAY HORNCHURCH

£575,000
Guide price

*** GUIDE PRICE OF £575,000-£600,000 ***

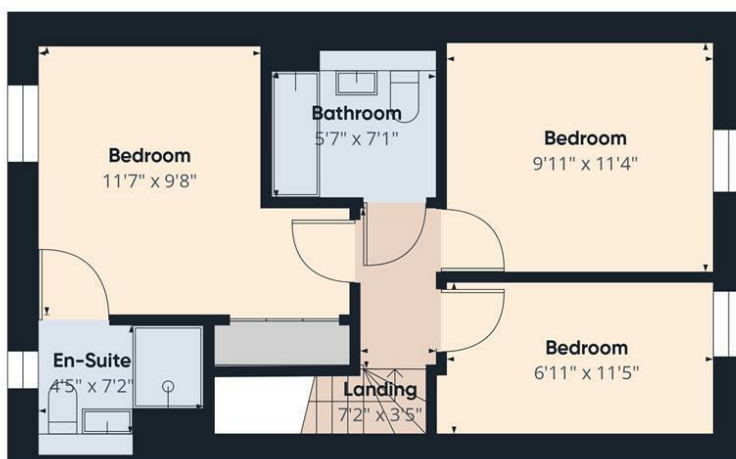
This beautifully presented, modern family home on Gladiator Way in Hornchurch is just five years old and now ready to welcome its next owners. Nestled in a quiet residential area surrounded by countryside, the property offers the ideal balance of peaceful living while remaining within easy reach of excellent schools, everyday amenities, and Hornchurch Station.

With two off street parking spaces to the front, the home makes an immediate impression. As you step through the front door, you're welcomed by a spacious and inviting entrance hallway. To your left is a contemporary kitchen, fitted with modern units, integrated appliances, and ample space for meal preparation and storage perfect for busy family life or entertaining guests. On the right hand side of the hall is a generous ground floor WC, ideal for convenience and functionality.





Floor 0



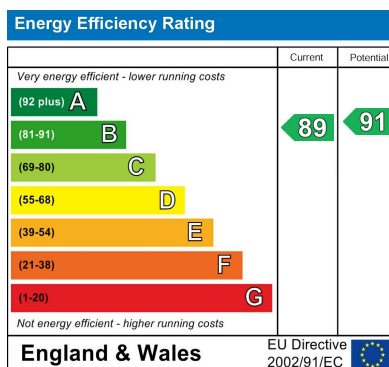
Floor 1

Approximate total area⁽¹⁾
940 ft²

(1) Excluding balconies and terraces

Calculations reference the RICS IPMS 3C standard. Measurements are approximate and not to scale. This floor plan is intended for illustration only.

GIRAFFE360



Agents Note: Whilst every care has been taken to prepare these particulars, they are for guidance purposes only. All measurements are approximate and are for general guidance purposes only and whilst every care has been taken to ensure their accuracy, they should not be relied upon and potential buyers/tenants are advised to recheck the measurements

Together Homes
21 Station Parade
Hornchurch
RM12 5AB

01708 320 600
sales@togetherhomes.co.uk
togetherhomes.co.uk

Together Homes