



FAREHAM STREET, W1F

£7,000 pcm

Stunning 3-bedroom, 2-bathroom apartment on the 5th floor of a modern development in Tottenham Court Road. Spanning 1,084 sq ft, it features a large private terrace and comes fully furnished. The property also benefits from excellent local amenities and a 24-hour concierge service.

- 3 Bedroom Apartment
- Fully Furnished
- 5th Floor with Lift Access
- Private Terrace
- 24-Hour Concierge
- Close to Tube

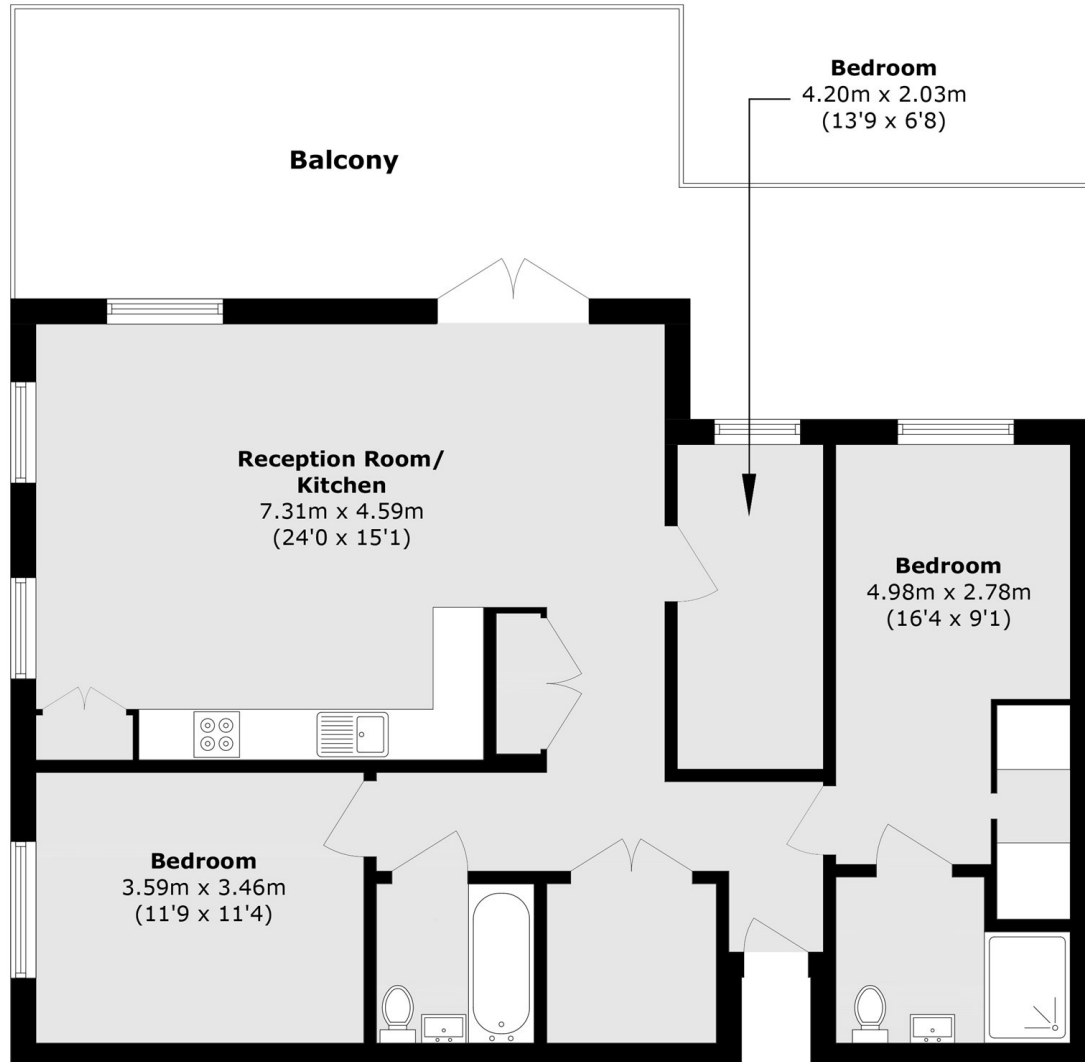


ABOUT THE HOME

Located in Soho, this flat offers vibrant city living with top dining, shopping, and entertainment nearby. Close to Tottenham Court Road Station and Oxford Circus Station for excellent transport links across London.







Total area (approx.): 96.2 sq. m (1035.4 sq. ft)
Balcony area (approx.): 39.9 sq. m (429.4 sq. ft)

LiFE RESIDENTIAL

252 Westminster Bridge
Road, London, SE1 7PD
Sales: 020 7476 0125
Lettings: 020 7620 1600

Energy Rating: B. We aim to make our particulars both accurate and reliable. However they are not guaranteed; nor do they form part of an offer or contract. If you require clarification on any points then please contact us, especially if you're traveling some distance to view. Please note that appliances and heating systems have not been tested and therefore no warranties can be given as to their good working order.