



Heatherwood Road, Ascot, SL5 7GT

£575,000 F/H



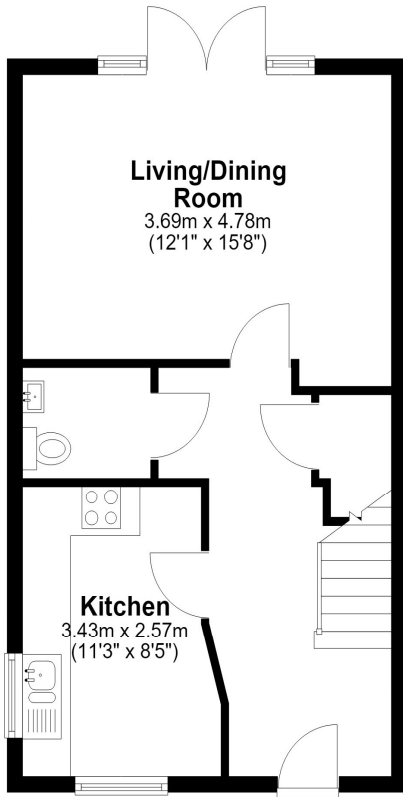
The Colton built just last year (2025) is an ideal home for both families and professionals. The versatile and high specification accommodation comprises entrance hallway, high specification fitted kitchen/breakfast room, downstairs WC, lounge/dining room, private rear garden, three bedrooms, luxury first floor family bathroom, en-suite facilities and own driveway providing off street parking for two vehicles. This property has to be viewed to appreciate the quality throughout.

Heatherwood Road, Ascot, Berkshire, SL5 7GT

FLOOR PLAN

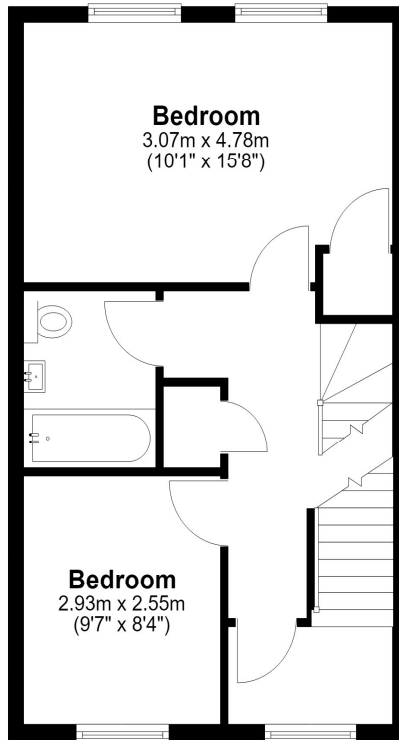
Ground Floor

Approx. 39.7 sq. metres (426.8 sq. feet)



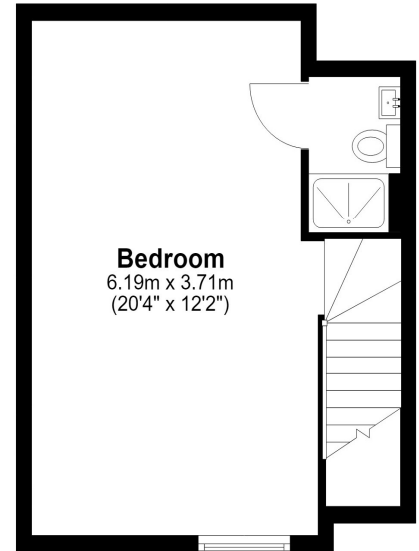
First Floor

Approx. 39.7 sq. metres (426.8 sq. feet)



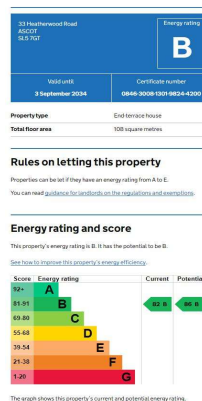
Second Floor

Approx. 28.1 sq. metres (302.2 sq. feet)



Total area: approx. 107.4 sq. metres (1155.9 sq. feet)

EPC



COUNCIL TAX BAND:

E - Windsor and Maidenhead Borough Council

VIEWINGS:

**By appointment with the clients selling agents,
Nevin & Wells Residential on 01784 437 437 or visit
www.nevinandwells.co.uk**



All measurements are approximate. Nevin & Wells Residential have not tested any systems or appliances.