



7A New Writtle Street

, Chelmsford, CM2 0RR

£1,200

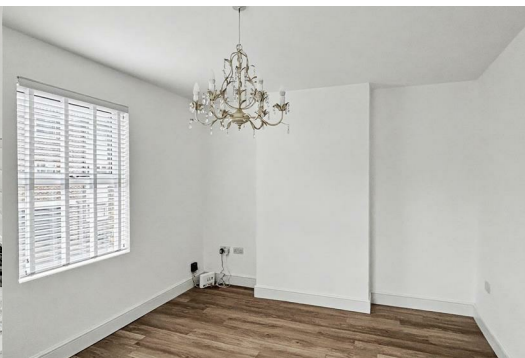


Nestled in the heart of Chelmsford, on the charming New Writtle Street, this delightful flat conversion offers a perfect blend of modern living and comfort. With one spacious bedroom, this property is ideal for individuals or couples seeking a stylish and convenient home.

The flat is designed to maximise natural light, ensuring a bright and uplifting environment throughout the day.

The well-appointed bathroom provides all the necessary amenities, while the modern kitchen is perfect for those who enjoy cooking and entertaining. The shared courtyard adds an extra touch of charm, offering a lovely outdoor space to relax and unwind.

This property is not only modern and spacious but also conveniently located near local amenities, shops, and transport links, making it an excellent choice for those who value accessibility and community.



ENTRANCE

Communal entrance via Rd, leading to shared courtyard where bin are stored

KITCHEN

Selection of modern grey base and wall units with integrated electric oven,gas hob & extractor. Under counter fridge and the Landlord is supplying a washing - Tenant responsibility
Double glazed window with blind and panel wall heater.

BATHROOM

Three piece white suite consisting of paneled bath with mains shower attachment & screen, WC, wash basin & extractor fan.
Double glazed obscure window with blinds

LOUNGE

Wood effect flooring, dual aspect window to side and rear with blinds and radiator

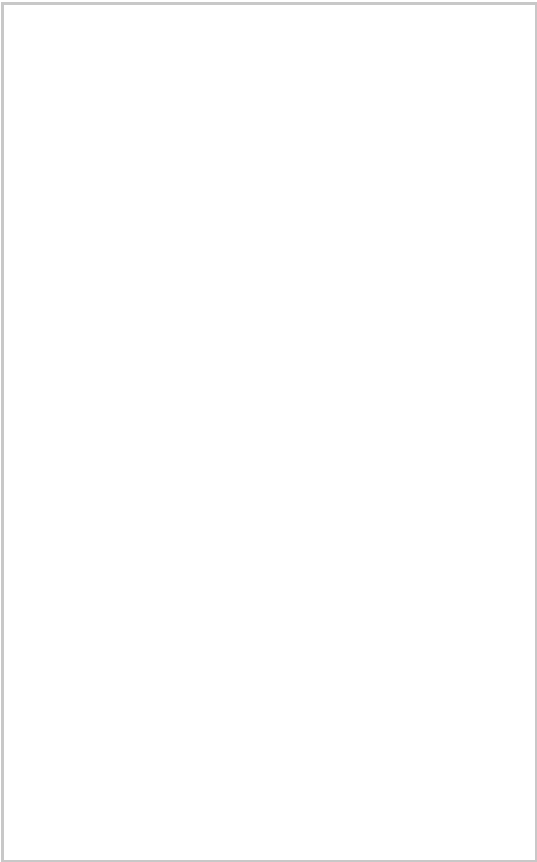
BEDROOM

Spacious double bedroom, wood effect flooring, double glazed with with blinds and radiator.

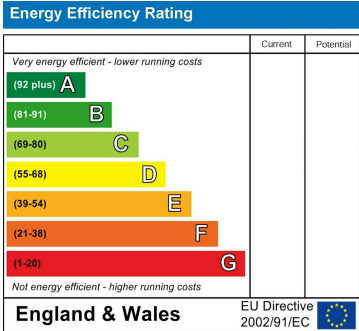
Area Map



Floor Plans



Energy Efficiency Graph



These particulars, whilst believed to be accurate are set out as a general outline only for guidance and do not constitute any part of an offer or contract. Intending purchasers should not rely on them as statements of representation of fact, but must satisfy themselves by inspection or otherwise as to their accuracy. No person in this firms employment has the authority to make or give any representation or warranty in respect of the property.