



RESIDENCE

4 Lairg Court, Airdrie, ML6 9AT

www.residenceestateagents.co.uk



Viewing by appointment with Residence Uddingston

T: 01698 444222 | E: uddingston@residencestateagents.co.uk | A: 61-63 Main Street, Uddingston, G71 7EP



RESIDENCE



4 Bedrooms | 2 Public Rooms | 4 Bathrooms



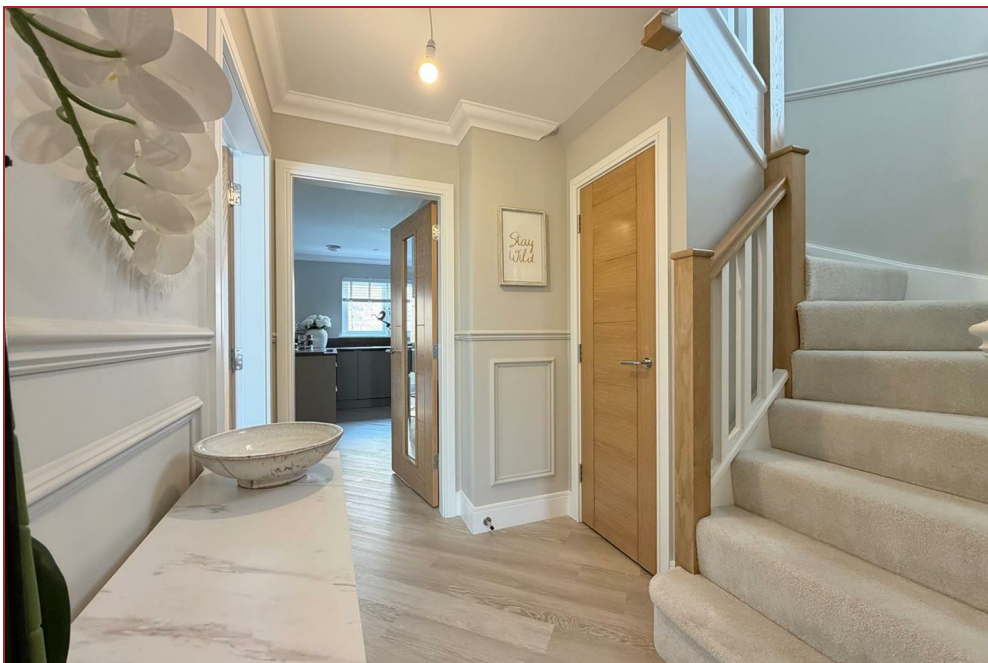
This stunning modern four-bedroom detached villa offers beautifully presented, spacious accommodation and is finished to an exceptional standard throughout, set within private landscaped gardens.

Built by McKernan Homes circa 2025, the property is the highly regarded 'Carradale' house type and extends to approximately 1,647 sq ft of well-designed family living space. The home has been thoughtfully designed with a strong emphasis on quality and detail, featuring decorative wall panelling, oak veneer internal doors, and high-specification finishes throughout. The bathrooms, en-suites, and cloakroom are fitted with luxury sanitary ware and Porcelanosa tiling, while the contemporary kitchen is equipped with a range of quality integrated Siemens appliances. All bedrooms are generously proportioned and benefit from fitted wardrobes, with the principal bedroom further enhanced by a walk-in dressing room. Additional features include luxury floor coverings, an A-rated condensing gas boiler, and high-performance double glazing.

The accommodation comprises a welcoming reception hall, cloakroom WC, a study, a formal lounge, and a superb open-plan living and dining area which flows seamlessly into the luxury fitted kitchen, with a separate utility room providing additional convenience. The upper level offers four generously sized bedrooms, including a principal suite with dressing room and en-suite, a second en-suite bedroom, and a spacious four-piece family bathroom. An integral garage provides further practicality.

Externally, the front garden features a monoblock driveway with parking for multiple vehicles. The private rear garden is fully enclosed and landscaped, incorporating a decked seating area, lawn, and planted borders.

Situated within a quiet cul-de-sac of just eleven homes, Lairg Court forms part of a sought-after modern development, ideally placed for access to a wide range of local amenities, schooling, and transport links.



1657.60 sq ft | EER = B



RESIDENCE





RESIDENCE





Lairg Court



Floor Plan measurements are approximate and are for illustrative purposes only.
 While we do not doubt the floor plans accuracy, we make no guarantee, warranty or representation
 as to the accuracy and completeness of the floor plan. You or your advisors should conduct a careful,
 independent investigation of the property to determine to your satisfaction as to the suitability
 of the property for your space requirements.

Produced by Plush Plans Ltd

We believe these details to be accurate; however, they do not form any part of a contract. Fixtures and fittings are not included unless specified in the enclosed. Photographs are for general information and it must not be inferred that any item is included for sale with the property. All distances and measurements are approximate. Floorplans may not be to scale and are for illustration purposes only.