



CHEZ NOUS

Chez Nous

La Grande Route Du Mont A L'Abbe



Chez Nous, La Grande Route Du Mont A L`Abbe, St Helier, JE2 3HA

This attractive family home is located on the edge of town, offering a blend of comfort and practicality ideal for modern living.

The accommodation includes three well-proportioned bedrooms, a family bathroom, and the added benefit of cloakrooms on both the ground and first floors perfect for a busy household.

The living space features two versatile reception rooms, well suited for both everyday living and entertaining, along with a fully fitted, high specification kitchen. A separate utility room and a spacious rear porch further enhance the home`s functionality, providing additional storage and convenience.

Outside, the property offers three off street parking spaces and an enclosed rear garden, thoughtfully laid out with a mix of lawn and patio areas, as well as a useful storage shed and fully plumbed in hot tub.

Conveniently situated within easy reach of local schools and just a short distance from the town centre, with a range of shops and amenities close by, this home presents an excellent opportunity for comfortable, family oriented living.



Parish: St Helier

Qualification: Qualified

Tenure: Freehold

Price £765,000



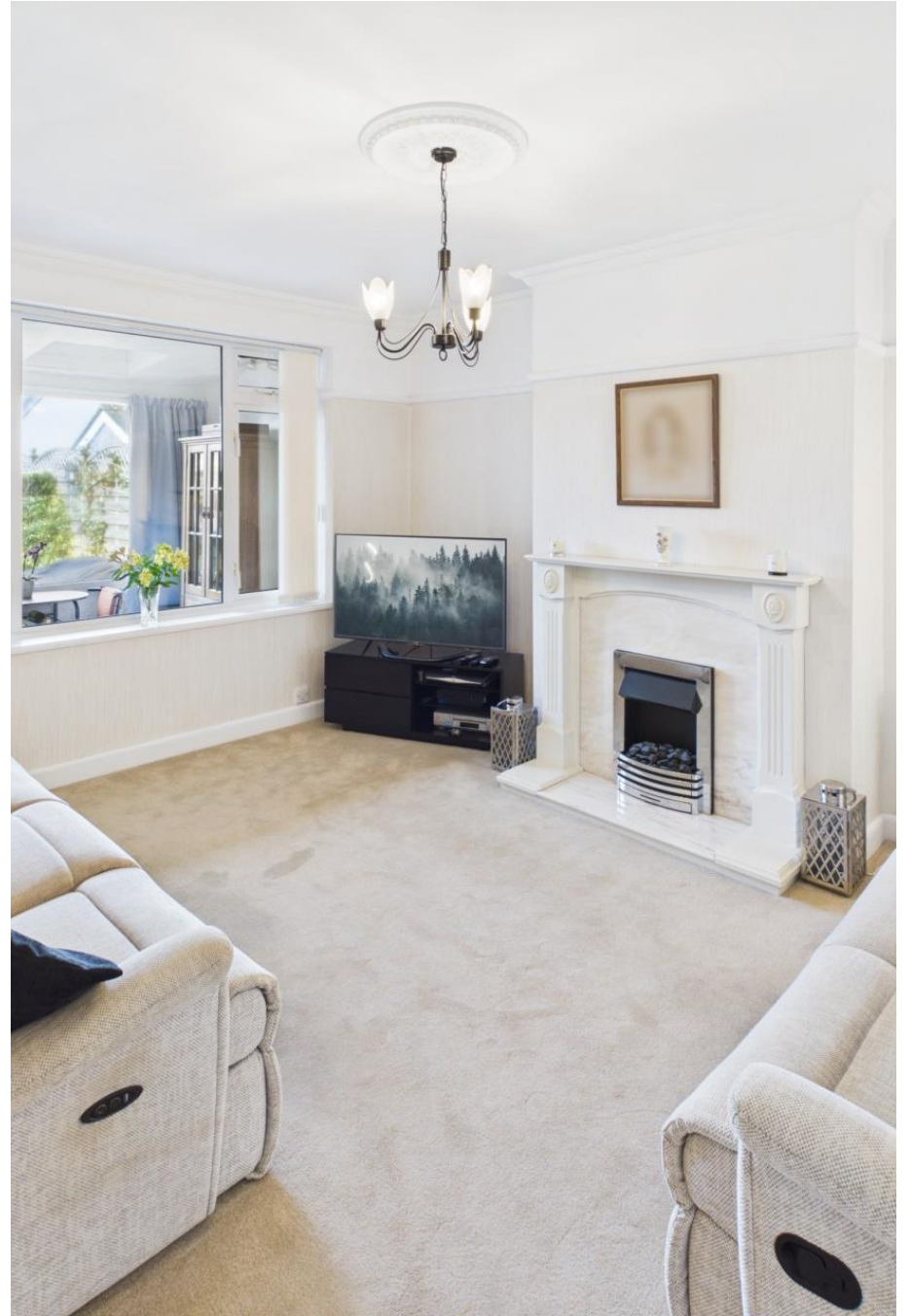
- 3 double bedrooms
- 2 reception rooms
- parking for 3
- excellent location
- Large garden
- Excellent family home













gh
nk





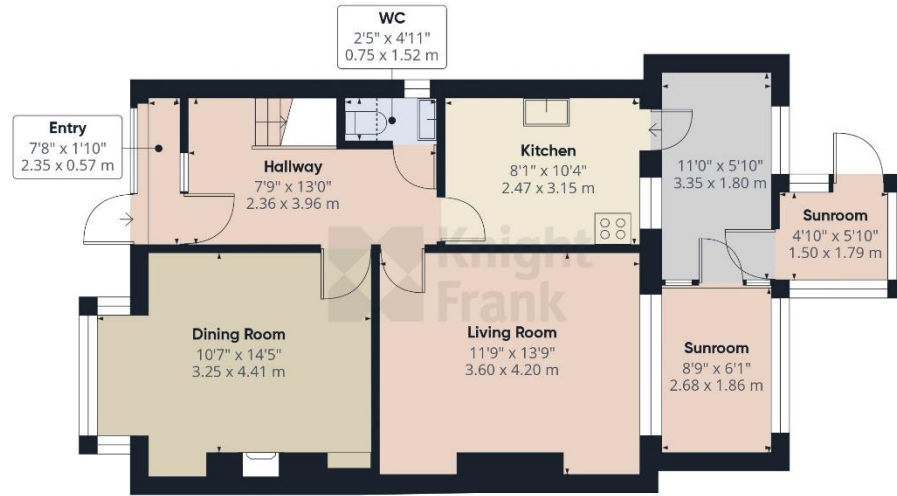












Ground Floor



Floor 1



Approximate total area⁽¹⁾

1126 ft²

104.5 m²

Reduced headroom

4 ft²

0.4 m²

(1) Excluding balconies and terraces

Reduced headroom

..... Below 5 ft/1.5 m

Calculations reference the RICS IPMS 3C standard. Measurements are approximate and not to scale. This floor plan is intended for illustration only.

GIRAFFE360

This plan is for layout guidance only. Not drawn to scale unless stated. Windows and door openings are approximate. Whilst every care is taken in the preparation of this plan, please check all dimensions, shapes and compass bearings before making any decisions reliant upon them.

Services

All mains excluding gas.

Mains drains

electric heating

fibre broadband

fully double glazed

+441534 877977

Knight Frank Jersey

37-39 Halkett Place St Helier, Jersey JE2 4WG

knightfrank.je

Your partners in property

1. Particulars: These particulars are not an offer or contract, nor part of one. You should not rely on statements given by Knight Frank Jersey in the particulars, by word of mouth or in writing (“information”) as being factually accurate about the property, its condition or its value. Neither Knight Frank Jersey nor any joint agent has any authority to make any representations about the property, and accordingly any information given is entirely without responsibility on the part of Knight Frank Jersey. 2. Material Information: Please note that the material information is provided to Knight Frank Jersey by third parties and is provided here as a guide only. While Knight Frank Jersey has taken steps to verify this information, we advise you to confirm the details of any such material information prior to any offer being submitted. If we are informed of changes to this information by the seller or another third party, we will use reasonable endeavours to update this as soon as practical. 3. Photos, Videos etc: The photographs, property videos and virtual viewings etc. show only certain parts of the property as they appeared at the time they were taken. Areas, measurements and distances given are approximate only. 4. Regulations etc: Any reference to alterations to, or use of, any part of the property does not mean that any necessary planning, building regulations or other consent has been obtained. A buyer must find out by inspection or in other ways that these matters have been properly dealt with and that all information is correct. 5. Fixtures and fittings: A list of the fitted carpets, curtains, light fittings and other items fixed to the property which are included in the sale (or may be available by separate negotiation) will be provided by the Seller’s Lawyer. Particulars dated 30/03/2026. All information is correct at the time of going to print.

