

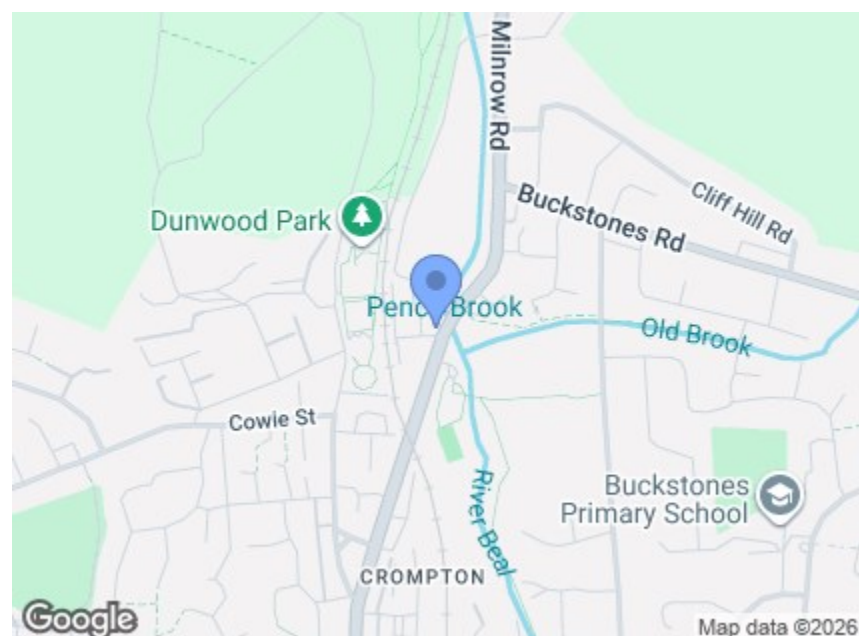
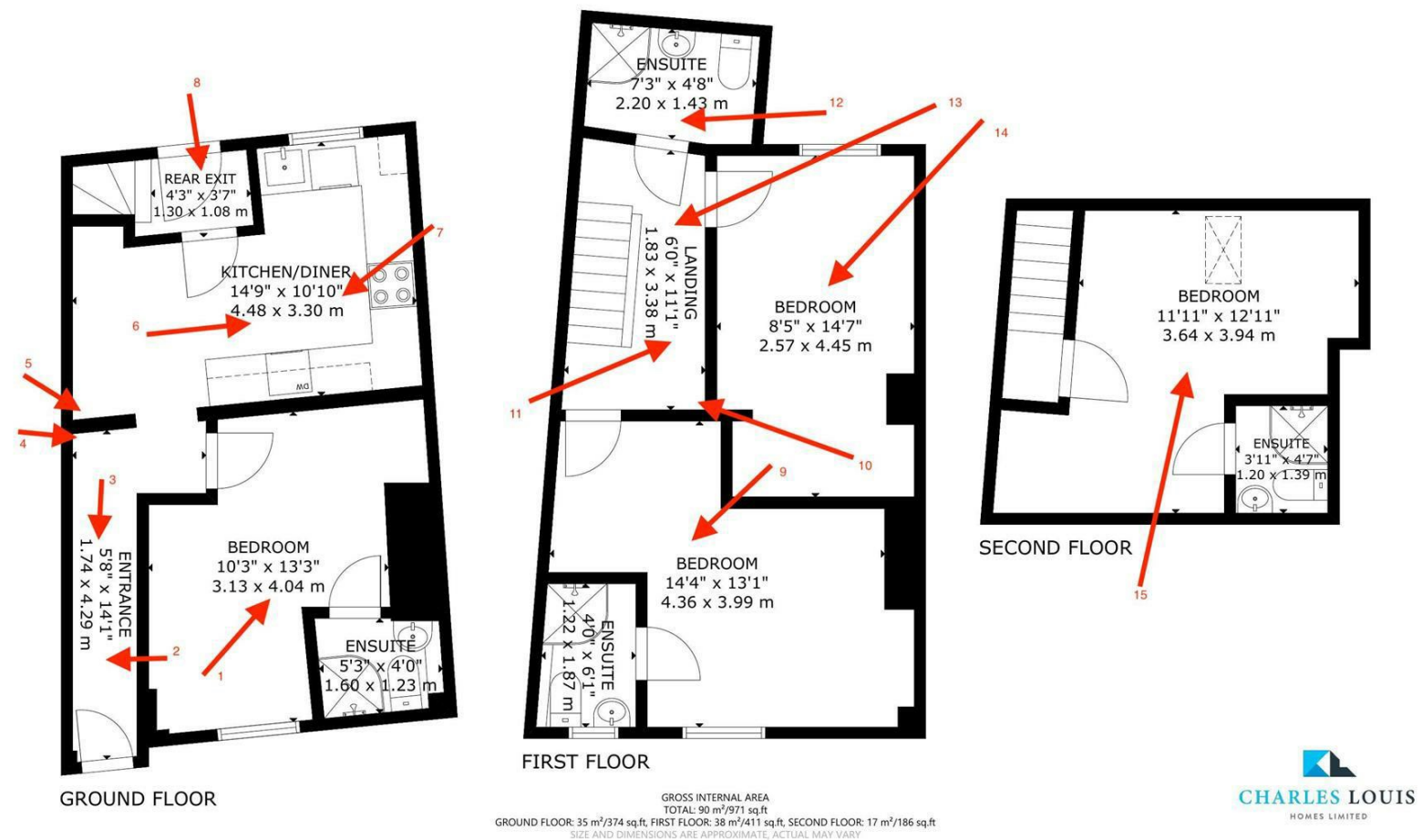


Charles Louis Homes Ltd
4 Bolton Street
Ramsbottom
Bury
BLO 9HX

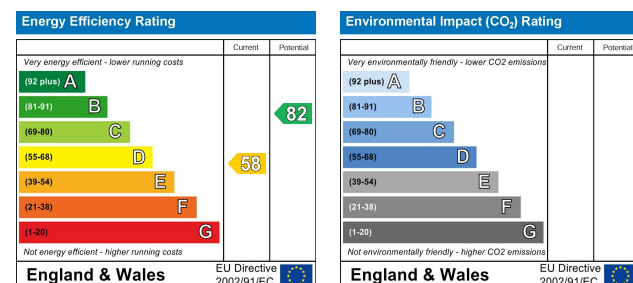
CHARLES LOUIS

HOMES LIMITED

E propertyenquiries@charleslouis.co.uk
T 0161 959 0166
www.charleslouishomes.co.uk



Directions



20 Bridge Street
Shaw, Oldham, OL2 8BG
£600 Per month



- Beautifully converted terraced house operating as a 4-bedroom HMO
- Fully equipped communal kitchen & dining area
- Excellent transport links – immediate access to the Metrolink tram
- Ideal for professionals and commuters
- All bedrooms feature private ensuite (toilet, sink, and shower cubicle)
- Quiet and hidden location surrounded by greenery and walking routes
- Bright, modern décor throughout
- Professionally managed by Charles Louis, Ramsbottom

20 Bridge Street

Shaw, Oldham, OL2 8BG

Charles Louis Estates are delighted to present this Single Room within this beautifully converted 4-bedroom HMO terraced house to let, ideally located in the quiet and scenic town of Shaw, Oldham.

This spacious property offers comfortable and modern shared living across three floors, perfect for working professionals or commuters looking for quality accommodation in a peaceful location.

Property Layout & Features

- Ground Floor: Entrance hallway and modern communal kitchen/dining area, fully fitted with appliances and ample cupboard space.
- Four Ensuite Bedrooms distributed across the Ground, First, and Second Floors, each complete with:
 - o Private shower cubicle, sink, and toilet
 - o Quality furnishings and bright interiors
- Well-maintained throughout with neutral décor and modern fittings.

Situated in a hidden, quiet area off the main road, this property combines convenience with tranquillity. Surrounded by lush green areas and scenic walks, residents will enjoy a calm living environment while staying connected to everything Greater Manchester has to offer.

Local amenities include:

- Shops, cafés, and community stores within walking distance
- Nearby leisure and outdoor activities
- Immediate access to the Metrolink Tram Service, providing fast connections across Greater Manchester and into Manchester city centre.

- Beautifully converted terraced house operating as a 4-bedroom HMO
- All bedrooms feature private ensembles (toilet, sink, and shower cubicle)
- Fully equipped communal kitchen & dining area
- Quiet and hidden location surrounded by greenery and walking routes
- Excellent transport links – immediate access to the Metrolink tram
- Bright, modern décor throughout
- Ideal for professionals and commuters
- Professionally managed by Charles Louis Estates, Ramsbottom

Contact 0161 959 0166 for details or to arrange a viewing.

Hall Way

5'8" x 14'0" (1.74 x 4.29)
Secure front door -

Second Floor 1 Bed

11'11" x 12'11" (3.64m x 3.94)
Wardrobe, Chest of Drawers and Bedside Cabinet

En Suite

3'11" x 4'6" (1.20 x 1.39)
Shower Cubicle, Toilet and Pedi stool sink

Communal/Kitchen Dining area

14'8" x 10'9" (4.48 x 3.30)