

Alternative Available



*Wards*

**Price**

**£1,700 PCM**

Fees Apply



Available 10/08/26

**Sherwood Avenue  
Aylesford ME20**

*Wards*

Helping you move forwards



## Main Features

- Town House Set Over Three Floors
- Video Walk About Available
- Alternative Deposit Option Available
- En Suite & Cloakroom
- Rear Garden
- Allocated Off Road Parking



Deposit required is £1,961.54  
Tonbridge and Malling District - Council Tax Band Tax Band E

Renting a property is a big commitment and we recommend that you visit the local authority website and these websites which offer helpful information and advice about letting

[www.gov.uk/government/publications/how-to-rent](http://www.gov.uk/government/publications/how-to-rent)

[www.gov.uk/private-renting](http://www.gov.uk/private-renting)

[www.wardsofkent.co.uk/renting/tenancy-fees-individuals/](http://www.wardsofkent.co.uk/renting/tenancy-fees-individuals/)

[www.gov.uk/green-deal-energy-saving-measures](http://www.gov.uk/green-deal-energy-saving-measures)

Call Maidstone 01622 675064 ■ [wardsofkent.co.uk](http://wardsofkent.co.uk)

IMPORTANT INFORMATION: Please contact our Lettings Team who will confirm the total costs involved in renting this property. For clarification, we wish to inform the prospective tenant that we have prepared these details as a general guide. The agent has not carried out a detailed survey nor tested the services, appliances, or specific fittings (unless otherwise stated), and no warranty can be given as to their condition. All room measurements are taken at floor level. We strongly recommend that all the information which we provide about the property is verified by yourself and your advisers. The contents of this publication are © Wards, 2015. Wards is a trading name of Arun Estates Limited Registered in England No. 2597969

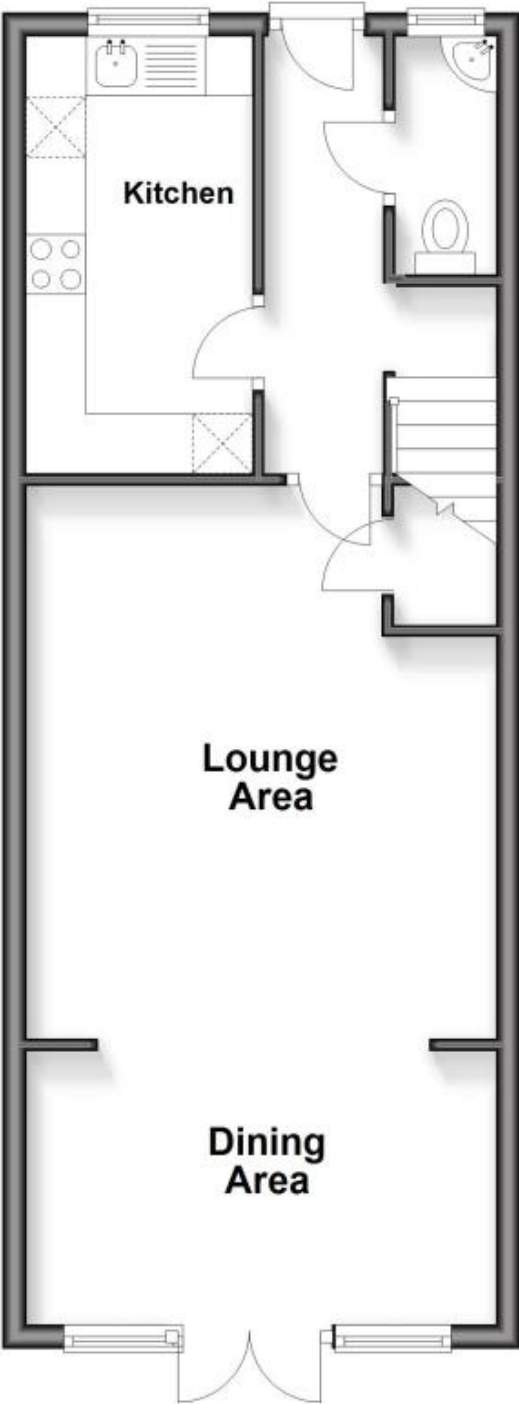
## Accommodation

- Entrance Hallway
- Kitchen 3.67x1.89
- Lounge 4.66x4
- Dining Area 4.00x2.31
- Cloakroom
- Stairs & First Landing
- Bedroom 2 4.00x3.13
- Bedroom 3 4.00x3.24
- Bathroom
- Stairs & 2nd Landing

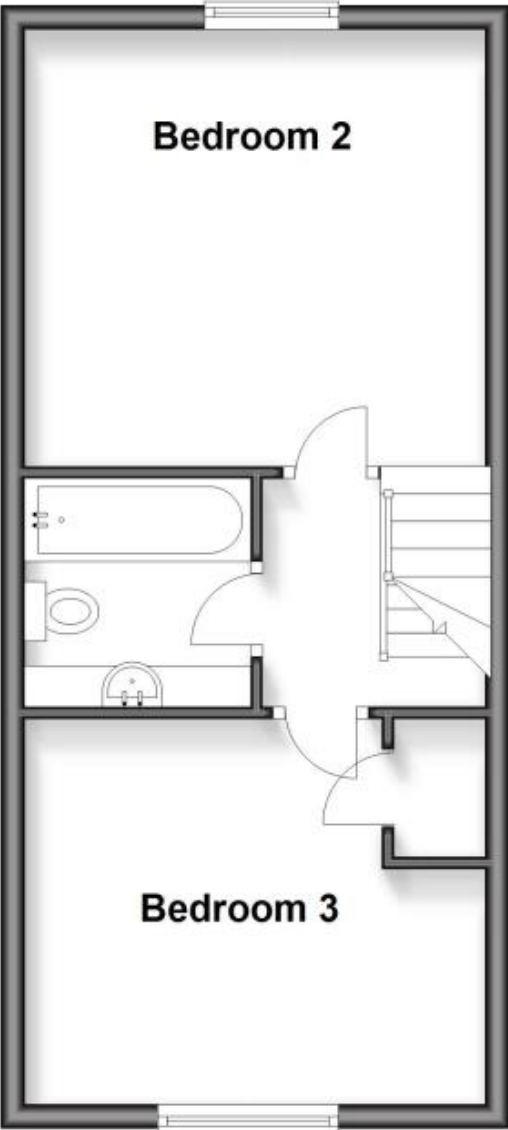
- Bedroom 1 6.78x4.00
- En Suite
- Walk In Wardrobe
- Rear Garden
- Allocated Parking



**Ground Floor**



**First Floor**



**Second Floor**

