



Connells

Cherry Bell Turners Hill Road
Crawley Down

Cherry Bell Turners Hill Road Crawley Down RH10 4HA

for sale guide price
£525,000-£550,000



Property Description

If you're in search of a property that offers flexible accommodation now and, in the future, look no further. This charming chalet bungalow boasts a spacious ground floor, providing ample room for both sleeping and entertaining. At the front, you'll find a double bedroom and a living room, complemented by a shower room situated to the rear. In addition, there is a well-equipped kitchen/breakfast room with some integrated appliances and a conservatory that opens to a private garden flourishing with mature plants and shrubs.

Moving upstairs, you'll discover two additional bedrooms and a bathroom, all situated adjacent to a bright and airy landing area. The front and side of the property offer ample parking, including a garage.

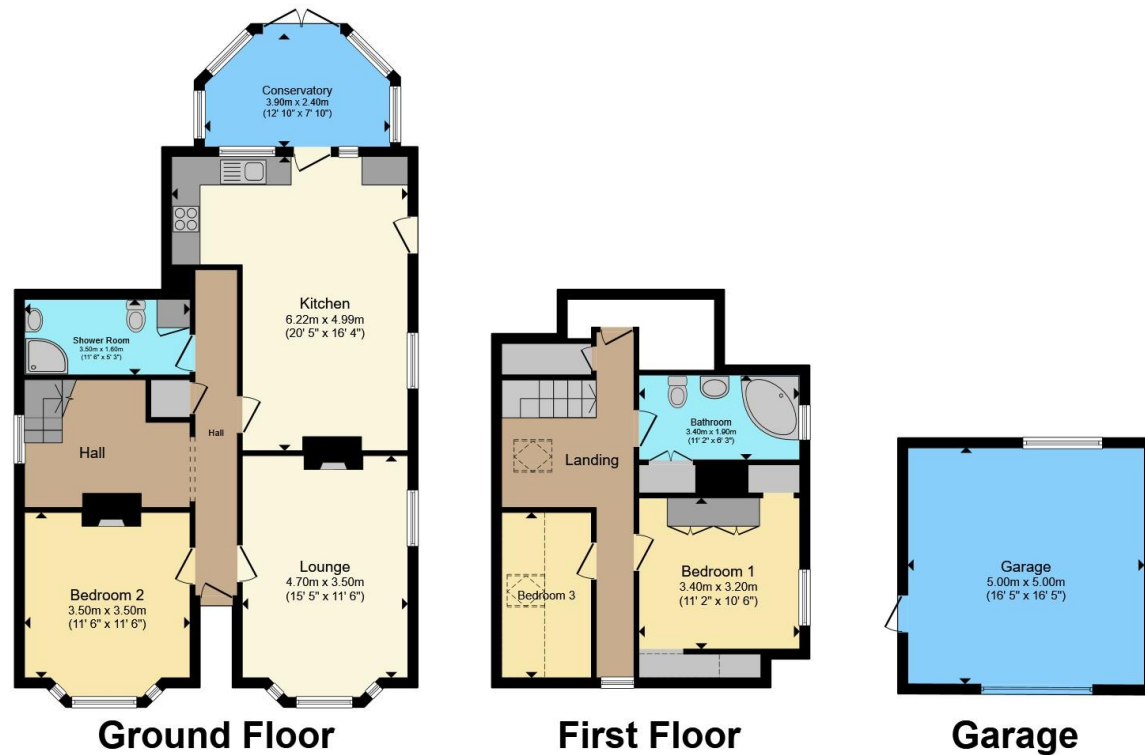
To truly grasp the versatility of this property, it must be seen in person.











Total floor area 156.1 m² (1,680 sq.ft.) approx

This floor plan is for illustrative purposes only. It is not drawn to scale. Any measurements, floor areas (including any total floor area), openings and orientation are approximate. No details are guaranteed, they cannot be relied upon for any purpose and they do not form part of any agreement. No liability is taken for any error, omission or misstatement. A party must rely upon its own inspection(s). Powered by www.propertybox.io



To view this property please contact Connells on

T 01342 717 727
E cophorne@connells.co.uk

4 Copthorne Bank
 COPTHORNE RH10 3QX

EPC Rating: E Council Tax
 Band: E

Tenure: Freehold

view this property online connells.co.uk/Property/COP404428



1. MONEY LAUNDERING REGULATIONS Intending purchasers will be asked to produce identification documentation at a later stage and we would ask for your co-operation in order that there will be no delay in agreeing the sale. 2. These particulars do not constitute part or all of an offer or contract. 3. The measurements indicated are supplied for guidance only and as such must be considered incorrect. Potential buyers are advised to recheck measurements before committing to any expense. 4. We have not tested any apparatus, equipment, fixtures, fittings or services and it is in the buyers interest to check the working condition of any appliances.

Connells Residential is registered in England and Wales under company number 1489613, Registered Office is Cumbria House, 16-20 Hockliffe Street, Leighton Buzzard, Bedfordshire, LU7 1GN. VAT Registration Number is 500 2481 05.

See all our properties at www.connells.co.uk | www.rightmove.co.uk | www.zoopla.co.uk

Property Ref: COP404428 - 0002