

Buy. Sell. Rent. Let.



Hampstead Park, Scartho Top, Grimsby



When it comes to  
property it must be

  
lovelle



£145,000



**\*\*NO CHAIN\*\*** A well presented two-bedroom semi-detached house for sale on Scartho Top, Grimsby, offering a good-sized lounge, kitchen-diner opening to a low-maintenance garden, off-street parking, uPVC double glazing and gas central heating, in a popular residential area with good transport links and no onward chain.

### Key Features

- Semi-detached house
- Two bedrooms
- Lounge
- Kitchen/Diner
- Family Bathroom
- uPVC DG & GCH
- EPC rating C
- Tenure: Freehold





Lovelle offer to market this two-bedroom semi-detached house with no forward chain, providing an attractive opportunity for first-time buyers and couples seeking a well-located home in the Scartho Top area of Grimsby.

The property is approached via an entrance porch, leading into a lounge with a fire surround and stairs rising to the first floor. The ground floor also features a practical kitchen with fitted units, oven and hob, sink and plumbing for a washer. There is space for dining, and doors open directly onto the conservatory which opens onto the garden, creating a convenient layout for day-to-day living. Upstairs, there are two double bedrooms and a bathroom fitted with a shower over bath, sink and WC.

Outside, the house benefits from a driveway and a low maintenance garden, offering usable outdoor space without extensive upkeep. The home also includes uPVC double glazing and gas central heating.

Scartho Top is a popular residential area within Grimsby, well placed for a range of local amenities. Nearby, Scartho village provides shops, cafes, healthcare facilities including Diana, Princess of Wales Hospital and everyday services.

The location is convenient for nearby schools, with a selection of primary and secondary education providers in the wider Scartho and Grimsby area, making this setting suitable for buyers looking for local schooling options.

Public transport links are accessible, with regular bus services running from Scartho and surrounding roads into Grimsby town centre, Cleethorpes and other local destinations. From Grimsby Town railway station, services run to destinations including Manchester and Newark, with connections onwards to London and other major cities, providing options for commuting or longer-distance travel.

For leisure and outdoor space, residents can access local parks and open areas in and around Scartho and Grimsby, while Cleethorpes seafront is within driving distance, offering a range of coastal walks, cafes and recreational facilities.

This two-bedroom semi-detached house, for sale with no chain, combines practical accommodation, off-street parking and a low maintenance garden in a setting convenient for local amenities, schools and transport links, making it a suitable prospect for first-time buyers and couples looking to establish a home in this part of Grimsby.

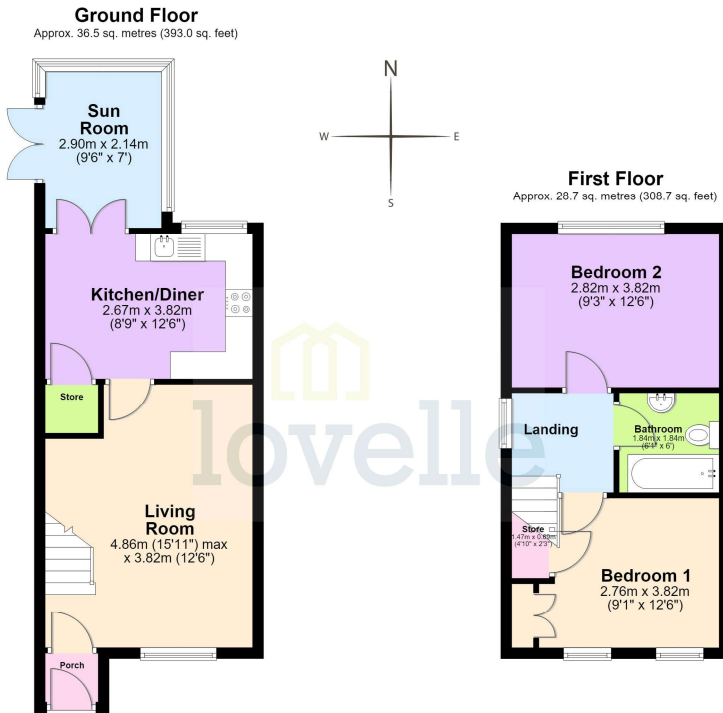
## Disclaimer

We endeavour to make our sales particulars accurate and reliable, however, they do not constitute or form part of an offer or any contract and none is to be relied upon as statements of representation or fact. Any services, systems and appliances listed in this specification have not been tested by us and no guarantee as to their operating ability or efficiency is given. All measurements have been taken as a guide to prospective buyers only, and are not precise. If you require clarification or further information on any points, please contact us, especially if you are travelling some distance to view.

## Mobile and broadband

It is advised that prospective purchasers visit [checker.ofcom.org.uk](http://checker.ofcom.org.uk) in order to review available wifi speeds and mobile connectivity at the property.





Total area: approx. 65.2 sq. metres (701.6 sq. feet)

The provided floor plan is intended for general informational purposes only and may not accurately represent the exact dimensions, layout, or features of the property. The floor plan should not be relied upon for making decisions about purchasing, renting, or modifying the property. Actual measurements and features may vary. It is recommended that interested parties conduct a physical inspection of the property to verify the accuracy of the floor plan and obtain specific information about the property's condition, amenities, and any other relevant details.  
Plan produced using PlanUp.

When it comes to **property**  
it must be

  
**lovelle**

01472 251918

grimsby@lovelle.co.uk