



ESTATE AGENTS

[www.cwestateagents.co.uk](http://www.cwestateagents.co.uk)



## Dierden Street, Winsford CW7 3DL

Offers in excess of £160,000



01606 514 152 | [info@cwestateagents.co.uk](mailto:info@cwestateagents.co.uk)  
@CWestateAgent | @CWestateAgents

# Dierden Street

, Winsford, CW7 3DL

Offers in excess of £160,000



## Hallway

15'1" x 3'4" (4.620m x 1.031m)

## Lounge

11'9" x 10'2" (3.583m x 3.103m)

## Dining Area

12'5" x 10'10" (3.798m x 3.325m)

## Kitchen

10'3" x 8'7" (3.133m x 2.621m)

## Study

8'5" x 6'11" (2.571m x 2.130m)

## Utility Room

8'8" x 7'10" (2.648m x 2.401m)

## Landing

12'4" x 5'4" (3.773m x 1.633m)

## Bedroom One

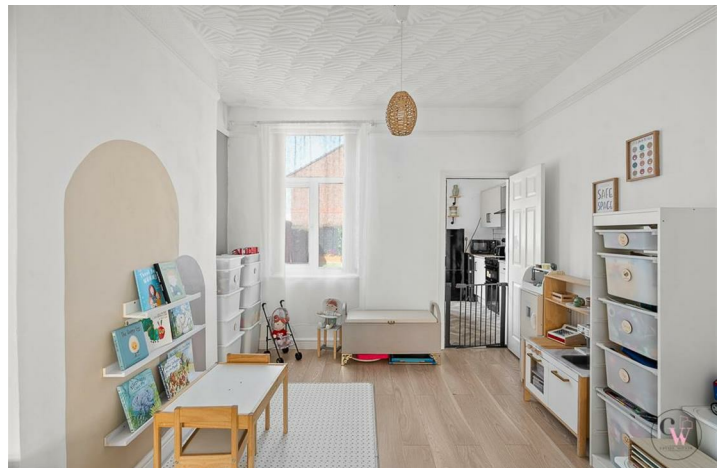
14'0" x 12'9" (4.287m x 3.891m)

## Bedroom Two

12'11" x 8'4" (3.958m x 2.557m)

## Externally

Paved patio area with artificial grass and contemporary slat fencing, access to the front via gate.



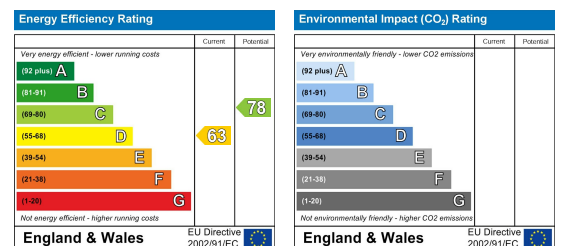
## Floor Plan



## Viewing

Please contact us on 01606 514 152 if you wish to arrange a viewing appointment for this property or require further information.

## Energy Efficiency Graph



These particulars, whilst believed to be accurate are set out as a general outline only for guidance and do not constitute any part of an offer or contract. Intending purchasers should not rely on them as statements of representation of fact, but must satisfy themselves by inspection or otherwise as to their accuracy. No person in this firm's employment has the authority to make or give any representation or warranty in respect of the property.

01606 514 152 
 info@cwestateagents.co.uk  
 @CWestateAgent 
 @CWestateAgents