



Guide Price
£325,000

Freehold

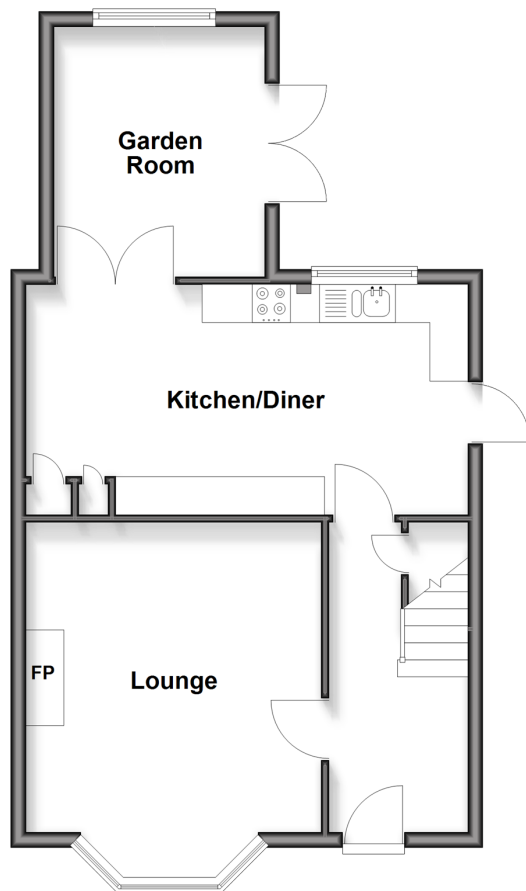
4x  1x  1x 

**Gloucester Road,
Maidstone, Kent ME15**

Wards
Helping you move forwards

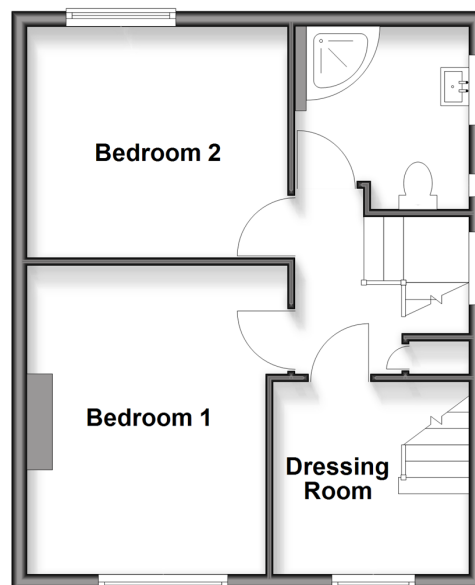
Ground Floor

Approx. 51.4 sq. metres (552.9 sq. feet)



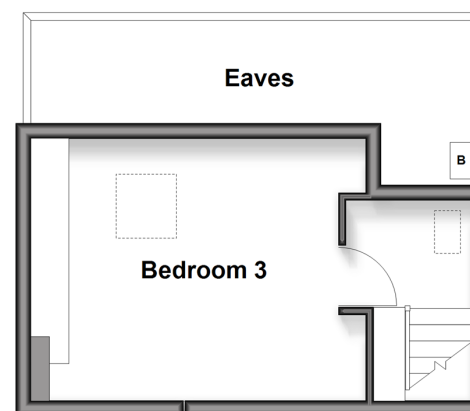
First Floor

Approx. 41.7 sq. metres (448.5 sq. feet)



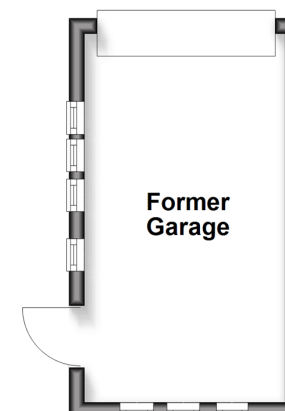
Second Floor

Approx. 18.8 sq. metres (202.7 sq. feet)



Outbuilding

Approx. 12.8 sq. metres (137.4 sq. feet)



Accommodation

GROUND FLOOR

Hallway

Lounge: 16'3 x 12'6 (4.96m x 3.81m)

Kitchen/Diner: 18'8 x 10'5 (5.69m x 3.18m)

Garden Room: 10'9 x 9'0 (3.28m x 2.75m)

FIRST FLOOR

Landing

Bedroom 1: 11'2 x 10'8 (3.41m x 3.25m)

Bedroom 2: 13'9 x 10'3 (4.19m x 3.13m)

Dressing Room: 8'3 x 8'2 (2.52m x 2.49m)

Shower Room

SECOND FLOOR

Landing

Bedroom 4: 12'9 x 11'7 (3.89m x 3.53m)

OUTBUILDING

Former Garage

OUTSIDE

Rear Garden

Front Garden

Driveway



Main features

- Chain free
- Garage and driveway
- Nearby to local schools, shops and amenities
- Spacious throughout with room to entertain
- Generous garden, perfect for growing families



Nearest Schools

Primary Schools: Greenfields Community Primary 0.1 miles, Molehill Copse Primary 0.3 miles, Oak Trees Community School 0.4 miles

Secondary Schools: Five Acre Wood School 0.7 miles,



Transport Information

Train Stations: Maidstone West 1.7 miles, Bearsted 1.9 miles, Maidstone East 1.9 miles



Address

Gloucester Road, Maidstone, Kent ME15



Directions

For directions to this property please contact us.



Call Maidstone Branch 01622 683737 ■ wardsofkent.co.uk



■ Legal advice should be taken to verify fixtures/fittings, planning, alterations and/or lease details ■ Appliances & services are untested, dimensions are approximate and floor plans are not to scale



13159178/20260115/SS1/TB