



Tel: 02088639718
557 Pinner Road, Harrow, UK, HA2 6EQ
moses@mayfords.com

FALCON LODGE, ADMIRAL WALK, W9

£610,000

- Elevator in Building
- En-suite
- Secure Car parking

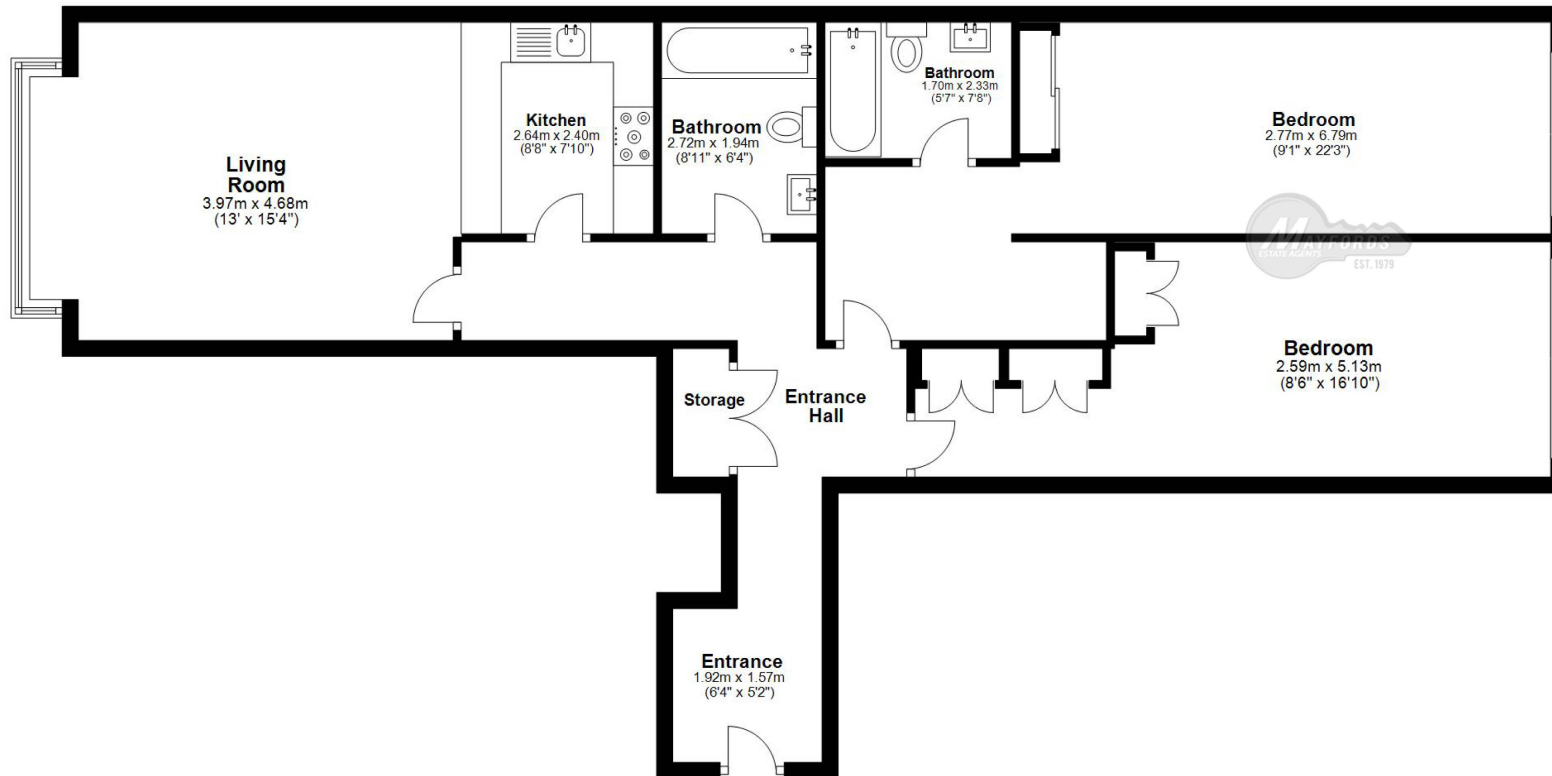




A spacious apartment placed on the first floor of the sought after Falcon Lodge development located in the highly enviable area of Maida Vale w9. The property comprises of a master bedroom with an en-suite, one further double bedroom, a family bathroom, bright and airy open plan kitchen and reception room with integrated appliances, gas heating and an underground parking space for one car. The development offers porter service, secure gated community, private underground parking, beautifully laid out courtyard. This fantastic development borders Sutherland avenue and Harbour clubs Nothing Hill. Westbourne park station is located 0.5 miles away, providing easy access to the city.







Plan produce for MAYFORDS Estate Agent

TOTAL FLOOR AREA	Sq. meters	95.8
	Sq. feet	1031.3



Energy performance certificate (EPC)

Flat 7 Falcon Lodge Admiral Walk LONDON W9 3TA	Energy rating B	Valid until: 24 January 2034
		Certificate number: 5134-6029-8300-0315-4222

Property type	Mid-floor flat
Total floor area	104 square metres

Rules on letting this property

Properties can be let if they have an energy rating from A to E.

You can read [guidance for landlords on the regulations and exemptions](https://www.gov.uk/guidance/domestic-private-rented-property-minimum-energy-efficiency-standard-landlord-guidance) (<https://www.gov.uk/guidance/domestic-private-rented-property-minimum-energy-efficiency-standard-landlord-guidance>).

Energy rating and score

This property's energy rating is B. It has the potential to be B.

[See how to improve this property's energy efficiency.](#)

The graph shows this property's current and potential energy rating.

Properties get a rating from A (best) to G (worst) and a score. The better the rating and score, the lower your energy bills are likely to be.

For properties in England and Wales:

the average energy rating is D
the average energy score is 60

Score	Energy rating	Current	Potential
92+	A		
81-91	B	82 B	82 B
69-80	C		
55-68	D		
39-54	E		
21-38	F		
1-20	G		

Breakdown of property's energy performance

Features in this property

Features get a rating from very good to very poor, based on how energy efficient they are. Ratings are not based on how well features work or their condition.

Assumed ratings are based on the property's age and type. They are used for features the assessor could not inspect.

Feature	Description	Rating
Wall	Cavity wall, as built, insulated (assumed)	Good
Window	Fully double glazed	Average
Main heating	Boiler and radiators, mains gas	Good
Main heating control	Programmer and room thermostat	Average
Hot water	From main system	Good
Lighting	Low energy lighting in all fixed outlets	Very good
Roof	(another dwelling above)	N/A
Floor	(another dwelling below)	N/A
Secondary heating	None	N/A

Primary energy use

The primary energy use for this property per year is 92 kilowatt hours per square metre (kWh/m²).

How this affects your energy bills

An average household would need to spend **£777 per year on heating, hot water and lighting** in this property. These costs usually make up the majority of your energy bills.

You could **save £0 per year** if you complete the suggested steps for improving this property's energy rating.

This is **based on average costs in 2024** when this EPC was created. People living at the property may use different amounts of energy for heating, hot water and lighting.

Heating this property

Estimated energy needed in this property is:

- 2,201 kWh per year for heating
- 2,817 kWh per year for hot water

Impact on the environment

This property's environmental impact rating is B. It has the potential to be B.

Properties get a rating from A (best) to G (worst) on how much carbon dioxide (CO₂) they produce each year.

Carbon emissions

An average household produces 6 tonnes of CO₂

This property produces 1.7 tonnes of CO₂

This property's potential production 1.7 tonnes of CO₂

You could improve this property's CO₂ emissions by making the suggested changes. This will help to protect the environment.

These ratings are based on assumptions about average occupancy and energy use. People living at the property may use different amounts of energy.

Changes you could make

The assessor did not make any recommendations for this property.

Help paying for energy improvements

You might be able to get a grant from the [Boiler Upgrade Scheme \(https://www.gov.uk/apply-boiler-upgrade-scheme\)](https://www.gov.uk/apply-boiler-upgrade-scheme). This will help you buy a more efficient, low carbon heating system for this property.

More ways to save energy

Find ways to save energy in your home by visiting www.gov.uk/improve-energy-efficiency

Who to contact about this certificate

Contacting the assessor

If you're unhappy about your property's energy assessment or certificate, you can complain to the assessor who created it.

Assessor's name	Jake Howarth
Telephone	01495 234 300
Email	epcquery@vibrantenergymatters.co.uk

Contacting the accreditation scheme

If you're still unhappy after contacting the assessor, you should contact the assessor's accreditation scheme.

Accreditation scheme	Elmhurst Energy Systems Ltd
Assessor's ID	EES/021468
Telephone	01455 883 250
Email	enquiries@elmhurstenergy.co.uk

About this assessment

Assessor's declaration	No related party
Date of assessment	25 January 2024
Date of certificate	25 January 2024
Type of assessment	RdSAP