



Whellock Road, London, W4 1DZ

Guide Price £895,000

WHITMAN & CO.

SALES · LETTINGS · COMMERCIAL

- Three bedrooms
- Bathroom and ground floor shower room
- Breakfast room
- Lean to
- Large loft
- Two reception rooms
- Scullery kitchen
- Private garden with rear access

Tenure - Freehold
Local Authority - Ealing
Council Tax - Band G

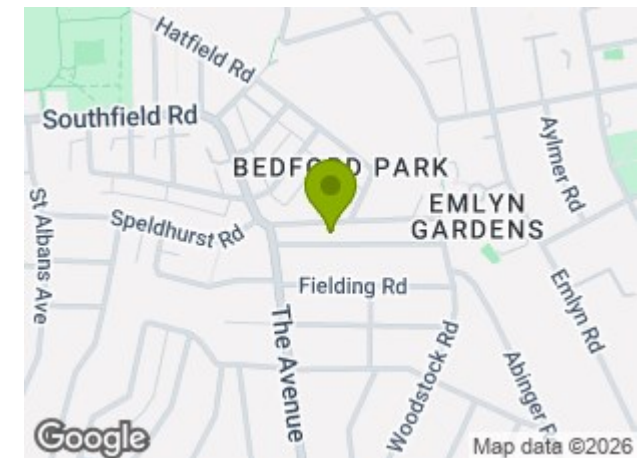
THE PROPERTY

An unmodernised three-bedroom terraced Victorian house offering exceptional scope and ideally located in this sought-after residential street, just north of Bedford Park.

The property includes three bedrooms, a large loft, a bathroom, two reception rooms, a breakfast room, a scullery kitchen, lean to, ground floor shower room, and a private garden with rear access.

Situated within close proximity of Turnham Green Tube Station and local bus routes, as well as the extensive range of shops, bars and restaurants on Chiswick High Road. Also, within the catchment area of Southfield Primary School, an Ofsted outstanding school. Offered with no onward chain.

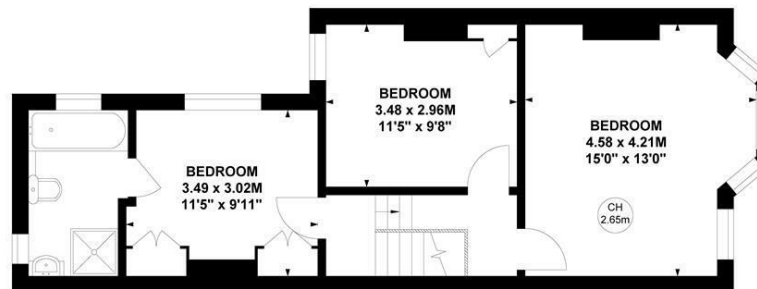
SITUATION



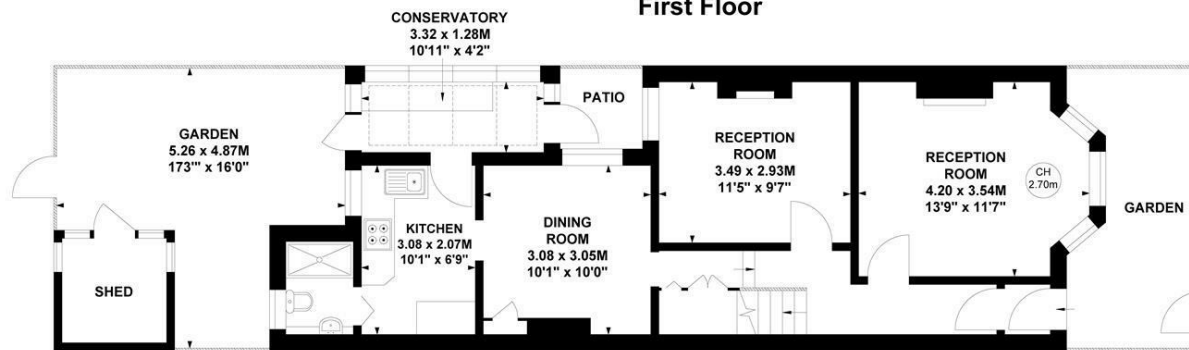
Whellock Road, W4

Approximate gross internal area
108.60 sq m / 1169 sq ft

Key :
CH - Ceiling Height



First Floor



Ground Floor

Not to scale, for guidance only and must not be relied upon as a statement of fact.
All measurements and areas are approximate only