



Upper Street, Hollingbourne, Maidstone, , ME17 1UH

Price £500,000



A stunning three-bedroom end-of-terrace period cottage, originally two separate dwellings cleverly combined many years ago. Spanning just c900 sq ft internally, the property benefits from a large tandem garage, private driveway, and a beautiful rear garden.

Upon entering, you are welcomed into a generous sitting and dining room featuring a striking fireplace as the focal point, beautiful oak flooring, and elegant column radiators. The room is split-level, with the upper section providing ample space for a formal dining table and chairs. To the rear lies a spacious kitchen/breakfast/family room with a striking copper sink and fittings, which opens directly onto the rear patio and garden via a stable door. A separate utility room with WC completes the ground floor.

On the first floor are two double bedrooms and one single. The principal bedroom is particularly impressive, with exquisite exposed beams, an original brick wall, and an attractive fireplace. The second double bedroom enjoys a vaulted ceiling and brick fireplace, while the third bedroom offers built-in wardrobes and is versatile enough to serve as a dressing room or single bedroom. A generous family bathroom with a roll-top bath serves all three rooms.

Outside, the delightful rear garden includes a large patio ideal for entertaining, leading to a raised lawned area surrounded by mature trees, shrubs and hedging that offers excellent privacy. The substantial tandem garage has side access, with convenient pedestrian access from the driveway through to the rear garden. Tenure: Freehold. Council tax band: E. EPC rating: D.

\*The front external photograph has had a car removed from outside using AI



## LOCATION

This exceptional property sits almost opposite to the 16th-century Hollingbourne Manor, once home to the renowned Culpepper family. The charming village of Hollingbourne provides an excellent range of local amenities, including a station café, popular pubs and restaurants, a hairdresser, an osteopath, a primary school, a parish church, plus beautiful countryside parks and walks right on the doorstep. A mainline railway station is within walking distance, with direct services to London Victoria. Maidstone, Kent's county town, is approximately six miles away and reachable in only two stops by train.

## ACCOMMODATION

### Ground Floor

### Sitting Room

### Dining Area

### Kitchen

### Breakfast/Family Room

### Utility/W.C.

### First Floor

### Principal Bedroom

### Bedroom Two

### Bedroom Three

### Family Bathroom

## EXTERNALLY

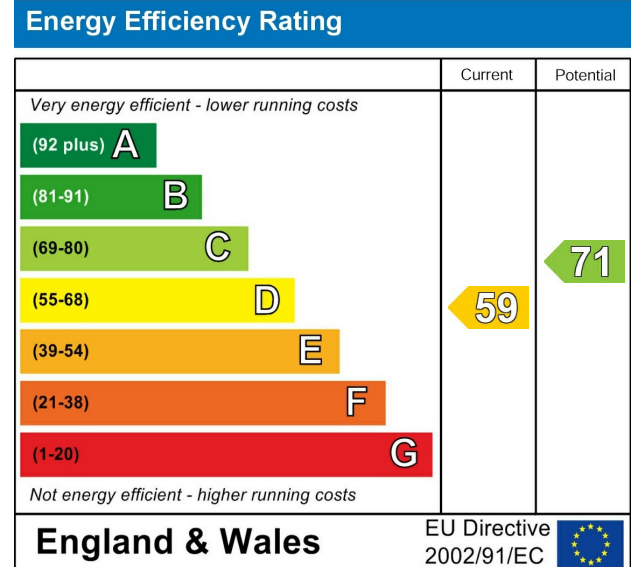
### Driveway

### Tandem Garage

### Rear Garden

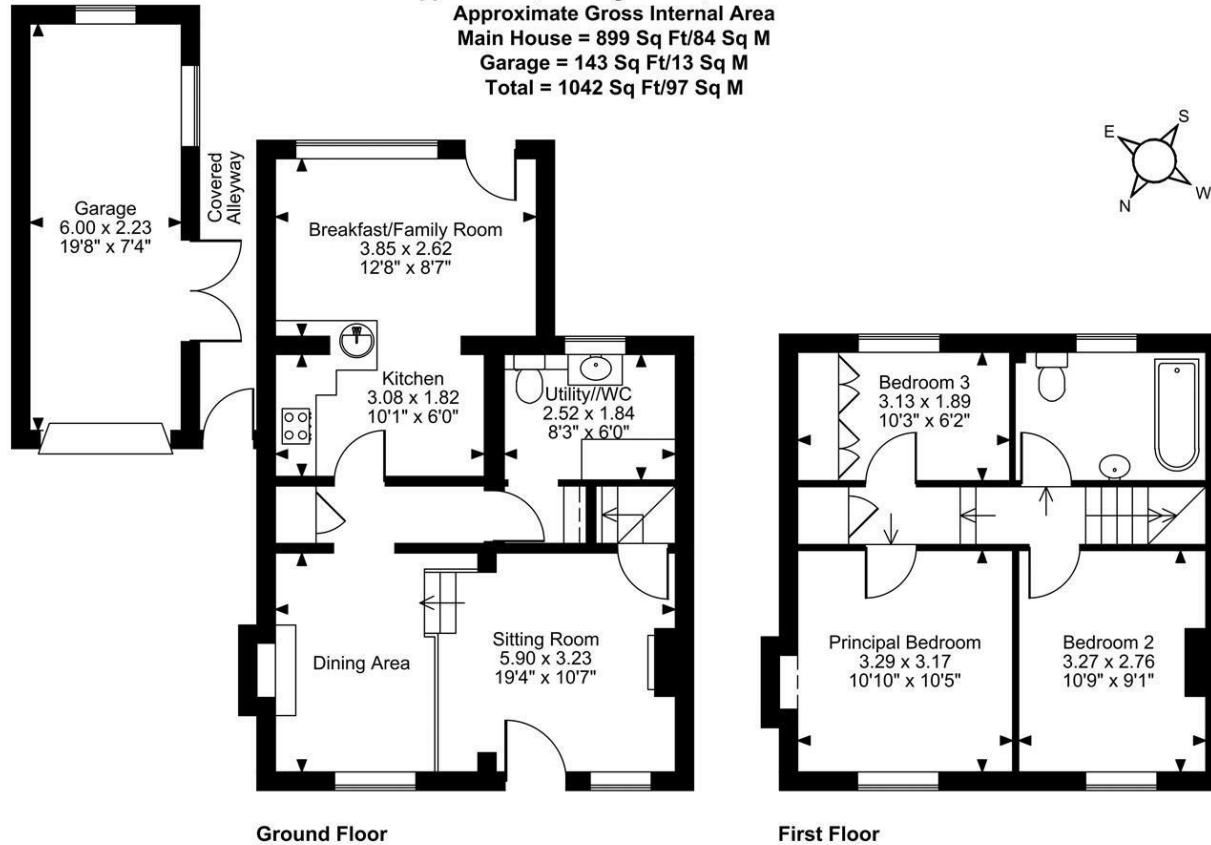
## VIEWING

Strictly by arrangement with the Agent's Bearsted Office, 132 Ashford Road, Bearsted, Maidstone, Kent ME14 4LX. Tel: 01622 739574.



Page & Wells limited for themselves and for the vendors of this property whose agents they are give notice that: 1. These particulars do not constitute any part of, an offer or a contract. 2. All statements contained in these particulars as to this property are made without responsibility on the part of Page & Wells Limited or the Vendor. 3. None of the statements contained in these particulars as to the property is to be relied on as statements or representations of fact. 4. Any intending purchaser must satisfy himself by inspection or otherwise as to the correctness of each of the statements contained in these particulars. 5. The vendor does not make or give, and neither Page & Wells Limited nor any person in their employment has any authority to make or give any representation whatsoever in relation to this property. These particulars are supplied on the understanding that all negotiations are carried out throughout Page & Wells Limited. Properties with a reference prefixes EAA are those which Page & Wells Limited disclose an interest in accordance with the provisions of the Estates Agents Act 1979

Upper Street, Hollingbourne, Maidstone  
 Approximate Gross Internal Area  
 Main House = 899 Sq Ft/84 Sq M  
 Garage = 143 Sq Ft/13 Sq M  
 Total = 1042 Sq Ft/97 Sq M



**FOR ILLUSTRATIVE PURPOSES ONLY - NOT TO SCALE**

The position & size of doors, windows, appliances and other features are approximate only.

□□□□ Denotes restricted head height

© ehouse. Unauthorised reproduction prohibited. Drawing ref. dig/8689399/LCO

