



Vantage Court

551 Old Kent Road, SE1

£2,000 per month
(£461.54 per week)

Vantage Court is a boutique development well connected to central London with frequent main bus routes into London Bridge and the City. South Bermondsey Train Station is moments away and there are a number of large supermarkets, shops and restaurants nearby in addition to the popular Burgess Park.

CHESTERTONS



Vantage Court

551 Old Kent Road, SE1

- Two-bedroom
- One-bathroom
- Open plan kitchen living area
- Balcony
- Leasehold
- Modern



This modern apartment comprises an open plan living space with fully fitted kitchen boasting floor to ceiling windows and access to the South facing balcony with stunning views across the city. The principle bedroom features fitted wardrobes and provides another access point to the balcony. The second double bedroom has fitted wardrobes and an Eastern aspect with views of Canary Wharf. The fully tiled family bathroom is modern and has a three-piece suite.

Minimum Term: 12 months
Deposit Required: £2,307.69
Local Authority: London Borough of Southwark
Council Tax Band: C
EPC Rating: D
Furnished

Score	Energy rating	Current	Potential
92+	A		
81-91	B		
69-80	C		
55-68	D	62 D	62 D
39-54	E		
21-38	F		
1-20	G		

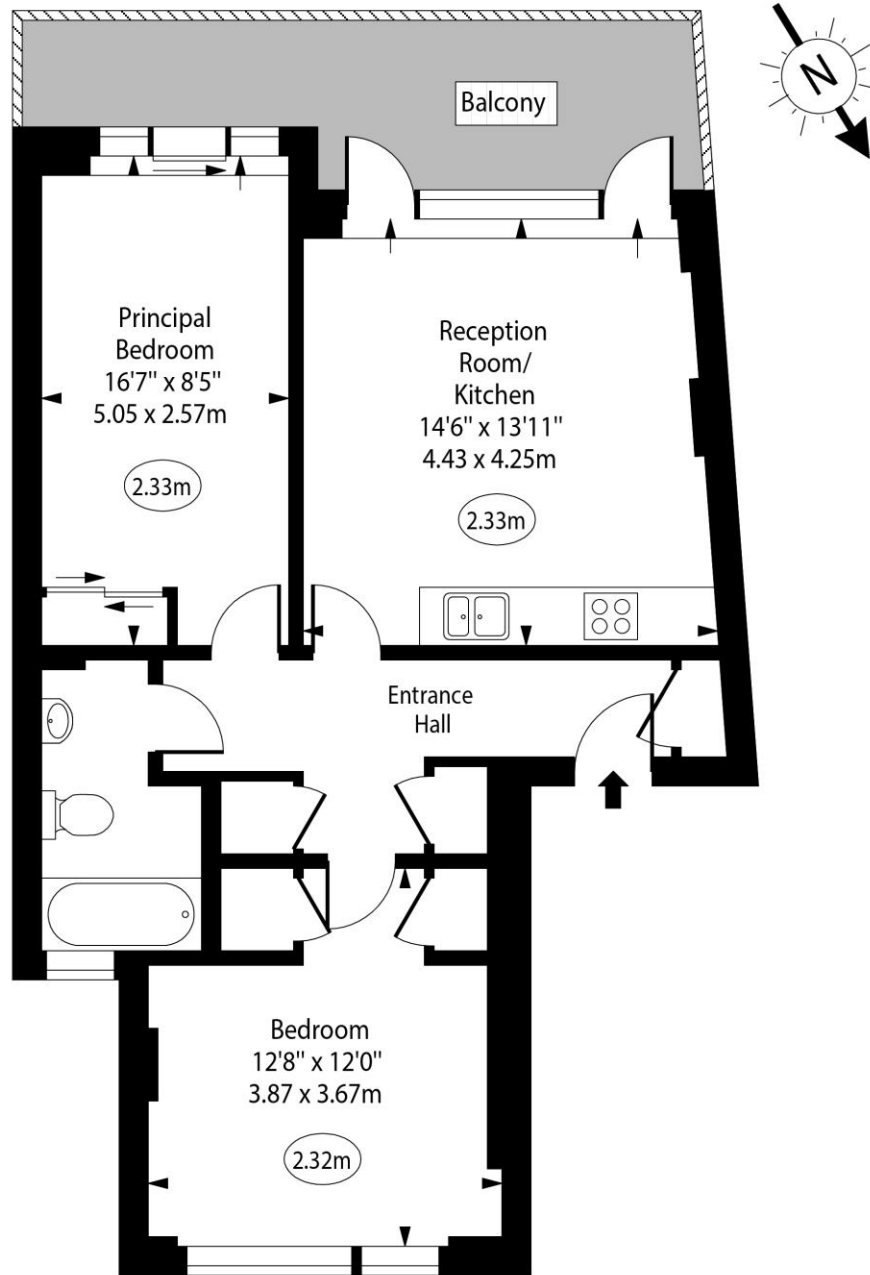
Chestertons Tower Bridge Lettings

220 Tower Bridge Road
 Tower Bridge
 London
 SE1 2UP
towerbridgelettingsusers@chestertons.co.uk
 02073576911
chestertons.co.uk

Additional tenant charges apply (fees apply to non-AST tenancies only)
 Tenancy Agreement Fee: £300
 References per Tenant/Guarantor: £60
 Inventory check (approx. £100 – £250 inc. VAT)
chestertons.co.uk/property-to-rent/applicable-fees

Vantage Court, Old Kent Road, SE1

○ - Ceiling Height



Fourth Floor

Approx Gross Internal Area 650 Sq Ft - 60.39 Sq M

For Illustration Purposes Only - Not To Scale

