



## Hertsmere Road, E14

£550,000

Offered to the market chain free, this well-presented one bedroom apartment is located within the sought after West India Quay development, ideally positioned for Canary Wharf. The property benefits from concierge service, views across London and a lease with over 900 years remaining.

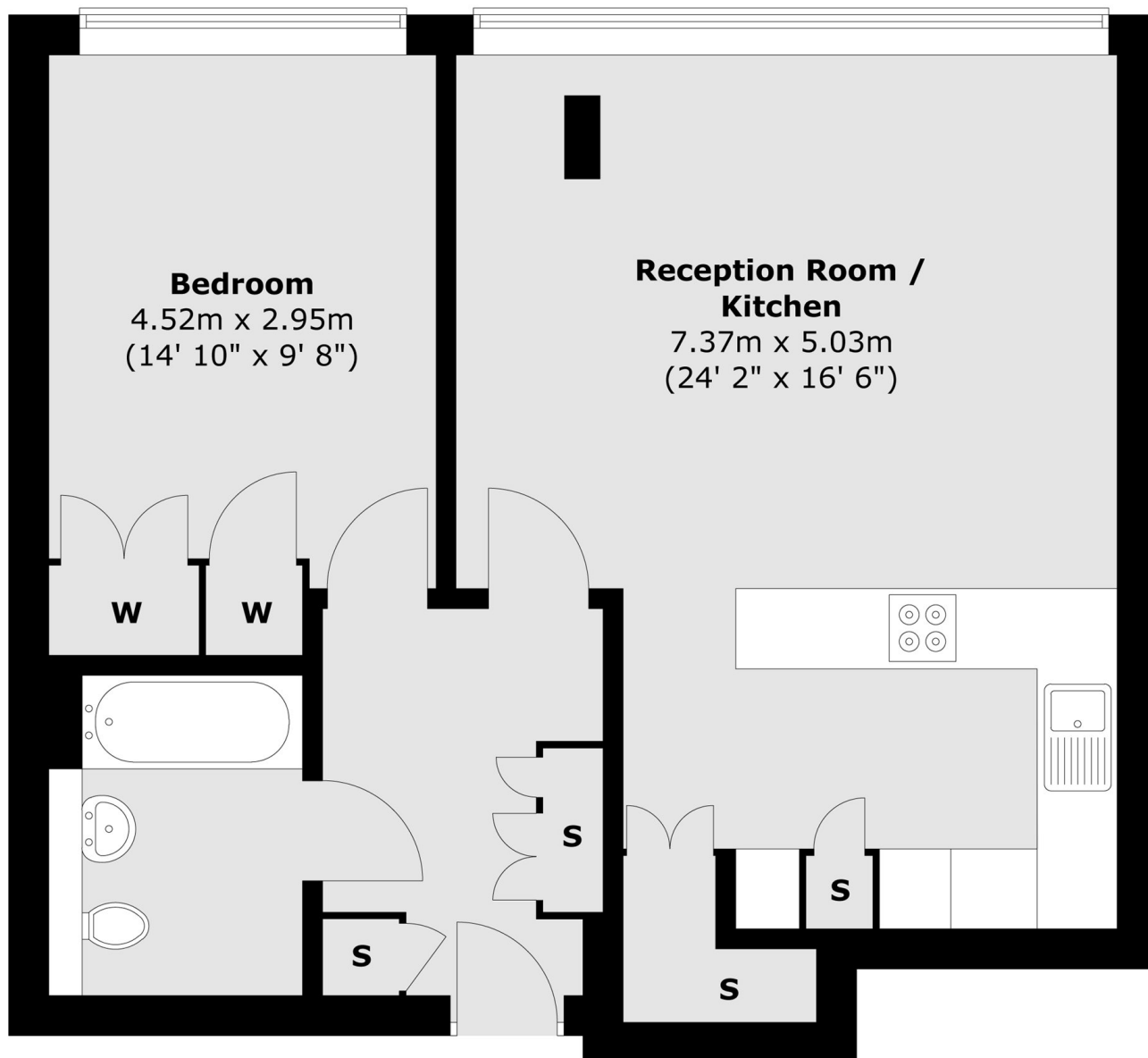
West India Quay is one of the residential developments closest to Canary Wharf, set within the heart of the Docklands. The surrounding area offers a wide selection of bars, restaurants and a cinema complex, while the shops, dining options and leisure facilities of Canary Wharf are also within easy reach.

### Features

- 620 Square Feet
- 29th Floor
- Open Plan Reception
- Concierge Service
- 900+ Year Lease
- Chain Free

# Hertsmere Road, London, E14

## Twenty Ninth Floor



Total area (approx.) : 57.5 sq. m (619 sq. ft)