

BerkeleyShaw

Central Gardens, 19 Benson Street, Liverpool, Merseyside L1 2SS

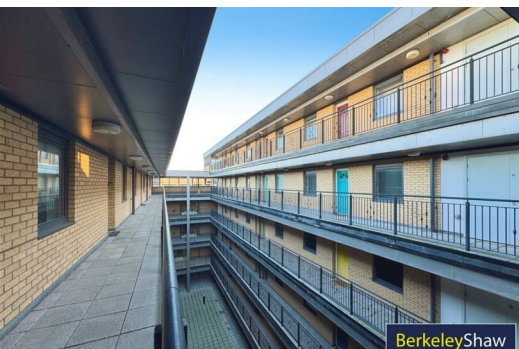
£825 PCM

Welcome to this charming ONE BEDROOM FURNISHED apartment TO LET located in the heart of Central Gardens, Benson Street, Liverpool. This property boasts a open plan lounge kitchen room, perfect for relaxing or entertaining guests. With one spacious bedroom, you'll have a comfortable retreat to unwind after a long day. The apartment features a modern shower room, ideal for your daily routines.

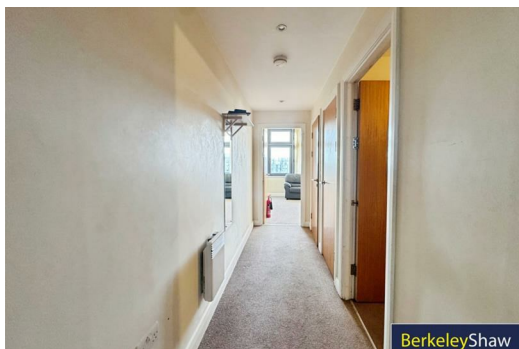
Situated in a desirable area, this apartment offers the convenience of double-glazed windows, ensuring a peaceful atmosphere and energy efficiency. The electric heating system provides warmth during the colder months, keeping you snug and comfortable throughout the year.

Don't miss the opportunity to make this apartment your new home.

Deposit: £825.00
Council Tax Band: A
Minimum Term: 12 Months



BerkeleyShaw



BerkeleyShaw



BerkeleyShaw

Hallway

Entrance door, carpet, electric wall heater

Lounge Kitchen

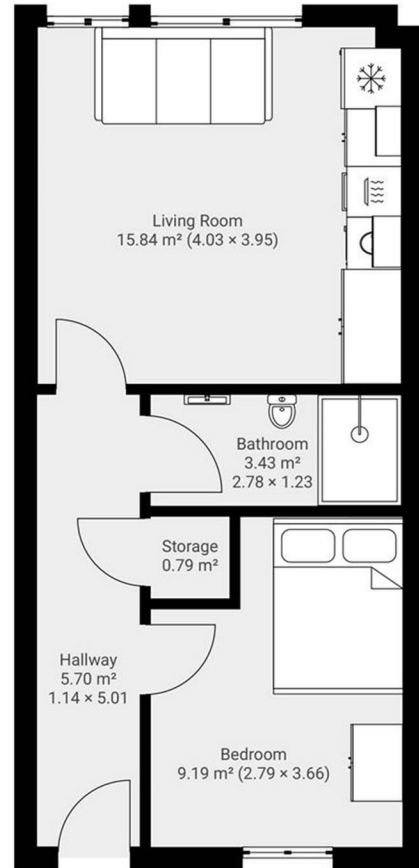
Double glazed windows, electric wall heater, carpet in lounge area tiled floor in kitchen area, kitchen comprises of a range of fitted base and wall units stainless steel sink with mixer taps, electric oven and hob, extractor hood, washing machine, fridge/ freezer, furnishings include 2 seater sofa, coffee table, dining table and 2 chairs

Bedroom

Double glazed windows, carpet, electric wall heater, furnishings include wardrobe, Bed and mattress

Shower Room

Part tiled walls, tiled floor, electric towel rail, Shower with glass doors, sink and low level w.c.

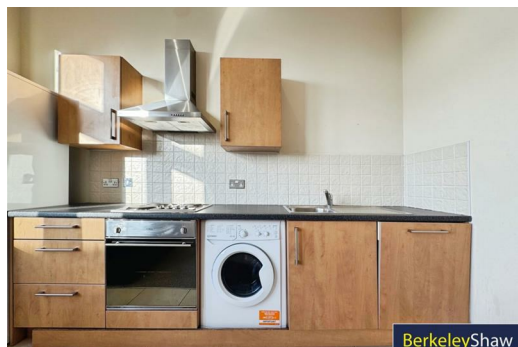


Energy Efficiency Rating		
	Current	Potential
Very energy efficient - lower running costs		
(92 plus) A		
(81-91) B		
(69-80) C		
(55-68) D		
(39-54) E		
(21-38) F		
(1-20) G		
Not energy efficient - higher running costs		
	73	82
England & Wales	EU Directive 2002/91/EC	

Environmental Impact (CO ₂) Rating		
	Current	Potential
Very environmentally friendly - lower CO ₂ emissions		
(92 plus) A		
(81-91) B		
(69-80) C		
(55-68) D		
(39-54) E		
(21-38) F		
(1-20) G		
Not environmentally friendly - higher CO ₂ emissions		
England & Wales	EU Directive 2002/91/EC	



BerkeleyShaw



BerkeleyShaw



BerkeleyShaw



Berkeley Shaw Estate Agents Limited.
Company No. 0784754

Berkeley Shaw Real Estate Limited.
Company No. 05206927

