



## Riversdale Road

Thames Ditton, KT7 0QN

Guide Price

£1,550,000

A rare opportunity to acquire this beautifully positioned four double bedroom detached chalet-style home, set on a highly desirable road within Thames Ditton Village, enjoying direct river frontage and private mooring. Offering picturesque views across the River Thames, this charming home combines generous living space with an enviable setting. To the ground floor 2 double bedrooms, family bathroom and kitchen/breakfast room with direct access to the garden. The reception room features patio doors that open onto the riverside garden. To the first floor are 2 further double bedrooms and an additional bathroom. Also an impressive principal bedroom with patio doors leading to a private balcony with stunning river views. This property also benefit from an integrated garage providing excellent storage. Located within walking distance of Thames Ditton village, local amenities, and the station.

- Detached Chalet Style Home
- Private Mooring
- 2 Bathrooms
- Off Street parking
- Prime Riverside Location
- 4 Double Bedrooms
- Integrated Garage
- Walking distance to village and station

# Floor Plan

## Riversdale Road

Approximate Gross Internal Area = 171.7 sq m / 1848 sq ft  
(Including Garage / Excluding Eaves)

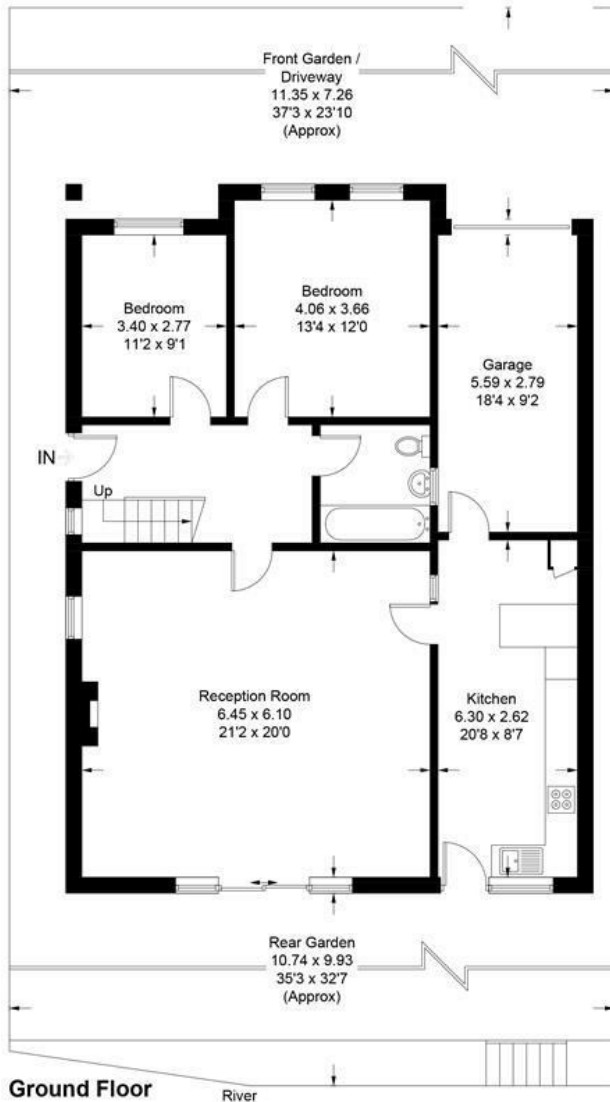
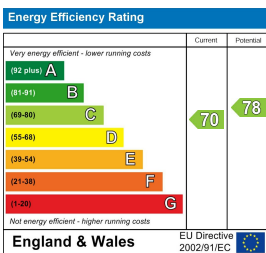


Illustration for identification purposes only, measurements are approximate, not to scale. Fourlabs.co © (ID1306394)

## Energy Efficiency Graph



These particulars, whilst believed to be accurate are set out as a general outline only for guidance and do not constitute any part of an offer or contract. Intending purchasers should not rely on them as statements of representation of fact, but must satisfy themselves by inspection or otherwise as to their accuracy. No person in this firm's employment has the authority to make or give any representation or warranty in respect of the property.